

PC TABLE LAMP

PRODUCT FACT SHEET



PC TABLE LAMP

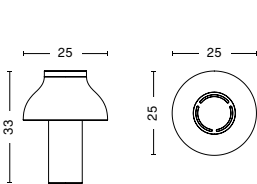
DESIGN BY PIERRE CHARPIN, 2019

Pierre Charpin's PC Table Lamps is a collection of refined freestanding tabletop lamps. The lamps are constructed in anodised aluminium, which makes the surface more resistant to corrosion. The light source is hidden from view by a removable polycarbonate moulded diffuser, creating both a soft directional downlight effect and determining the form of the lamp itself. The PC Table Lamps are available in a variety of sizes and colours, and are suitable for both contract and domestic markets.

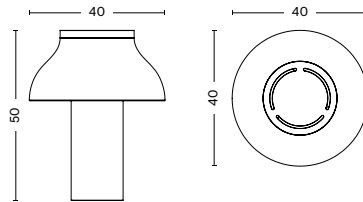
HIGHLIGHTS

- Part of a progressive and technologically advanced lighting collection.
- A family of refined pendants, task lights, table and portable lamps.
- CE approved.
- Designed for use with a replaceable standard retro fit LED dimmable bulb.
- Touch step dimmer.
- Table lamp suitable for both private and office environments.
- Qualified for contract use.

DIMENSIONS



SMALL
WIDTH 25 CM
DEPTH 25 CM
HEIGHT 33 CM



LARGE
WIDTH 40 CM
DEPTH 40 CM
HEIGHT 50 CM

MATERIALS

SHADE
Anodised spun aluminium shade.

BASE
Anodised extruded aluminium base with a cast iron internal weight.

DIFFUSER
Injection moulded translucent polycarbonate diffuser.

CABLE
Braided textile cable with PVC insulation. Please note that the cable is black for all colour options.

OPTIONS

Incl. UK Plug converter.

COLOUR & FINISH

Please note that the colour codes are indicative.



SOFT BLACK



ALUMINIUM
ANODISED

PC TABLE LAMP SMALL

TECHNICAL SPECIFICATIONS

RECOMMENDED LIGHT SOURCE*	DIMMABLE	POWER SUPPLY	IP	CORD LENGTH	SWITCH
LED E27 (A19.), 10-13W (max. 13W), 1000-1500lm, 2700-3000K warm white	Yes	220-240V AC at 50/60Hz EU plug mounted	20	200 cm	Touch step dimmer (Integrated in the entire base)

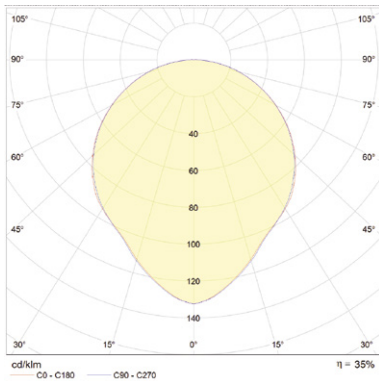
*Bulb not included. Globe style bulb is not recommended.

TEST SPECIFICATION OUTPUTS*

FLUX (LUMENS)	CCT (KELVIN)	CRI (1-100)
360lm	2700K warm white	80

*Photometrics and the test specification shown is taken using the recommended LED bulb fitted in the production luminaire.

PHOTOMETRICS



CERTIFICATES

CE APPROVED

This product has been assessed and complies with the essential requirements of the relevant European directives.



Tested according to the following European EN IEC standards which relate specifically to electrical lighting products including:

- EN 55015:2013 (radio disturbance)
- EN 61547:2009 (EMC immunity)
- EN 61000-3-2:2014 (EMC compatibility)
- EN 61000-3-3:2013 (EMC compatibility)
- EN 60598-2-4:1997 (portable luminaires)
- EN 60598-1:2015 (general requirements)
- EN 62493:2010 (human exposure to EMC)

COUNTRY OF ORIGIN

China

DOWNLOADS

Packshots and lifestyle photos, 2D / 3D files, care and maintenance, instructions, test certificates, product fact sheets, and product presentations are available in our Digital Library at hay.com.

[LINK TO DIGITAL LIBRARY](#)

PC TABLE LAMP LARGE

TECHNICAL SPECIFICATIONS

RECOMMENDED LIGHT SOURCE*	DIMMABLE	POWER SUPPLY	IP	CORD LENGTH	SWITCH
LED E27 (A19), 10-13W (max. 13W), 1000-1500lm, 2700-3000K warm white	Yes	220-240V AC at 50/60Hz EU plug mounted	20	200 cm	Touch step dimmer (Integrated in the entire base)

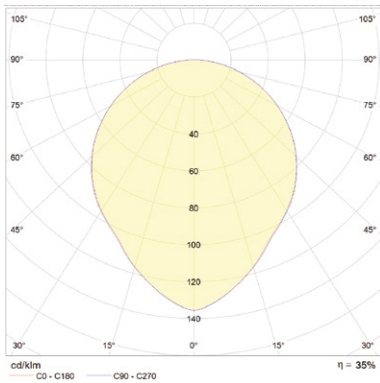
*Bulb not included. Globe style bulb is not recommended.

TEST SPECIFICATION OUTPUTS*

FLUX (LUMENS)	CCT (KELVIN)	CRI (1-100)
550lm	2700K warm white	80

*Photometrics and the test specification shown is taken using the recommended LED bulb fitted in the production luminaire.

PHOTOMETRICS



CERTIFICATES

CE APPROVED

This product has been assessed and complies with the essential requirements of the relevant European directives.



Tested according to the following European EN IEC standards which relate specifically to electrical lighting products including:

- EN 55015:2013 (radio disturbance)
- EN 61547:2009 (EMC immunity)
- EN 61000-3-2:2014 (EMC compatibility)
- EN 61000-3-3:2013 (EMC compatibility)
- EN 60598-2-4:1997 (portable luminaires)
- EN 60598-1:2015 (general requirements)
- EN 62493:2010 (human exposure to EMC)

COUNTRY OF ORIGIN

China

DOWNLOADS

Packshots and lifestyle photos, 2D / 3D files, care and maintenance, instructions, test certificates, product fact sheets, and product presentations are available in our Digital Library at hay.com.

[LINK TO DIGITAL LIBRARY](#)