

TEXTILES

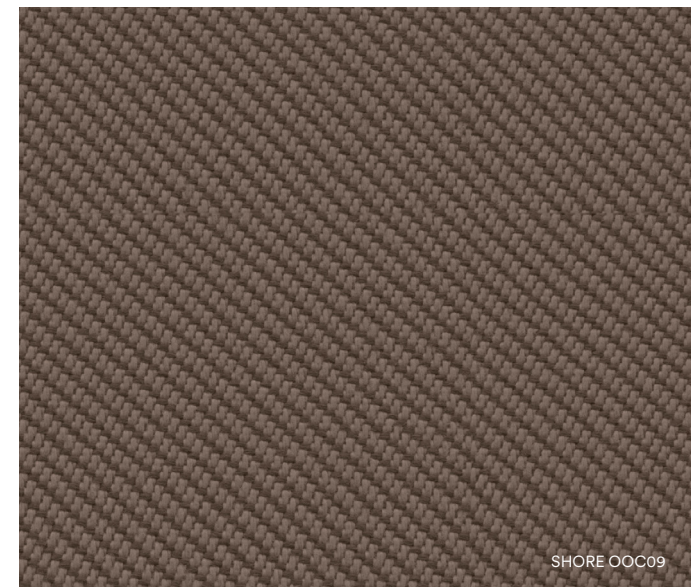


We have carefully curated our selection of textiles from some of the best suppliers on the market who operate to the highest environmental standards.



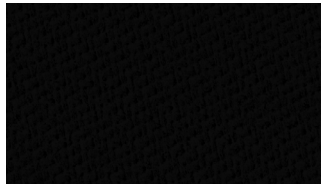
OCEANIC

A strikingly contemporary fabric with an intricate twill weave. Oceanic is made entirely from recycled plastic removed from the sea and shores.

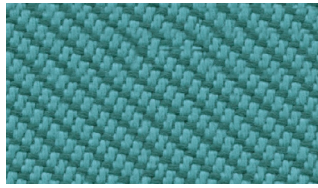


Manufacturer	Camira
Price Group	1
Composition	100% post-consumer recycled polyester, including 50% SEAQUAL yarn
Environment	Certified to OEKO-TEX® Standard 100 Certified to Indoor Advantage™ Gold Made from 100% post-consumer recycled polyester Nonmetallic dyestuffs
Abrasion resistance	Heavy duty / 10 year guarantee Independently certified to ≥100.000 Martindale cycles
Weight	497g/m2 ±5% (696g/lin.m ±5%)
Fastness to rubbing	Wet: 4, Dry: 4 (ISO 105 - X12)
Lightfastness	5 (ISO 105 - B02) OOC16: 4/5 (ISO 105 - B02)
Flammability	EN 1021 - 1 (cigarette) EN 1021 - 2 (match) BS 7176 Low Hazard Note: Flammability performance is dependent on components used. Our certificates show what substrates have been used in our tests. For composite tests customers must ensure their complete furniture meets the necessary standards.

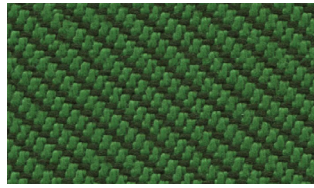
Textiles Oceanic



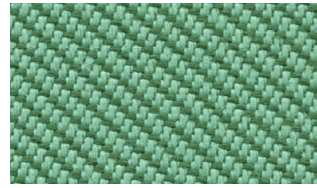
FLOTSAM OOC01



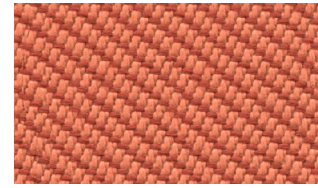
JETSAM OOC02



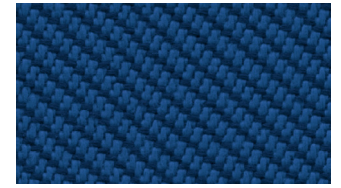
COAST OOC03



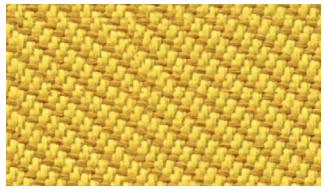
SEA OOC04



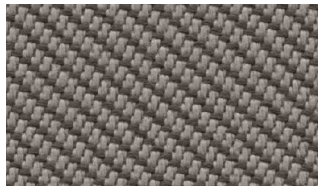
CORAL OOC05



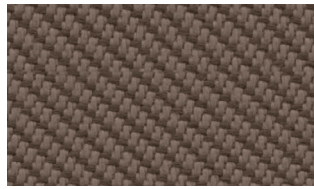
ATOLL OOC06



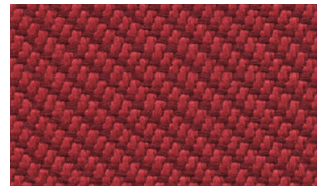
BARRIER OOC07



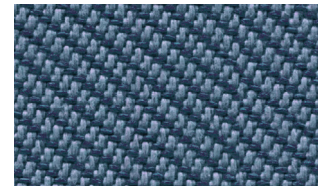
BAY OOC08



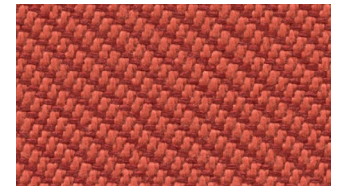
SHORE OOC09



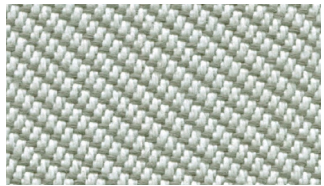
ABYSS OOC10



NEPTUNE OOC11



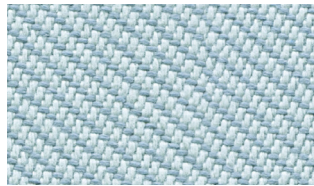
AQUATIC OOC12



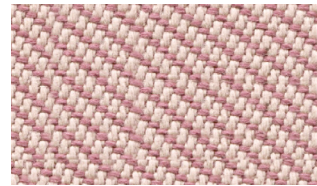
PADDLE OOC13



RIPTIDE OOC14



GULF OOC15



SEAFARER OOC16

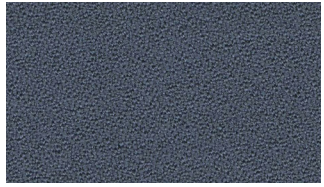
AQUARIUS

A versatile crêpe weave fabric that is suitable for task chairs and lounge seating. Made from 100% natural wool, which is not only rapidly renewable but also fully biodegradable.

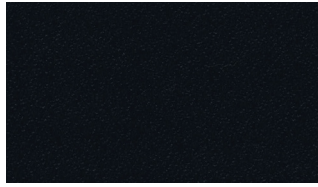


Manufacturer	Camira
Price Group	1
Composition	100% virgin wool
Environment	Certified to Indoor Advantage™ "Gold" Rapidly renewable and compostable Nonmetallic dyestuffs
Abrasion resistance	Heavy duty / 10 year guarantee. Independently certified to ≥50.000 Martindale cycles
Weight	370 g/m2 ±5%
Fastness to rubbing	Wet: 4, Dry: 4 (ISO 105 - X12)
Lightfastness	5 (ISO 105 - B02)
Flammability	EN 1021-1&2 Cigarette & Match BS 7176 Low Hazard UNI 9175 Classe 1 IM BS 5852 Ignition Source 5 when FR treated BS 7176 Medium Hazard when FR treated BS 5867-2 Type B Curtains & Drapes when FR treated

Textiles Aquarius



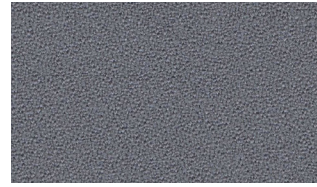
HERON JA001



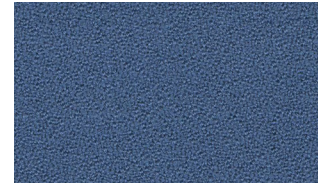
PITCH JA002



MARINER JA016



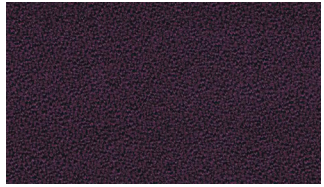
RHINO JA022



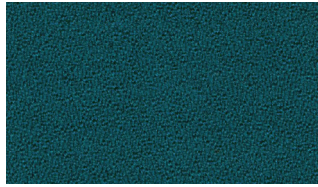
PORCELAIN JA024



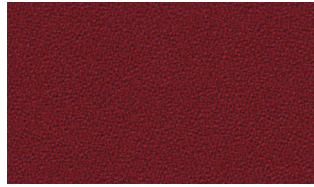
JEZEBEL JA027



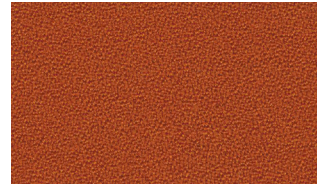
PADERBORN JA047



BISCAY JA059



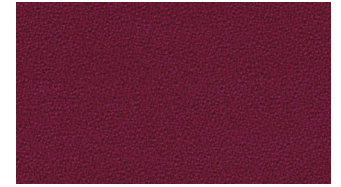
VERMILLION JA062



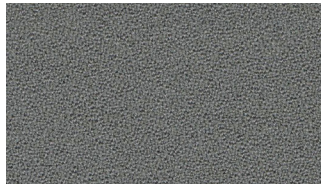
AMBER JA068



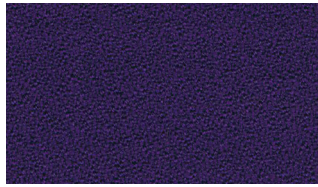
SWART JA069



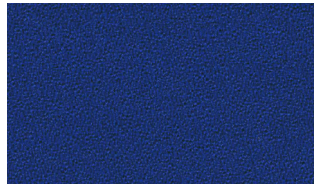
POISON JA084



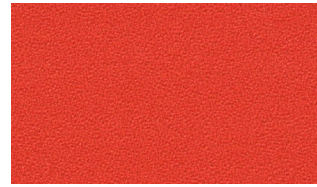
MUSHROOM JA125



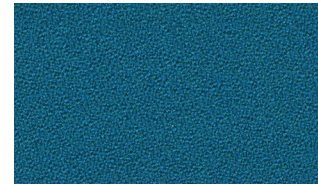
PURPLE JA157



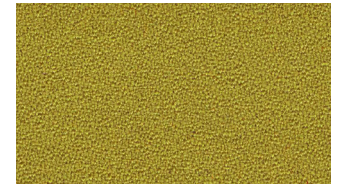
SMURF JA159



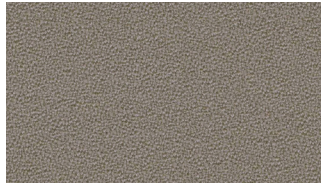
TAMBOURINE JA183



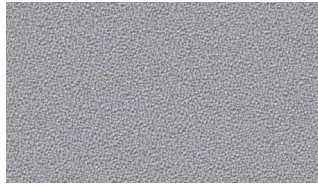
MANTA JA194



COURGETTE JA201



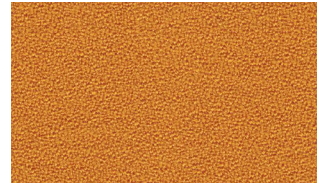
CERES JA409



ARISTOTLE JA416



CHERRY JA419



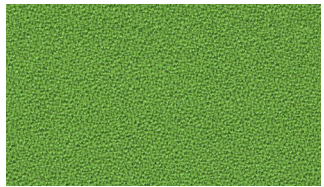
ZIPPY JA426



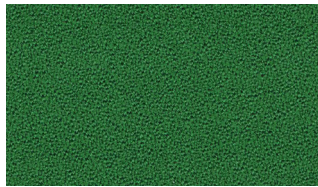
CIRCUS JA428



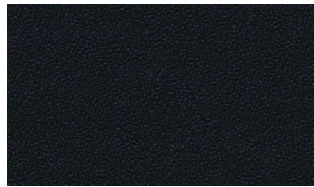
VICO JA435



TOMBOLA JA442



CHOMSKY JA443



SPINOZA JA448

REMIX 3

Remix 3 is an elegant upholstery textile distinguished by exceptional depth of colour, designed by Giulio Ridolfo.

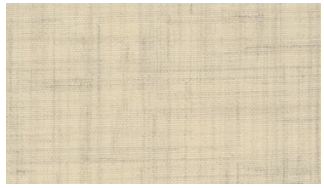
Remix 3 looks unicoloured from a distance but reveals subtle details and colour contrasts when viewed close-up. The textile features a tight, minimalistic weave, and derives its lively colour play from a combination of two different mélange yarns, which each combine up to three hues.



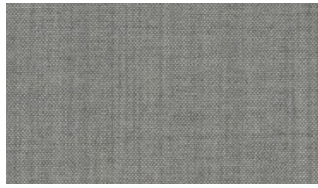
REMIX 3, 0412

Category	Kvadrat upholstery
Price Group	2
Pattern	Solid
Composition	90% new wool worsted, 10% nylon
Width	Approx. 140 cm (Approx. 55")
Weight	420 g/lin. m (13.55 oz/ly)
Repeat	Approx. 0/0 cm (Approx. 0"/0")
Durability	100,000 Martindale
Pilling	4 (ISO 1-5)
Lightfastness	6
Fire Tests	AS/NZS 1530.3 • BS 5852 crib 5 with treatment • BS 5852 part 1 • IMO FTP Code 2010 Part 7 with treatment • IMO FTP Code 2010 Part 8 • NF D 60 013 • NFPA 260 • SN 198 898 5.3 with treatment • UNI 9175 1IM • US Cal. Bull. 117-2013 • EN 1021-1/2 • AS/NZS 3837 class 2 • ÖNORM B1/Q1 • ASTM E84 Class A Unadhered • ASTM E84 Class A Adhered • GB 50222 B1 with treatment (Chinese)
Fastness to rubbing	4 (Dry) 4 (Wet)
Airflow	465 Pa s/m
Absorption	0.55/Class D (Absorption flat) 0.80/Class B (Absorption folded))
Seam Slippage	5 mm (warp), 3 mm (weft)

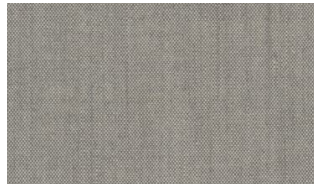
Textiles Remix 3



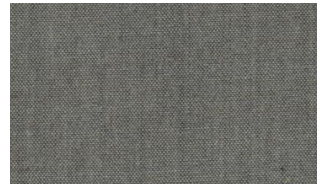
REMIX 3 0113



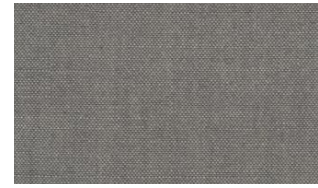
REMIX 3 0123



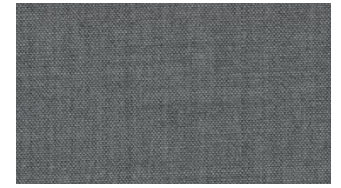
REMIX 3 0126



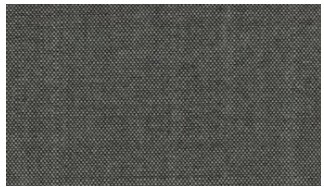
REMIX 3 0133



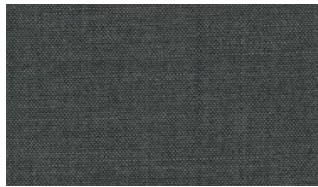
REMIX 3 0136



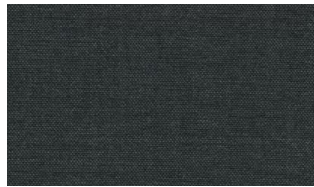
REMIX 3 0143



REMIX 3 0152



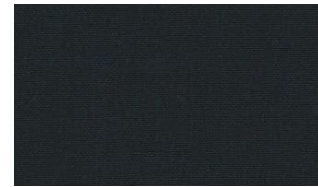
REMIX 3 0163



REMIX 3 0173



REMIX 3 0183



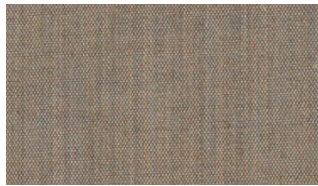
REMIX 3 0196



REMIX 3 0223



REMIX 3 0233



REMIX 3 0242



REMIX 3 0252



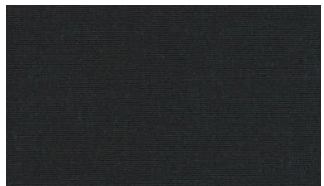
REMIX 3 0266



REMIX 3 0276



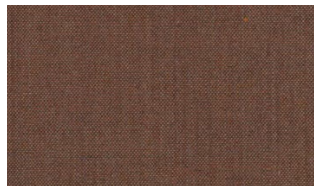
REMIX 3 0286



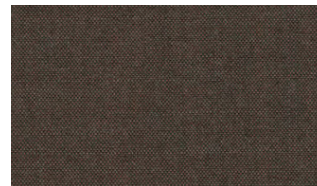
REMIX 3 0296



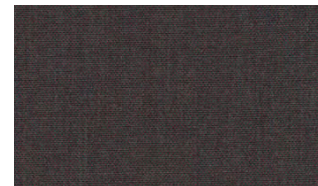
REMIX 3 0326



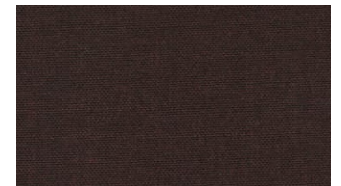
REMIX 3 0346



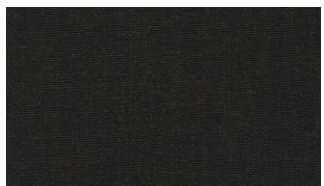
REMIX 3 0356



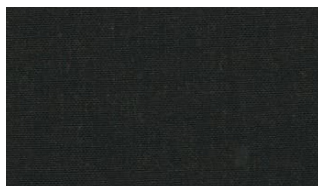
REMIX 3 0362



REMIX 3 0373



REMIX 3 0383



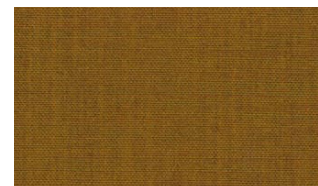
REMIX 3 0393



REMIX 3 0406



REMIX 3 0412



REMIX 3 0422



REMIX 3 0433

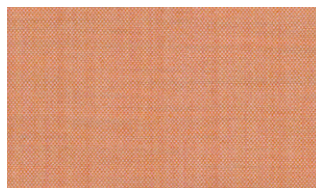
Textiles Remix 3



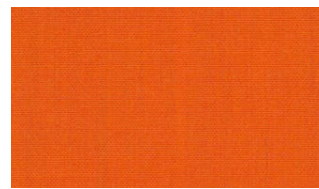
REMIX 3 0443



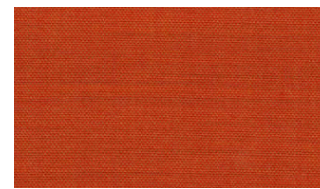
REMIX 3 0452



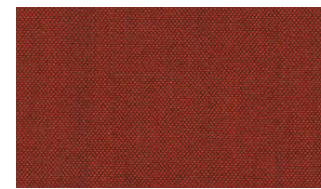
REMIX 3 0516



REMIX 3 0536



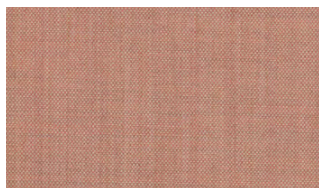
REMIX 3 0543



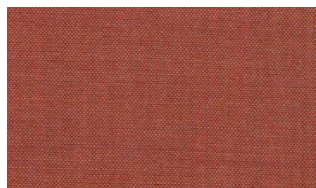
REMIX 3 0566



REMIX 3 0606



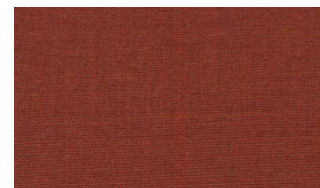
REMIX 3 0612



REMIX 3 0632



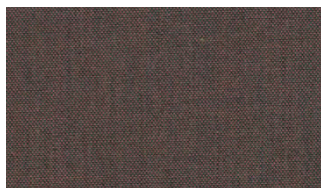
REMIX 3 0643



REMIX 3 0653



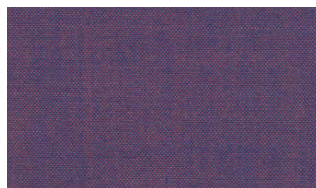
REMIX 3 0662



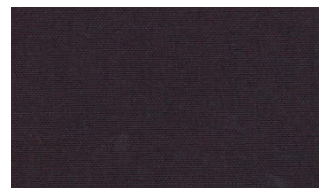
REMIX 3 0672



REMIX 3 0682



REMIX 3 0686



REMIX 3 0692



REMIX 3 0716



REMIX 3 0722



REMIX 3 0733



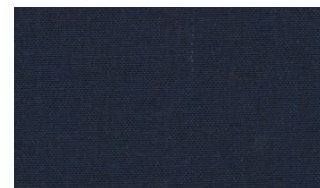
REMIX 3 0743



REMIX 3 0753



REMIX 3 0762



REMIX 3 0773



REMIX 3 0783



REMIX 3 0796



REMIX 3 0816



REMIX 3 0823



REMIX 3 0836



REMIX 3 0842



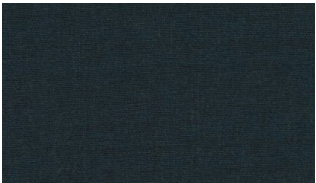
REMIX 3 0852

Textiles Remix 3



REMIX 3

0866



REMIX 3

0873



REMIX 3

0906



REMIX 3

0912



REMIX 3

0923



REMIX 3

0933



REMIX 3

0942



REMIX 3

0954



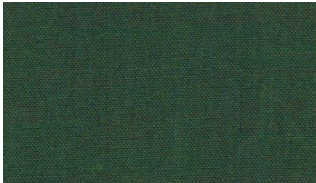
REMIX 3

0962



REMIX 3

0973



REMIX 3

0982



REMIX 3

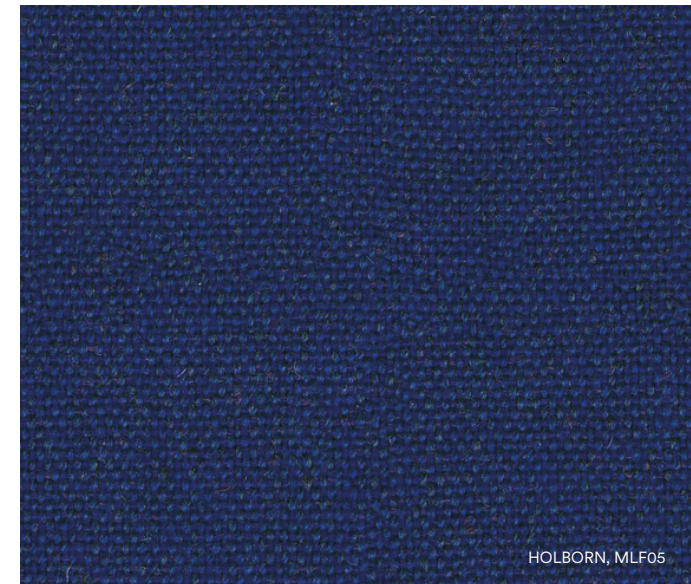
0996



MAIN LINE FLAX

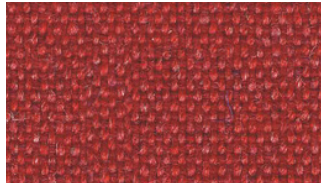
An inherently flame retardant fabric made from sustainable sources and woven into interesting solids and cross-colors inspired by the rich tones of rare jewels.

UPMINSTER, MLF20



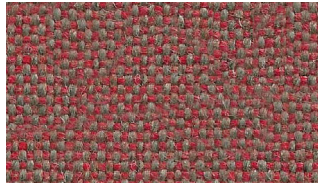
Manufacturer	Camira
Price Group	2
Composition	70% virgin wool, 30% flax
Environment	Certified to the EU Ecolabel Certified to Indoor Advantage™ "Gold" Rapidly renewable and compostable Made from wool and bast fiber
Martindale	Heavy duty / 10 year guarantee Independently certified to ≥50.000 Martindale cycles
Weight	437 g/m2 ±5%
Fastness to rubbing	Wet: 3, Dry: 4 (ISO 105 - X12)
Lightfastness	5 (ISO 105 - B02)
Flammability	EN 1021-1&2 Cigarette & Match BS 7176 Low Hazard BS 5852 Ignition Source 5 BS 7176 Medium Hazard NF D 60-013 ÖNORM B 3825 & A 3800-1 (58kg/m3 CMHR Foam) UNI 9175 Classe 1 IM BS 5867-2: Type B Curtains & Drapes

Textiles Main Line Flax



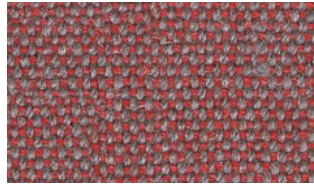
ALDGATE

MLF01



ARCHWAY

MLF02



BARBICAN

MLF03



HOLBORN

MLF05



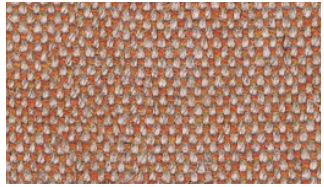
KILBURN

MLF06



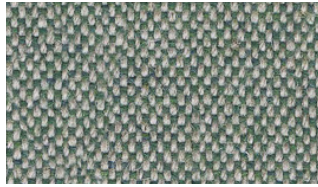
KENSINGTON

MLF07



LAMBETH

MLF08



MONUMENT

MLF09



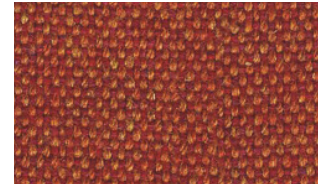
NEWBURY

MLF10



MORDEN

MLF12



LEYTON

MLF13



PARSONS

MLF14



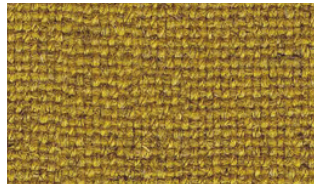
STOCKWELL

MLF15



TEMPLE

MLF16



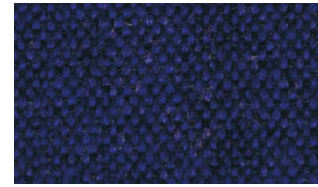
TOOTING

MLF17



TUFNELL

MLF18



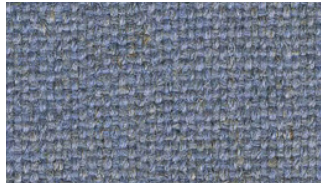
VICTORIA

MLF19



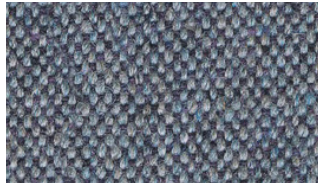
UPMINSTER

MLF20



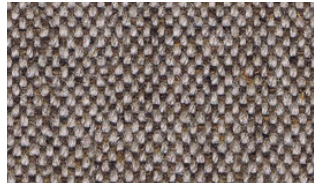
WATERLOO

MLF21



WESTMINSTER

MLF22



BANK

MLF23



BAYSWATER

MLF24



BETHNAL

MLF25



CAMDEN

MLF26



EDGWARE

MLF28



FARRINGDON

MLF29



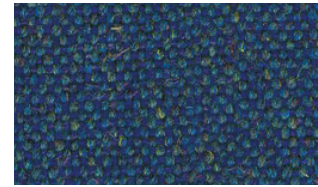
GOLDHAWK

MLF31



GREENFORD

MLF32



PIMLICO

MLF34



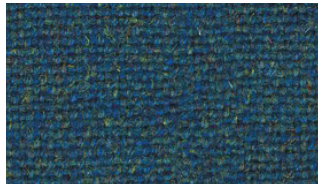
BROMPTON

MLF35

Textiles Main Line Flax



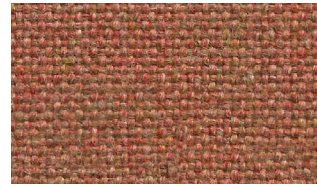
TOWER MLF36



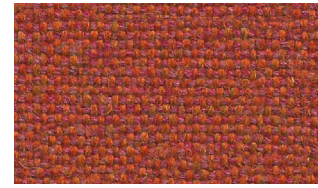
STANMORE MLF37



NORTHFIELDS MLF40



ALPERTON MLF43



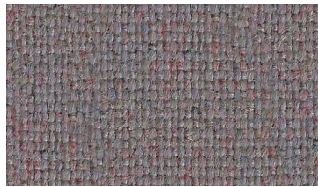
BALHAM MLF44



BARKING MLF45



BLACKWALL MLF46



BRIXTON MLF47



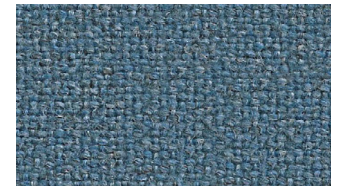
CHIGWELL MLF48



CLAPHAM MLF49



EMBANKMENT MLF50



EPPING MLF51



GREENWICH MLF52



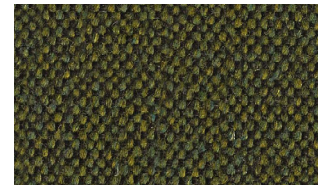
HAMPSTEAD MLF53



HARROW MLF54



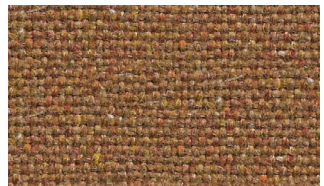
HORNCHURCH MLF55



KENTISH MLF56



MOORGATE MLF57



PERIVALE MLF59



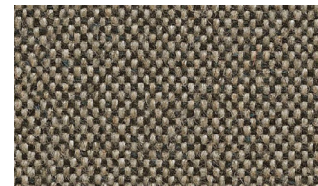
PINNER MLF60



REDBRIDGE MLF61



RICHMOND MLF62



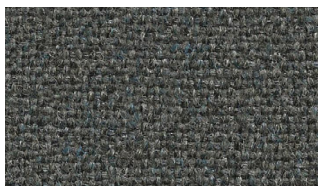
SHADWELL MLF63



STRATFORD MLF64



WATFORD MLF65



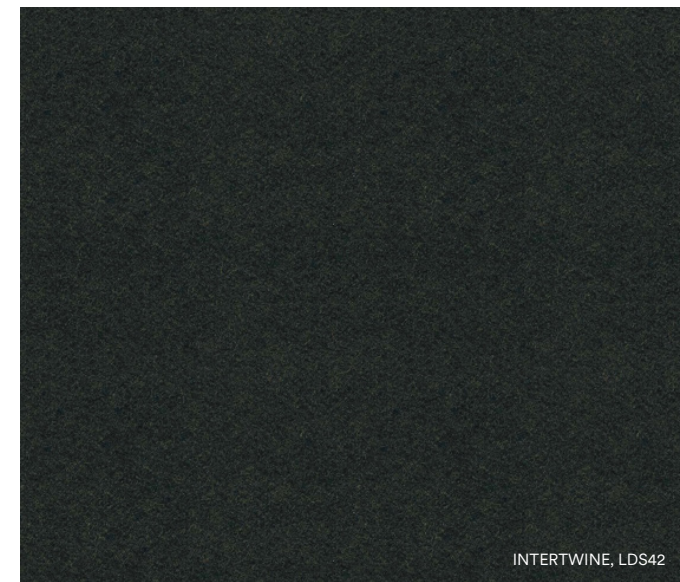
WHITECHAPEL MLF66



WOODFORD MLF67

SYNERGY

A soft handle wool blend fabric featuring exquisite fiber dyed shades and sumptuous piece dyed solids.



INTERTWINE, LDS42

Manufacturer	Camira
Price Group	2
Composition	95% virgin wool, 5% polyamide
Environment	Certified to the EU Ecolabel Certified to Indoor Advantage™ "Gold"
Abrasion resistance	Heavy duty / 10 year guarantee Independently certified to ≥ 100.000 Martindale cycles
Weight	400 g/m ² $\pm 5\%$
Fastness to rubbing	Wet: 3, Dry: 4 (ISO 105 - X12)
Lightfastness	5 (ISO 105 - B02)
Flammability	EN 1021 - 1&2 Cigarette & Match BS 7176 Low Hazard NF D 60-013 ÖNORM B 3825 & A 3800-1 (58 kg/m ³ CMHR Foam) UNI 9175 Classe 1 IM EN 13501-1 Adhered Class D, s1, d0 EN 13501-1 Un-adhered Class E, s2, d0 BS 5852 Ignition Source 5 when FR treated BS 7176 Medium Hazard when FR treated EN 13501-1 Adhered Class B, s1, d0 when FR treated EN 13501-1 Un-adhered Class D, s2, d0 when FR treated BS 5867-2: Type B Curtains & Drapes when FR treated

Textiles Synergy



VENTURE LDS05



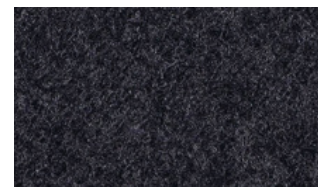
FATE LDS07



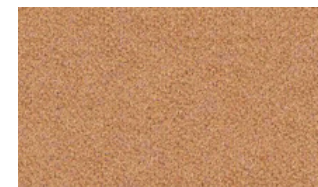
SERENDIPITY LDS08



PARTNER LDS16



MIX LDS17



LOOP LDS18



CHAIN LDS19



LEVEL LDS20



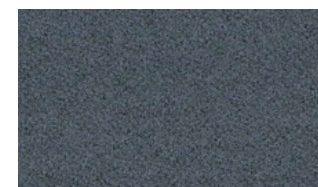
TEAM LDS21



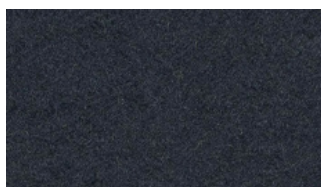
FRAME LDS22



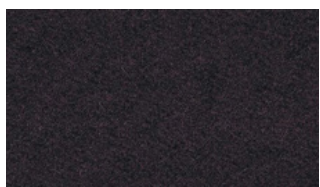
BRACKET LDS23



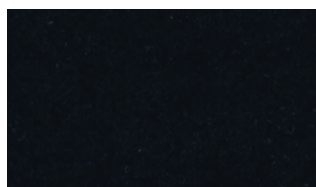
BOND LDS24



COMPOUND LDS25



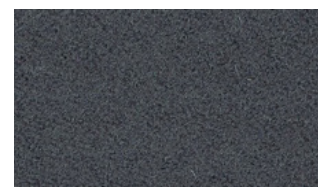
BRIDGE LDS26



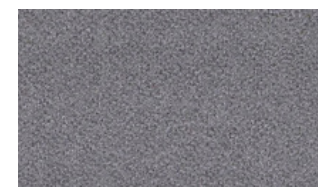
SEEK LDS27



LATERAL LDS28



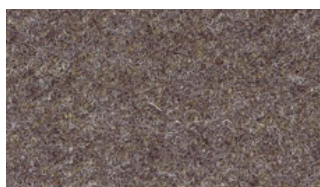
HOOK LDS29



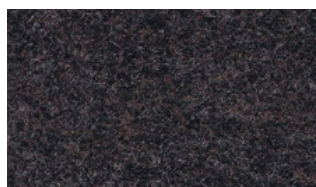
PAIR LDS31



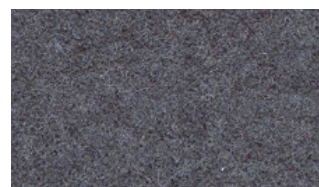
AFFIX LDS32



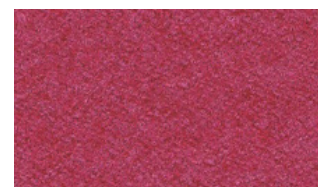
TAG LDS33



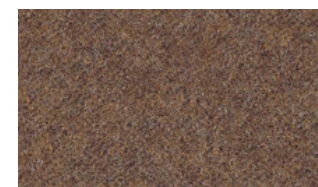
WED LDS34



CHEMISTRY LDS35



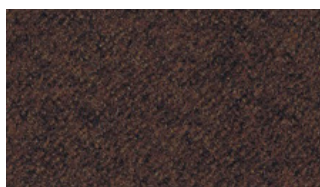
MEDLEY LDS36



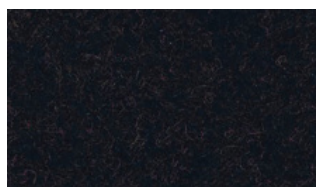
LINEA LDS37



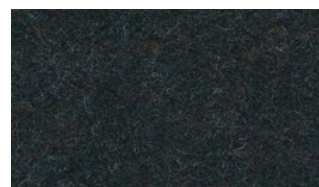
UNITY LDS38



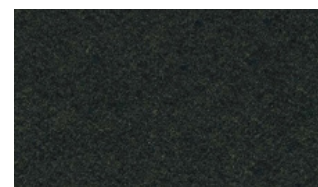
COLLECTIVE LDS39



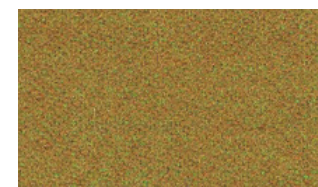
CO-OPERATE LDS40



COUPLE LDS41



INTERTWINE LDS42



MARRY LDS43

Textiles Synergy



RELATE LDS44



SUMMON LDS45



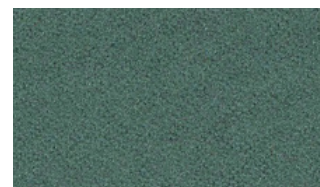
GATHER LDS46



INTEGRATE LDS47



INTERFUSE LDS48



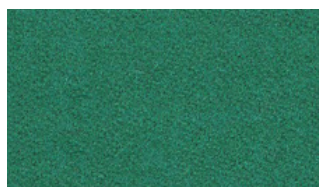
APPEND LDS49



LEAGUE LDS50



KINDNESS LDS51



COMPLY LDS52



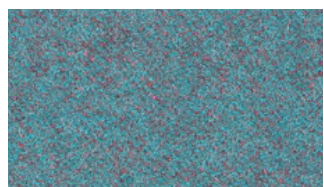
PACT LDS53



REGARD LDS54



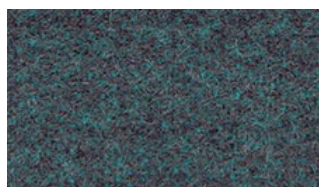
SUPPORT LDS55



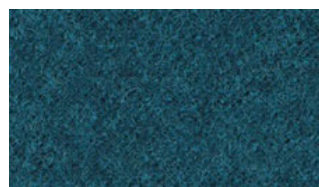
KINSHIP LDS56



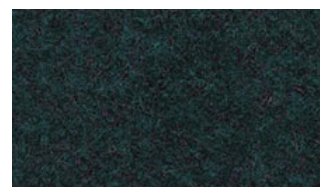
ENGAGE LDS57



FAMILY LDS58



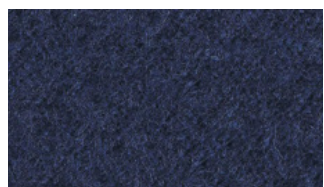
GROUP LDS59



ACCORD LDS60



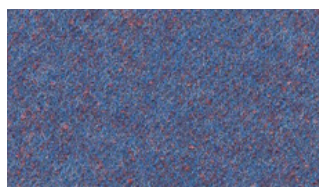
ASSEMBLE LDS61



ALIKE LDS62



GUILD LDS63



ORDER LDS64



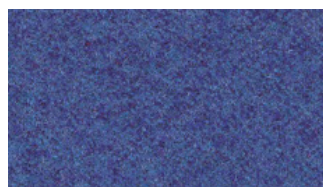
HUDDLE LDS65



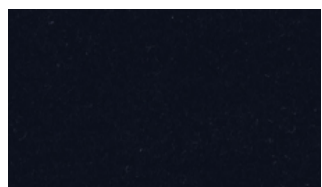
FELLOWSHIP LDS66



WARMTH LDS67



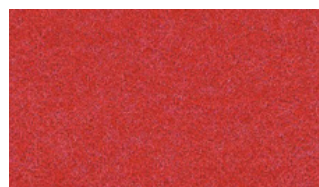
COLLABORATE LDS68



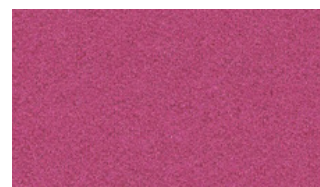
SYNC LDS69



TOGETHER LDS70



OPEN LDS71



COMPOSE LDS72



WORK LDS73

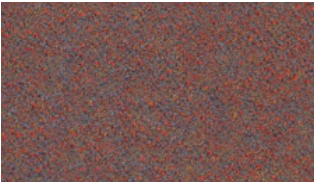
Textiles Synergy



AFFINITY LDS74



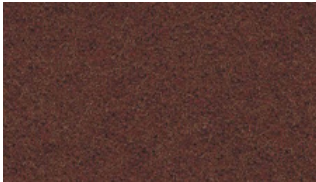
CONTRIBUTION LDS75



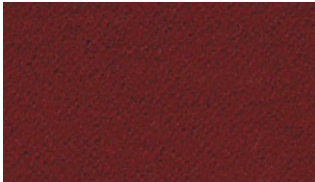
SUCCESS LDS76



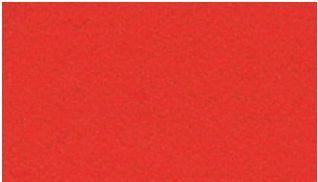
COMBO LDS77



CORDIAL LDS78



AMIABLE LDS79



APT LDS80



SIMILAR LDS81



LIKENESS LDS82



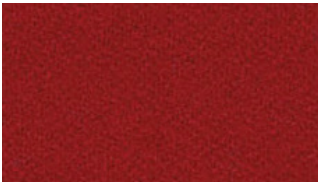
CONGREGATE LDS83



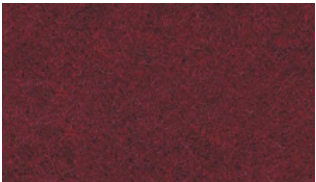
MUTUAL LDS84



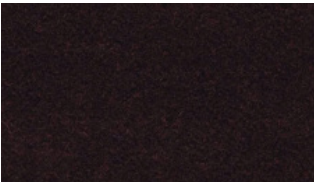
SHARE LDS85



GLOBAL LDS86



VALUES LDS87

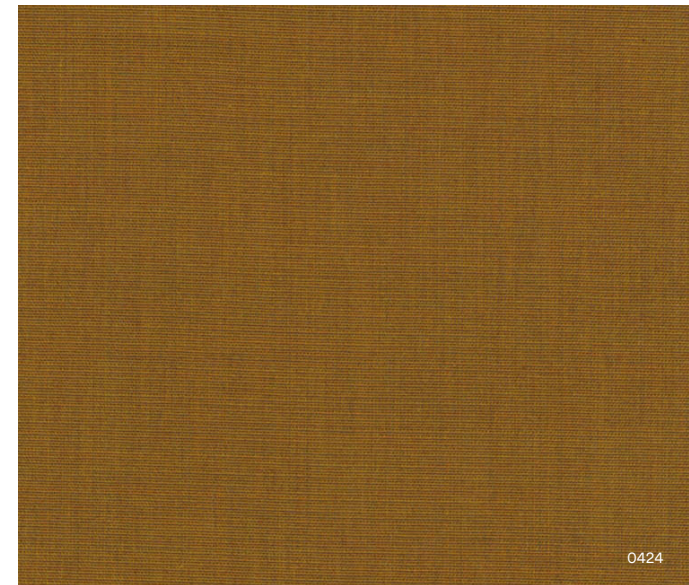


PROCESS LDS88



CANVAS 2

Canvas is a vibrant woollen upholstery textile created by Giulio Ridolfo.

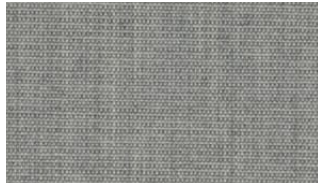


Category	Kvadrat upholstery
Price Group	3
Pattern	Solid
Composition	90% new wool worsted, 10% nylon
Width	Approx. 140 cm (Approx. 55")
Weight	480 g/lin. m (15.48 oz/ly)
Repeat	Approx. 0/0 cm (Approx. 0"/0")
Durability	100,000 Martindale
Pilling	4 (ISO 1-5)
Lightfastness	5-6
Fire Tests	AS/NZS 1530.3 • BS 5852 crib 5 with treatment • BS 5852 part 1 • IMO FTP Code 2010 Part 8 • NF D 60 013 • NFPA 260 • SN 198 898 5.3 with treatment • UNI 9175 1IM • US Cal. Bull. 117-2013 • EN 1021-1/2 • ÖNORM B1/Q1 • ASTM E84 Class A Adhered • ASTM E84 Class A Unadhered
Fastness to rubbing	4-5 (Dry) 4-5 (Wet)
Airflow	849 Pa s/m
Absorption	0.60/Class C (Absorption flat) 0.80/Class B (Absorption folded)
Seam Slippage	3.5 mm (warp), 2 mm (weft)

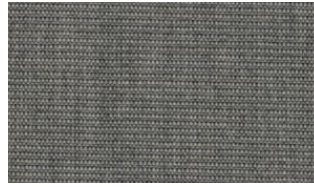
Textiles Canvas 2



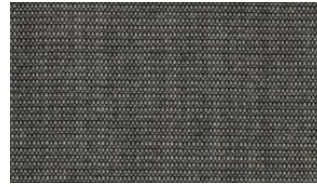
CANVAS 2 0114



CANVAS 2 0124



CANVAS 2 0134



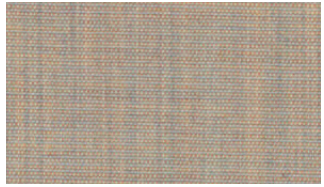
CANVAS 2 0154



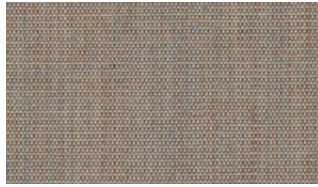
CANVAS 2 0174



CANVAS 2 0216



CANVAS 2 0224



CANVAS 2 0244



CANVAS 2 0254



CANVAS 2 0264



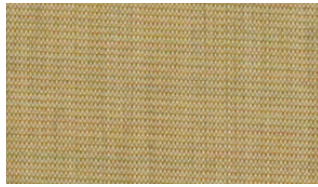
CANVAS 2 0356



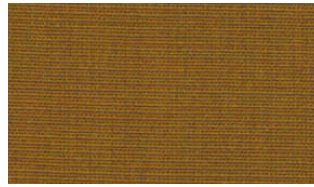
CANVAS 2 0364



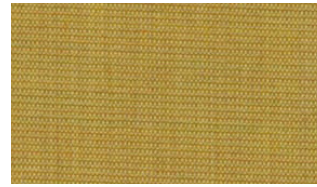
CANVAS 2 0374



CANVAS 2 0414



CANVAS 2 0424



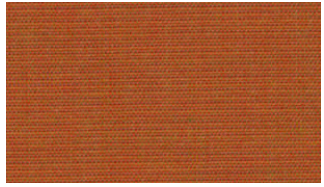
CANVAS 2 0446



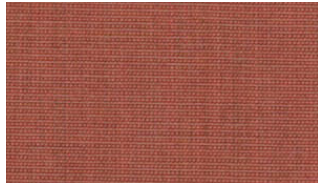
CANVAS 2 0454



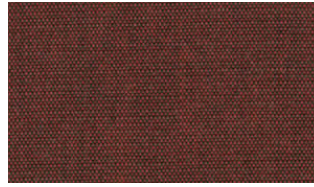
CANVAS 2 0546



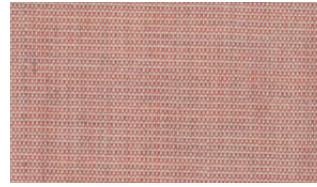
CANVAS 2 0556



CANVAS 2 0566



CANVAS 2 0576



CANVAS 2 0614



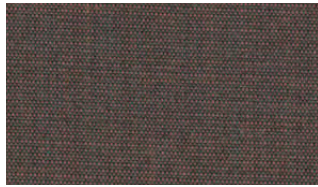
CANVAS 2 0644



CANVAS 2 0654



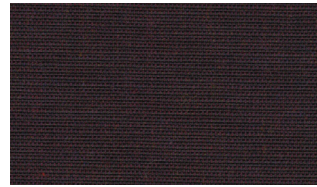
CANVAS 2 0666



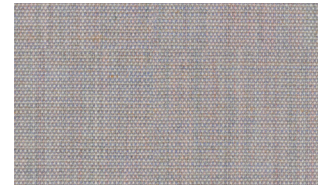
CANVAS 2 0674



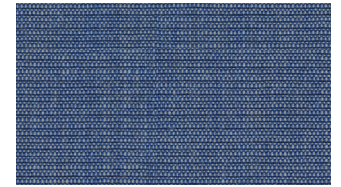
CANVAS 2 0684



CANVAS 2 0694

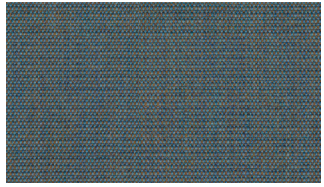


CANVAS 2 0716

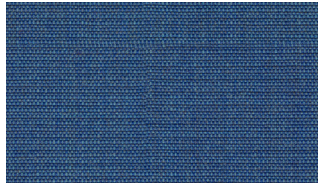


CANVAS 2 0726

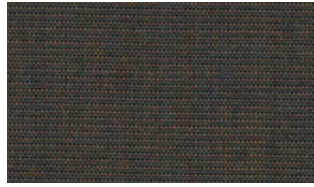
Textiles Canvas 2



CANVAS 2 0734



CANVAS 2 0746



CANVAS 2 0754



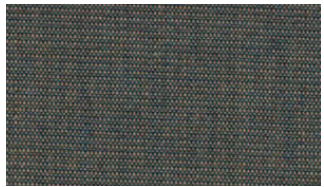
CANVAS 2 0786



CANVAS 2 0794



CANVAS 2 0836



CANVAS 2 0854



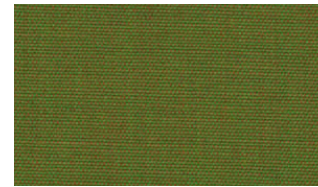
CANVAS 2 0926



CANVAS 2 0936



CANVAS 2 0946



CANVAS 2 0954



CANVAS 2 0964



CANVAS 2 0974



CANVAS 2 0984



CANVAS 2 0996



Swell Modular Sofa in Hallingdal 65, 0110

YOREDALE

A highly textured textile with undulations reflective of its Yorkshire roots, its fascinating bouclé style yarn features a contrasting black binder that brings depth to its saturated tones.



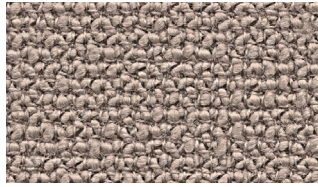
GRASSINGTON, UDA27

Manufacturer	Camira
Price Group	3
Composition	95% wool, 3% polyester, 2% polyamide
Environment	Certified to Indoor Advantage™ "Gold" Nonmetallic dyestuffs
Abrasion resistance	Heavy duty / 10 year guarantee. Independently certified to ≥ 50.000 Martindale cycles
Weight	700 g/m ² $\pm 5\%$
Fastness to rubbing	Wet: 4, Dry: 4 (ISO 105 - X12)
Lightfastness	5 (ISO 105 - B02)
Flammability	EN 1021 - 1&2 Cigarette & Match BS 7176 Low Hazard ÖNORM B 3825 & A 3800-1 (58kg/m ³ CMHR Foam) UNI 9175 Classe 1 IM BS 5852 Ignition Source 5 when FR treated BS 7176 Medium Hazard when FR treated

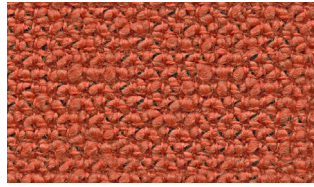
Textiles Yoredale



BUCKDEN UDA01



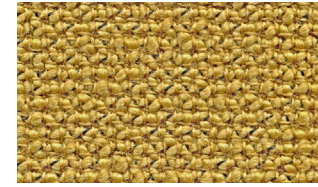
KIDSTONE UDA02



ASKRIGG UDA03



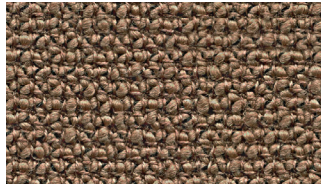
HARDRAW UDA04



SIMONSTONE UDA05



THORALBY UDA06



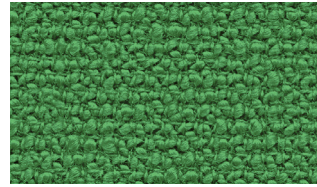
CARPERBY UDA07



GAYLE UDA08



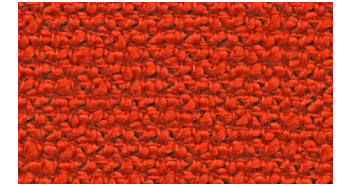
THORNTON UDA09



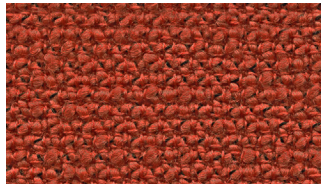
CRAY UDA10



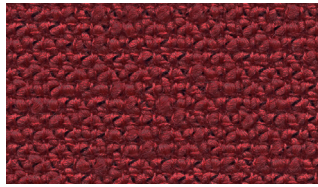
FOSSDALE UDA11



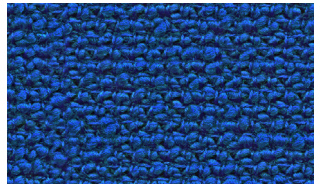
WOODALE UDA12



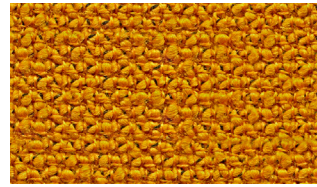
WALDEN UDA13



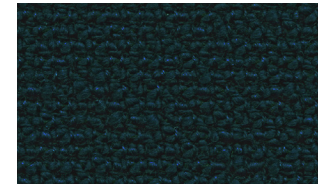
SEDBUSK UDA14



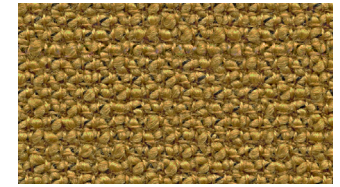
LITTON UDA15



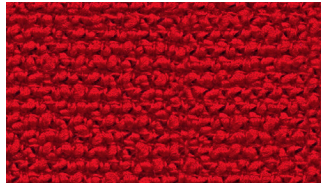
NIDD UDA16



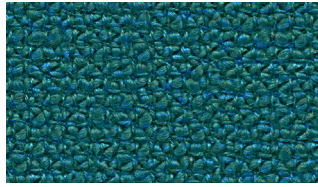
RIBBLE UDA17



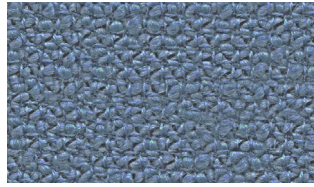
WHARFE UDA18



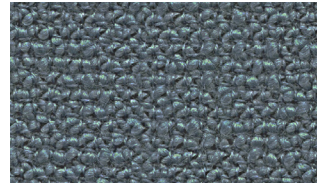
RIPLEY UDA19



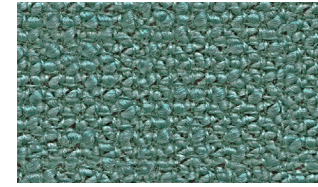
DARLEY UDA20



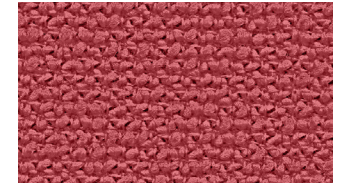
DACRE UDA21



BURNSALL UDA22



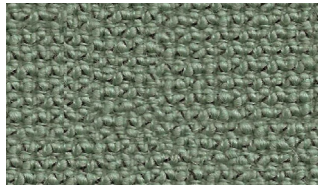
CRACOE UDA23



WODEN UDA24



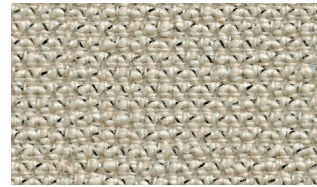
LEYBURN UDA25



GRASSINGTON UDA27



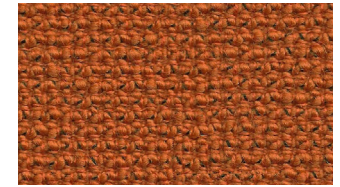
BRONTE UDA28



GORDALE UDA29

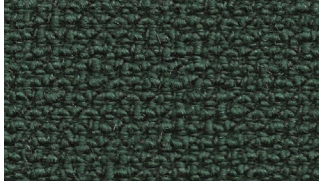


HORTON UDA30



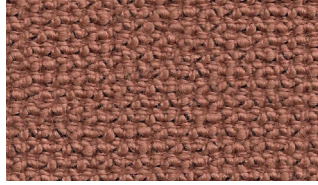
ILKLEY UDA31

Textiles Yoredale



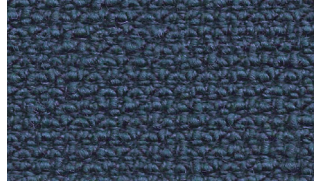
INGLETON

UDA32



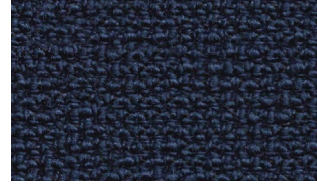
KETTLEWELL

UDA33



MALHAM

UDA34



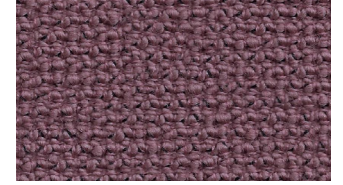
MARSDEN

UDA35



SETTLE

UDA36



SKIPTON

UDA37

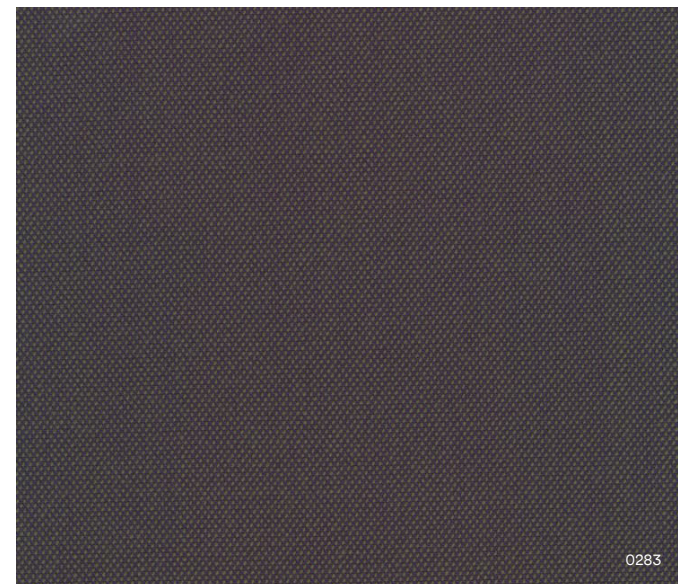


SWALEDALE

UDA38

STEELCUT TRIO 3

The three-dimensional surface of Steelcut Trio resembles small pyramids or steel points. Despite the complexity of the textile's innovative weave, it has a simple, precise expression. Steelcut Trio is yarn-dyed and made from 3 differently coloured yarns.

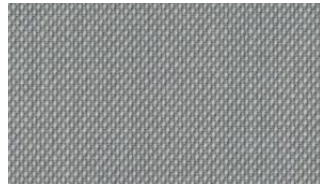


Category	Kvadrat upholstery
Price Group	4
Pattern	Solid
Composition	90% new wool worsted, 10% nylon
Width	Approx. 140 cm (Approx. 55")
Weight	770 g/lin. m (24.84 oz/ly)
Repeat	Approx. 0/0 cm (Approx. 0"/0")
Durability	100,000 Martindale
Pilling	4 (ISO 1-5)
Lightfastness	6-7
Fire Tests	AS/NZS 1530.3 • BS 5852 crib 5 with treatment • BS 5852 part 1 • IMO FTP Code 2010 Part 8 • NF D 60 013 • NFPA 260 • SN 198 898 5.3 with treatment • UNI 9175 11M • US Cal. Bull. 117-2013 • EN 1021-1/2 • ASTM E84 Class B Unadhered • ASTM E84 Class B Adhered • ÖNORM B1/Q1 • AS/NZS 3837 class 2 • GB 50222 B1 with treatment (Chinese)
Fastness to rubbing	4-5 (Dry) 4-5 (Wet)
Airflow	910 Pa s/m
Absorption	0.70/Class C (Absorption flat) 0.95/Class A (Absorption folded)
Seam Slippage	3.5 mm (warp), 2 mm (weft)

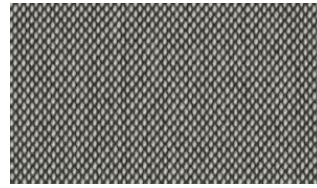
Textiles Steelcut Trio 3



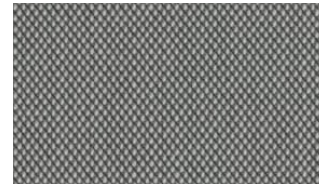
STEELCUT TRIO 3 0105



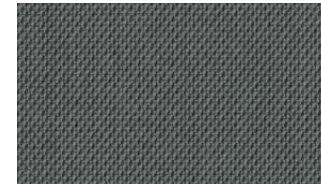
STEELCUT TRIO 3 0113



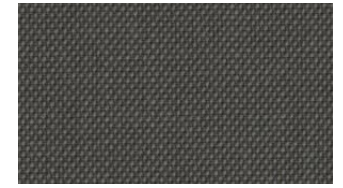
STEELCUT TRIO 3 0124



STEELCUT TRIO 3 0133



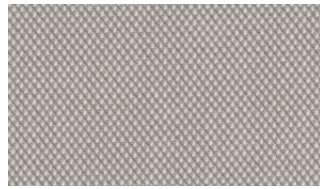
STEELCUT TRIO 3 0153



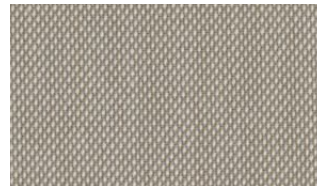
STEELCUT TRIO 3 0176



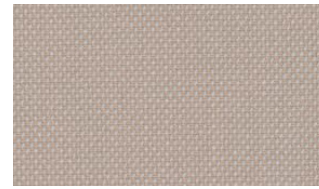
STEELCUT TRIO 3 0195



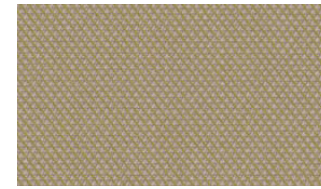
STEELCUT TRIO 3 0205



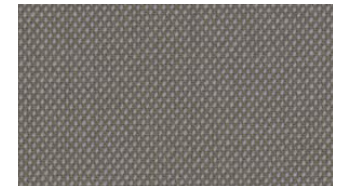
STEELCUT TRIO 3 0213



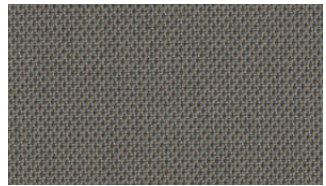
STEELCUT TRIO 3 0226



STEELCUT TRIO 3 0236



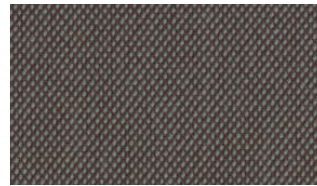
STEELCUT TRIO 3 0246



STEELCUT TRIO 3 0253



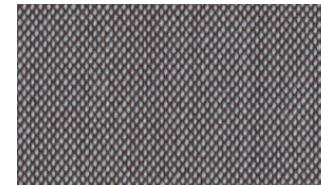
STEELCUT TRIO 3 0266



STEELCUT TRIO 3 0276



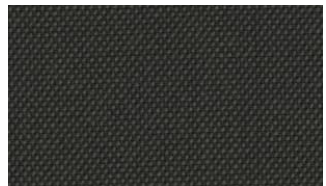
STEELCUT TRIO 3 0283



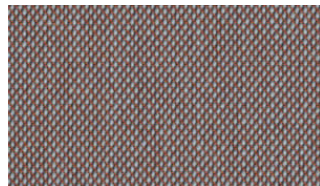
STEELCUT TRIO 3 0336



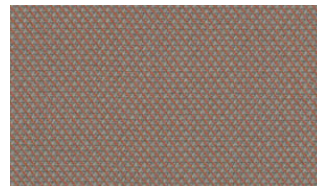
STEELCUT TRIO 3 0376



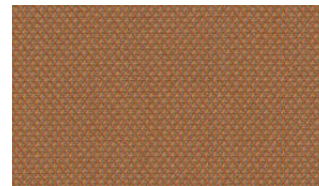
STEELCUT TRIO 3 0383



STEELCUT TRIO 3 0416



STEELCUT TRIO 3 0426



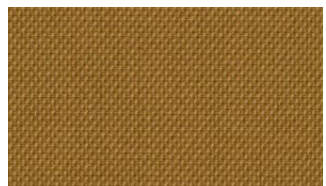
STEELCUT TRIO 3 0436



STEELCUT TRIO 3 0446



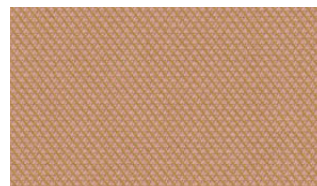
STEELCUT TRIO 3 0453



STEELCUT TRIO 3 0466



STEELCUT TRIO 3 0476



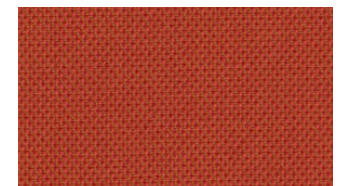
STEELCUT TRIO 3 0506



STEELCUT TRIO 3 0515



STEELCUT TRIO 3 0526



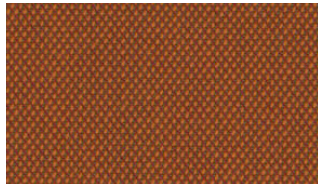
STEELCUT TRIO 3 0533

Textiles Steelcut Trio 3



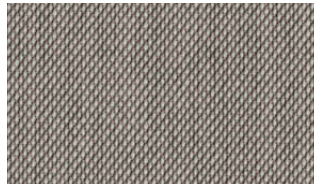
STEELCUT TRIO 3

0553



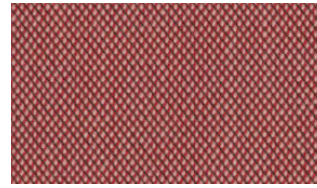
STEELCUT TRIO 3

0576



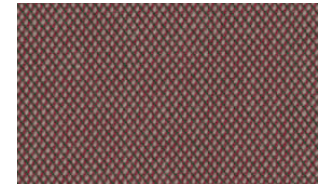
STEELCUT TRIO 3

0616



STEELCUT TRIO 3

0636



STEELCUT TRIO 3

0645



STEELCUT TRIO 3

0666



STEELCUT TRIO 3

0686



STEELCUT TRIO 3

0713



STEELCUT TRIO 3

0716



STEELCUT TRIO 3

0746



STEELCUT TRIO 3

0756



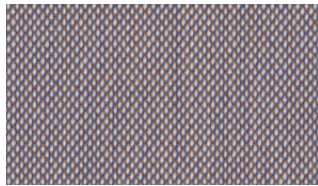
STEELCUT TRIO 3

0776



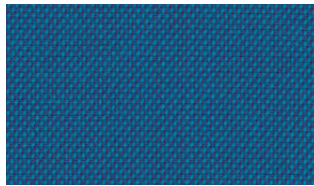
STEELCUT TRIO 3

0796



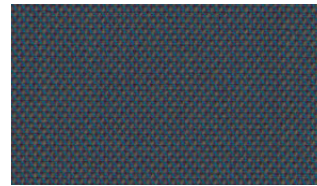
STEELCUT TRIO 3

0806



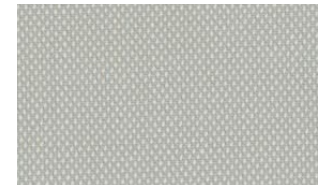
STEELCUT TRIO 3

0865



STEELCUT TRIO 3

0883



STEELCUT TRIO 3

0906



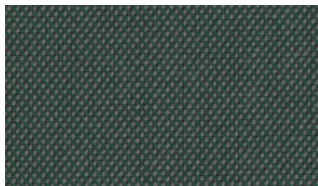
STEELCUT TRIO 3

0916



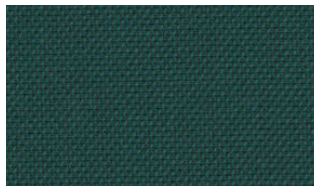
STEELCUT TRIO 3

0946



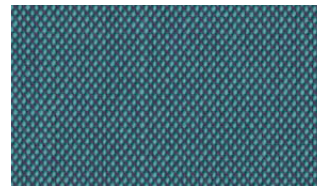
STEELCUT TRIO 3

0966



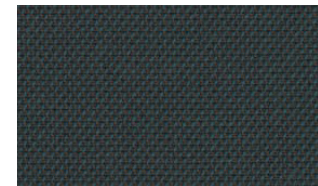
STEELCUT TRIO 3

0976



STEELCUT TRIO 3

0983



STEELCUT TRIO 3

0996



Rope Modular Sofa in Main Line Flax, Upminster MLF20



CITY VELVET

A beautiful lush velvet quality. Each color highlights the shimmering surface of the woven velour and adds a touch of soft decadence.

CA7832, 024



CA7832, 073

Manufacturer	JAB
Price Group	4
Composition	Pile: 100% polyester Groundmaterial: 100% polyester
Abrasion resistance	100.000 Martindale
Weight	440 g/m2
Lightfastness	3-5

Textiles City Velvet



CA7832

010



CA7832

011



CA7832

012



CA7832

013



CA7832

014



CA7832

015



CA7832

020



CA7832

021



CA7832

022



CA7832

023



CA7832

024



CA7832

025



CA7832

026



CA7832

027



CA7832

030



CA7832

031



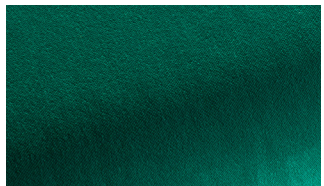
CA7832

032



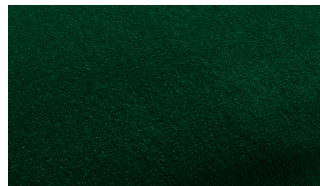
CA7832

033



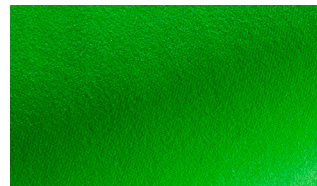
CA7832

034



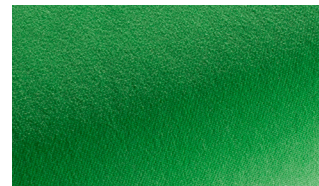
CA7832

035



CA7832

036



CA7832

037



CA7832

038



CA7832

039



CA7832

040



CA7832

041



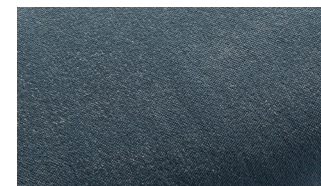
CA7832

042



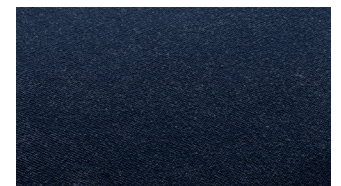
CA7832

043



CA7832

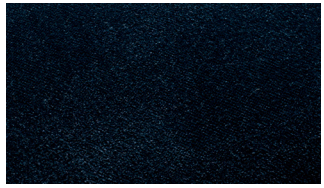
050



CA7832

051

Textiles City Velvet



CA7832 052



CA7832 053



CA7832 055



CA7832 056



CA7832 058



CA7832 060



CA7832 061



CA7832 062



CA7832 063



CA7832 064



CA7832 065



CA7832 066



CA7832 069



CA7832 070



CA7832 071



CA7832 072



CA7832 073



CA7832 074



CA7832 075



CA7832 076



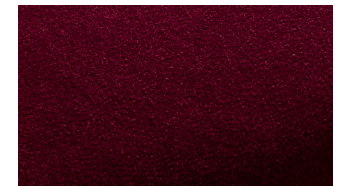
CA7832 077



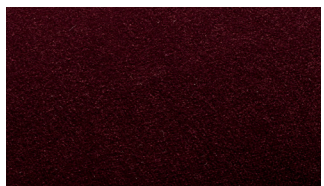
CA7832 078



CA7832 079



CA7832 080



CA7832 081



CA7832 082



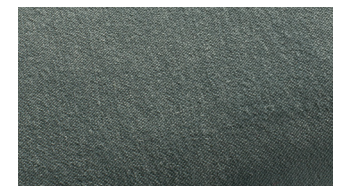
CA7832 083



CA7832 084



CA7832 085



CA7832 086

Textiles City Velvet



CA7832

087



CA7832

088



CA7832

089



CA7832

090



CA7832

091



CA7832

092



CA7832

093



CA7832

094



CA7832

095



CA7832

096



CA7832

099



CA7832

126



CA7832

130



CA7832

160



CA7832

161



CA7832

162



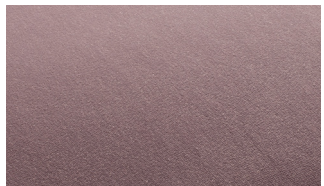
CA7832

165



CA7832

170



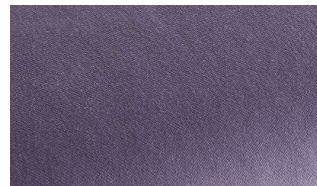
CA7832

180



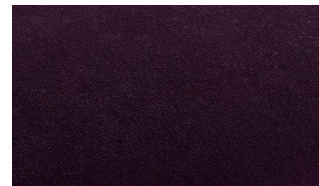
CA7832

181



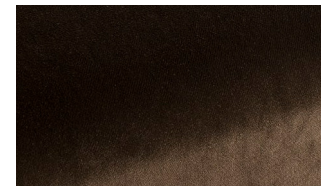
CA7832

184



CA7832

186



CA7832

234



CA7832

263



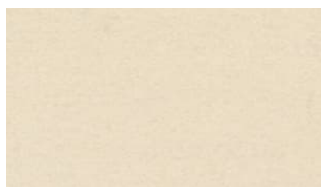
DIVINA 3

Divina is a full-cloth product, which means that it is manufactured by weaving the yarn in a coarse linen hose casing, after which, it is subjected to mechanical processing using very high temperatures, at the same time as it is being coloured. This creates a situation where the surface becomes smooth, directionless and uniform in a manner very similar to the properties of felt.



Category	Kvadrat upholstery
Price Group	5
Pattern	Solid
Composition	100% new wool
Width	Approx. 150 cm (Approx. 59")
Weight	840 g/lin. m (27.09 oz/ly)
Repeat	Approx. 0/0 cm (Approx. 0"/0")
Durability	45,000 Martindale
Pilling	3 (ISO 1-5)
Lightfastness	5-6
Fire Tests	AS/NZS 1530.3 • BS 5852 Crib 5 • BS 5852 part 1 • BS 5867 part 2 type B • IMO FTP Code 2010 Part 8 • NF D 60 013 • NFPA 260 • SN 198 898 5.3 with treatment • UNI 9175 1IM • US Cal. Bull. 117-2013 • EN 1021-1/2 • EN 13501, C-s1, d0, glued • NFPA 701 with treatment • ASTM E84 Class B Unadhered • ASTM E84 Class A Adhered • ÖNORM B1/Q1 • GB 50222 B1 with treatment (Chinese)
Fastness to rubbing	4-5 (Dry) 4-5 (Wet)
Airflow	678 Pa s/m
Absorption	0.60/Class C (Absorption flat) 0.70/Class C (Absorption folded)
Seam Slippage	2 mm (warp), 2 mm (weft)

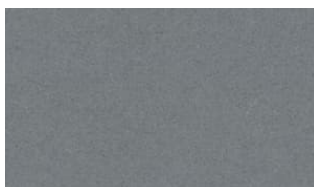
Textiles Divina 3



DIVINA 3 0120



DIVINA 3 0154



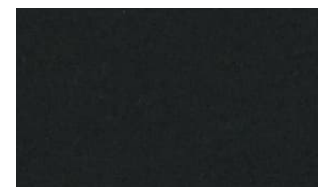
DIVINA 3 0171



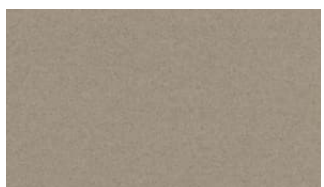
DIVINA 3 0173



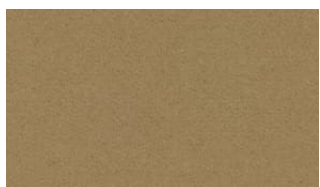
DIVINA 3 0181



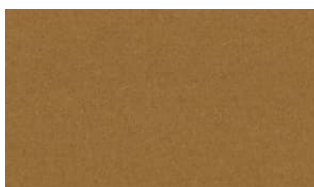
DIVINA 3 0191



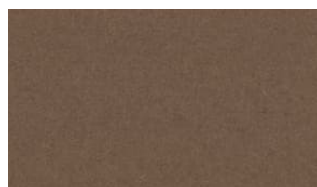
DIVINA 3 0224



DIVINA 3 0236



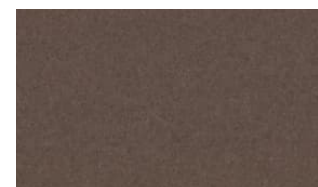
DIVINA 3 0246



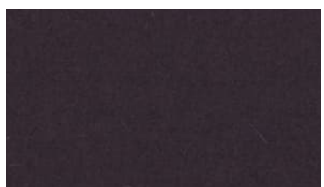
DIVINA 3 0334



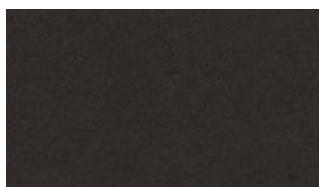
DIVINA 3 0346



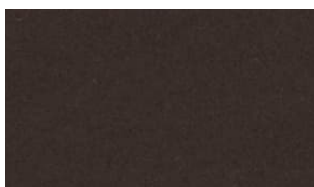
DIVINA 3 0356



DIVINA 3 0376



DIVINA 3 0384



DIVINA 3 0393



DIVINA 3 0426



DIVINA 3 0444



DIVINA 3 0462



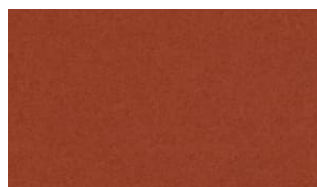
DIVINA 3 0526



DIVINA 3 0536



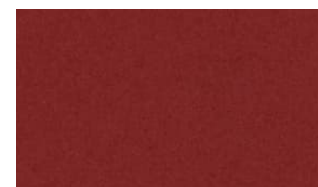
DIVINA 3 0542



DIVINA 3 0552



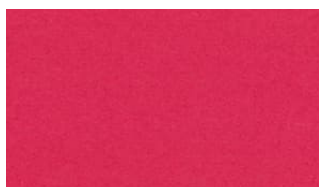
DIVINA 3 0562



DIVINA 3 0584



DIVINA 3 0623



DIVINA 3 0626



DIVINA 3 0636



DIVINA 3 0652



DIVINA 3 0662



DIVINA 3 0666

Textiles Divina 3



DIVINA 3 0671



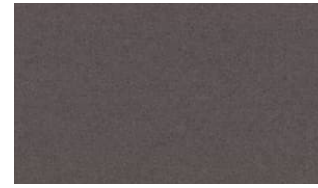
DIVINA 3 0676



DIVINA 3 0684



DIVINA 3 0686



DIVINA 3 0691



DIVINA 3 0692



DIVINA 3 0696



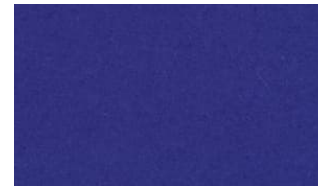
DIVINA 3 0712



DIVINA 3 0742



DIVINA 3 0756



DIVINA 3 0782



DIVINA 3 0791



DIVINA 3 0793



DIVINA 3 0826



DIVINA 3 0836



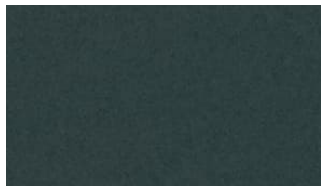
DIVINA 3 0846



DIVINA 3 0856



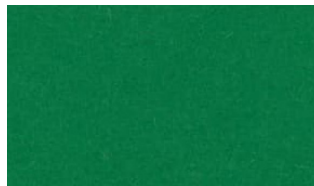
DIVINA 3 0876



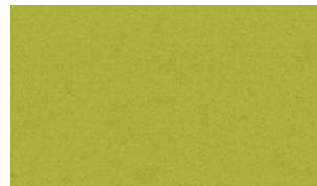
DIVINA 3 0886



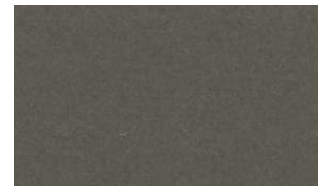
DIVINA 3 0853



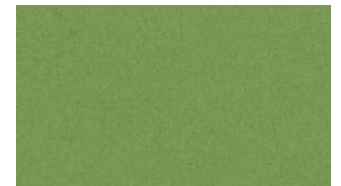
DIVINA 3 0922



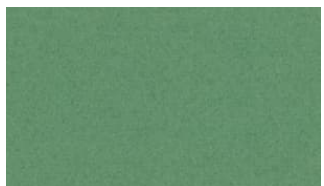
DIVINA 3 0936



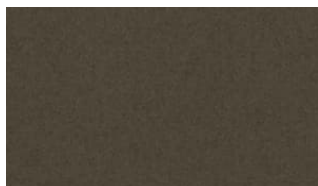
DIVINA 3 0944



DIVINA 3 0956



DIVINA 3 0966



DIVINA 3 0984



Scene Poufs in Hallingdal 65, 0123, Hallingdal 65, 0113 & Hallingdal 65, 0173



DIVINA MD

Divina MD is an upholstery textile designed by Finn Sködt. Available in sophisticated, rich colours, which reveal hidden depths as the perspective of the viewer changes, it makes a strong colour statement.



0293

Category	Kvadrat upholstery
Price Group	5
Pattern	Solid
Composition	100% new wool
Width	Approx. 150 cm (Approx. 59")
Weight	840 g/lin. m (27.09 oz/ly)
Repeat	Approx. 0/0 cm (Approx. 0"/0")
Durability	45,000 Martindale
Pilling	3 (ISO 1-5)
Lightfastness	5-6 (ISO 1-8)
Fire Tests	AS/NZS 1530.3 • BS 5852 Crib 5 • BS 5852 part 1 • BS 5867 part 2 type B • IMO FTP Code 2010 Part 8 • NF D 60 013 • NFPA 260 • SN 198 898 5.3 with treatment • UNI 9175 1IM • US Cal. Bull. 117-2013 • EN 1021-1/2 • EN 13501, C-s1, d0, glued • NFPA 701 with treatment • ASTM E84 Class B Unadhered • ASTM E84 Class A Adhered • ÖNORM B1/Q1 • GB 50222 B1 with treatment (Chinese) (Chinese)
Fastness to rubbing	4-5 (Dry) 4-5 (Wet)
Airflow	678 Pa s/m
Absorption	0.60/Class C (Absorption flat) 0.70/Class C (Absorption folded)
Seam Slippage	2 mm (warp), 2 mm (weft)

Textiles Divina MD



DIVINA MD 0193



DIVINA MD 0203



DIVINA MD 0213



DIVINA MD 0293



DIVINA MD 0343



DIVINA MD 0353



DIVINA MD 0363



DIVINA MD 0413



DIVINA MD 0433



DIVINA MD 0453



DIVINA MD 0613



DIVINA MD 0633



DIVINA MD 0653



DIVINA MD 0673



DIVINA MD 0683



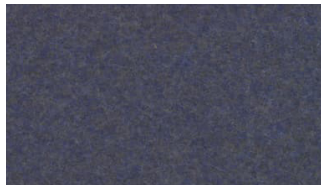
DIVINA MD 0713



DIVINA MD 0733



DIVINA MD 0743



DIVINA MD 0753



DIVINA MD 0773



DIVINA MD 0783



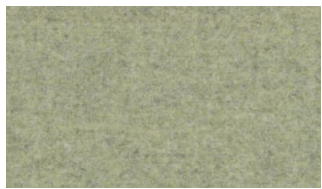
DIVINA MD 0813



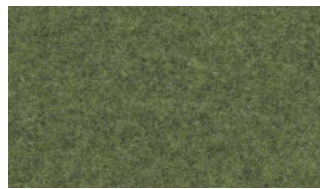
DIVINA MD 0843



DIVINA MD 0873



DIVINA MD 0913



DIVINA MD 0943



DIVINA MD 0973

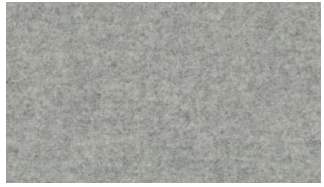
DIVINA MELANGE 3

Divina Melange 3 is a vibrant piece-dyed woollen upholstery textile reminiscent of felt. Cheerfully simple, it comes in a fresh, versatile palette by artist and designer Finn Sködt.

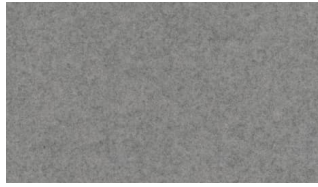


Category	Kvadrat upholstery
Price Group	5
Pattern	Solid
Composition	100% new wool
Width	Approx. 150 cm (Approx. 59")
Weight	840 g/lin. m (27.09 oz/ly)
Repeat	Approx. 0/0 cm (Approx. 0"/0")
Durability	45,000 Martindale
Pilling	3 (ISO 1-5)
Lightfastness	6-7
Fire Tests	AS/NZS 1530.3 • BS 5852 Crib 5 • BS 5852 part 1 • BS 5867 part 2 type B • IMO FTP Code 2010 Part 8 • NF D 60 013 • NFPA 260 • SN 198 898 5.3 with treatment • UNI 9175 1IM • US Cal. Bull. 117-2013 • EN 1021-1/2 • EN 13501, C-s1, d0, glued • Chinese GB 50222B1 with treatment • ÖNORM B1/Q1 • NFPA 701 with treatment • ASTM E84 Class B Unadhered • ASTM E84 Class A Adhered
Fastness to rubbing	5 (Dry) 3-4 (Wet)
Airflow	678 Pa s/m
Absorption	0.60/Class C (Absorption flat) 0.70/Class C (Absorption folded)
Seam Slippage	2 mm (warp), 2 mm (weft)

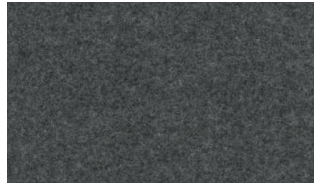
Textiles Divina Melange 3



DIVINA MELANGE 3 0120



DIVINA MELANGE 3 0147



DIVINA MELANGE 3 0170



DIVINA MELANGE 3 0180



DIVINA MELANGE 3 0227



DIVINA MELANGE 3 0237



DIVINA MELANGE 3 0260



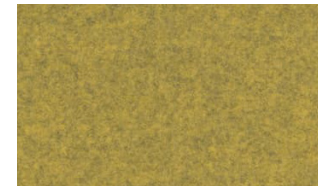
DIVINA MELANGE 3 0277



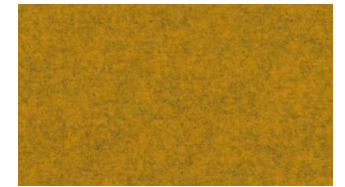
DIVINA MELANGE 3 0280



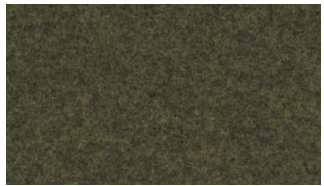
DIVINA MELANGE 3 0367



DIVINA MELANGE 3 0427



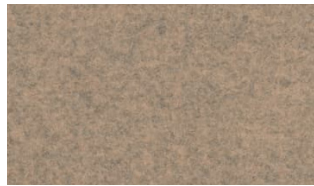
DIVINA MELANGE 3 0457



DIVINA MELANGE 3 0467



DIVINA MELANGE 3 0471



DIVINA MELANGE 3 0517



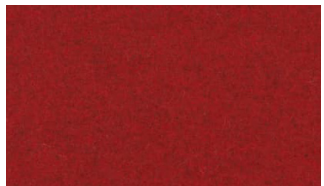
DIVINA MELANGE 3 0527



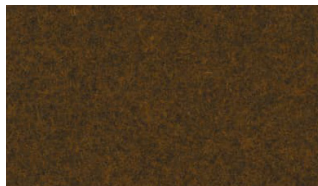
DIVINA MELANGE 3 0547



DIVINA MELANGE 3 0557



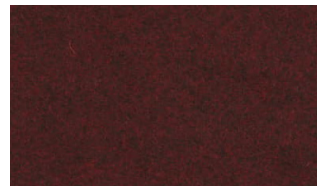
DIVINA MELANGE 3 0567



DIVINA MELANGE 3 0571



DIVINA MELANGE 3 0581



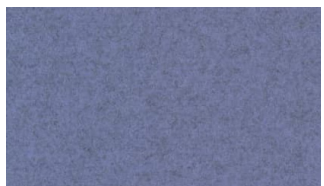
DIVINA MELANGE 3 0597



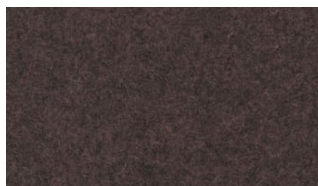
DIVINA MELANGE 3 0617



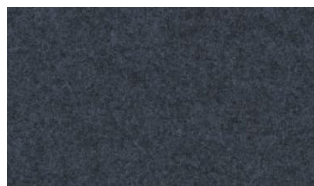
DIVINA MELANGE 3 0620



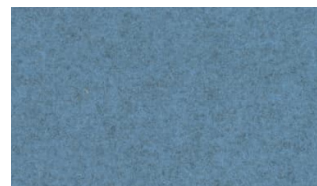
DIVINA MELANGE 3 0647



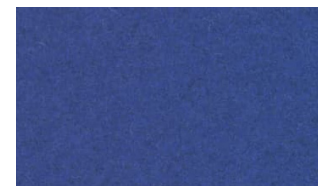
DIVINA MELANGE 3 0677



DIVINA MELANGE 3 0687



DIVINA MELANGE 3 0731



DIVINA MELANGE 3 0747



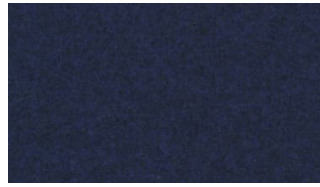
DIVINA MELANGE 3 0757

Textiles Divina Melange 3



DIVINA MELANGE 3

0777



DIVINA MELANGE 3

0787



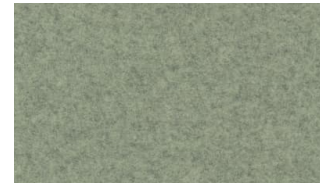
DIVINA MELANGE 3

0821



DIVINA MELANGE 3

0871



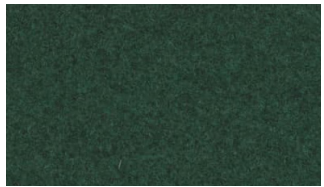
DIVINA MELANGE 3

0917



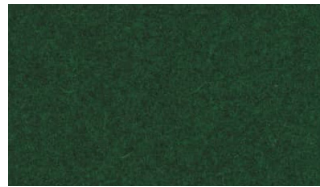
DIVINA MELANGE 3

0937



DIVINA MELANGE 3

0967



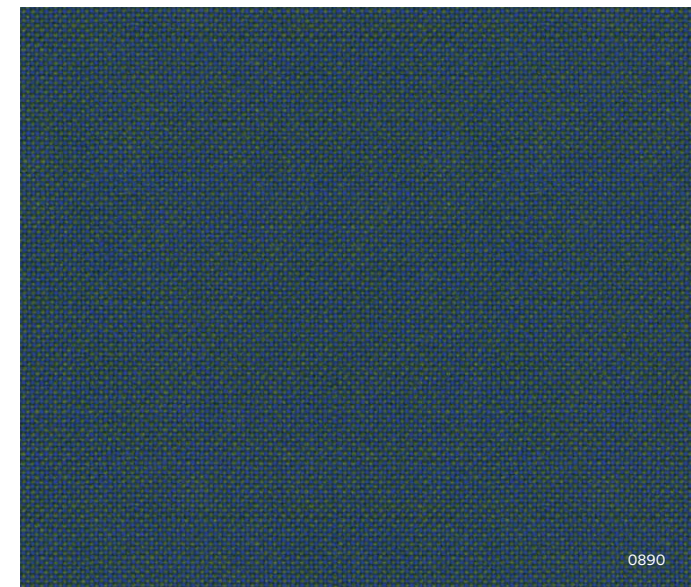
DIVINA MELANGE 3

0977

HALLINGDAL 65

Kvadrat's first textile 'Hallingdal' has become the archetype of woollen textiles. The very durable upholstery fabric was originally designed in 1965 by Nanna Ditzel, and is now available in a version with an updated colour scale: Hallingdal 65.

Hallingdal 65 is made of wool and viscose, which complement each other well: the wool provides excellent durability and flexibility, whilst the viscose adds brilliance and depth to the colour. Both materials are dyed before they are spun, which highlights the rich texture of the fabric.



0890

Category	Kvadrat upholstery
Price Group	5
Pattern	Solid
Composition	70% new wool, 30% viscose
Width	Approx. 130 cm (Approx. 51")
Weight	795 g/lin. m (25.64 oz/ly)
Repeat	Approx. 0/0 cm (Approx. 0"/0")
Durability	100,000 Martindale
Pilling	3-4 (ISO 1-5)
Lightfastness	7
Fire Tests	AS/NZS 1530.3 • BS 5852 Crib 5 • BS 5852 part 1 • IMO FTP Code 2010 Part 8 • NF D 60 013 • NFPA 260 • UNI 9175 1IM • US Cal. Bull. 117-2013 • EN 1021-1/2 • ASTM E84 Class A Adhered • SN 198 898 5.3 with treatment • ÖNORM B1/Q1 • GB 50222 B1 with treatment (Chinese) • AS/NZS 3837 class 2 • ASTM E84 Class B Unadhered
Fastness to rubbing	4-5 (Dry) 3-4 (Wet)
Airflow	182 Pa s/m
Absorption	0.45/Class D (Absorption flat) 0.70/Class C (Absorption folded)
Seam Slippage	4.5 mm (warp), 4 mm (weft)

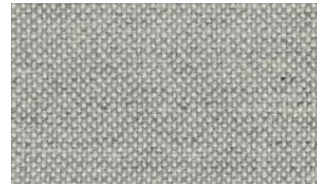
Textiles Hallingdal 65



HALLINGDAL 65 0100



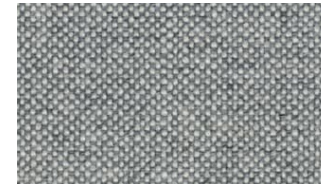
HALLINGDAL 65 0103



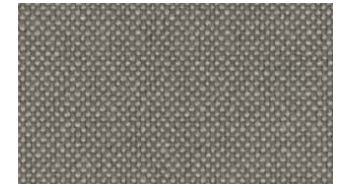
HALLINGDAL 65 0110



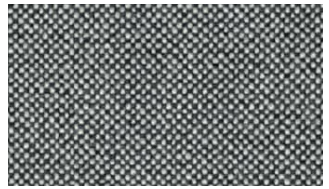
HALLINGDAL 65 0113



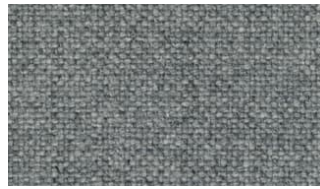
HALLINGDAL 65 0116



HALLINGDAL 65 0123



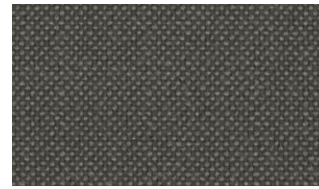
HALLINGDAL 65 0126



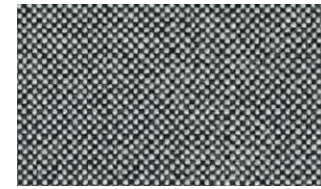
HALLINGDAL 65 0130



HALLINGDAL 65 0143



HALLINGDAL 65 0153



HALLINGDAL 65 0166



HALLINGDAL 65 0173



HALLINGDAL 65 0180



HALLINGDAL 65 0190



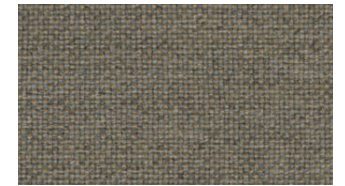
HALLINGDAL 65 0200



HALLINGDAL 65 0220



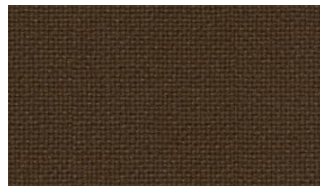
HALLINGDAL 65 0224



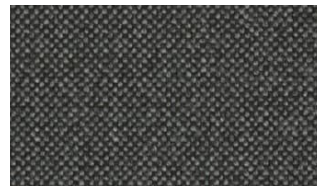
HALLINGDAL 65 0227



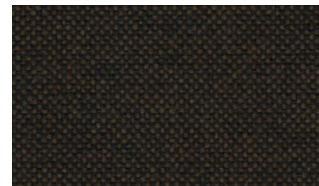
HALLINGDAL 65 0270



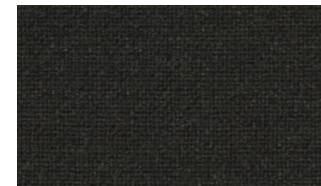
HALLINGDAL 65 0350



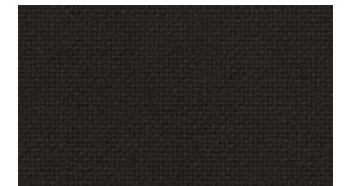
HALLINGDAL 65 0368



HALLINGDAL 65 0370



HALLINGDAL 65 0376



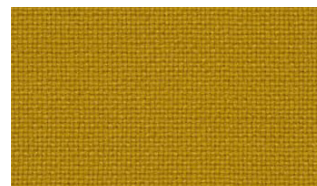
HALLINGDAL 65 0390



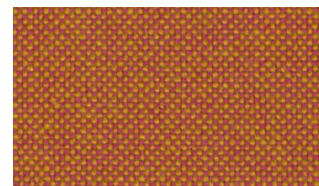
HALLINGDAL 65 0407



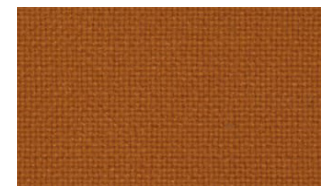
HALLINGDAL 65 0420



HALLINGDAL 65 0457



HALLINGDAL 65 0526

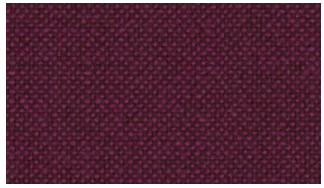


HALLINGDAL 65 0547



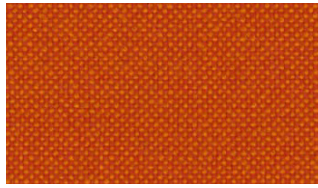
HALLINGDAL 65 0563

Textiles Hallingdal 65



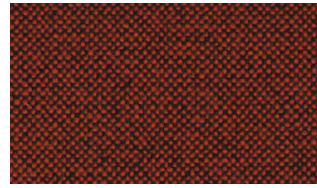
HALLINGDAL 65

0573



HALLINGDAL 65

0590



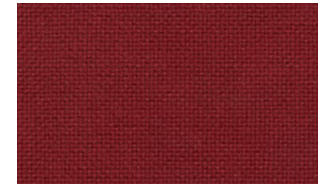
HALLINGDAL 65

0596



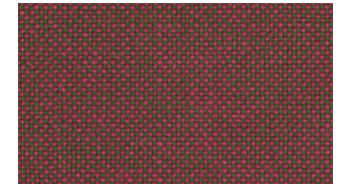
HALLINGDAL 65

0600



HALLINGDAL 65

0657



HALLINGDAL 65

0660



HALLINGDAL 65

0674



HALLINGDAL 65

0680



HALLINGDAL 65

0687



HALLINGDAL 65

0694



HALLINGDAL 65

0702



HALLINGDAL 65

0723



HALLINGDAL 65

0733



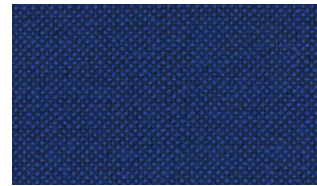
HALLINGDAL 65

0750



HALLINGDAL 65

0753



HALLINGDAL 65

0754



HALLINGDAL 65

0763



HALLINGDAL 65

0764



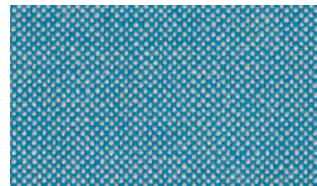
HALLINGDAL 65

0773



HALLINGDAL 65

0810



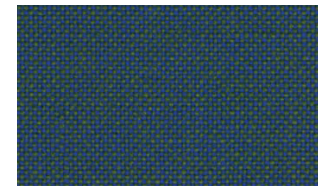
HALLINGDAL 65

0840



HALLINGDAL 65

0850



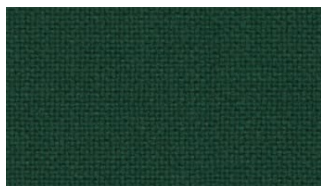
HALLINGDAL 65

0890



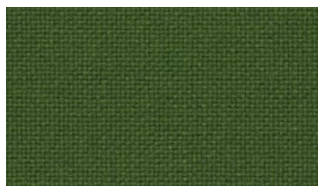
HALLINGDAL 65

0907



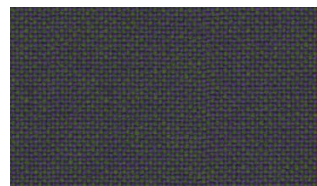
HALLINGDAL 65

0944



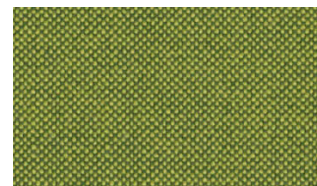
HALLINGDAL 65

0960



HALLINGDAL 65

0968



HALLINGDAL 65

0980



Burra Chairs in Vidar, 1511



FIORD 2

The construction of Fiord combines a mélange yarn with a unicoloured yarn that creates pearl-like dots that play across the textile's surface. This sophisticated expression reflects a key source of inspiration behind the design: moonlight glittering like pearls on the rippling waters of a Norwegian fjord.

0571



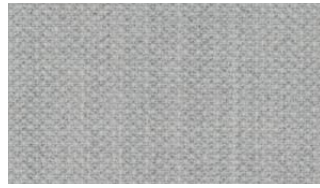
0262

Category	Kvadrat upholstery
Price Group	5
Pattern	Solid
Composition	92% new wool worsted, 8% nylon
Width	Approx. 140 cm (Approx. 55")
Weight	500 g/lin. m (16.13 oz/ly)
Repeat	Approx. 0/0 cm (Approx. 0"/0")
Durability	60,000 Martindale
Pilling	4-5 (ISO 1-5)
Lightfastness	6
Fire Tests	BS 5852 crib 5 with treatment • BS 5852 part 1 • IMO FTP Code 2010 Part 8 • NF D 60 013 • NFPA 260 • SN 198 898 5.3 with treatment • UNI 9175 1IM • US Cal. Bull. 117-2013 • EN 1021-1/2 • ASTM E84 Class A Adhered • ASTM E84 Class A Unadhered • AS/NZS 3837 class 2 • GB 50222 B1 with treatment (Chinese) • ÖNORM B1/Q1
Fastness to rubbing	4-5 (Dry) 4-5 (Wet)
Airflow	484 Pa s/m
Seam Slippage	4.5 mm (warp), 5 mm (weft)

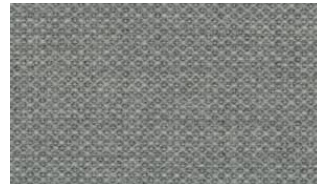
Textiles Fiord 2



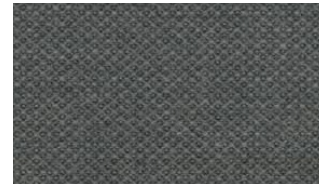
FIORD 2 0101



FIORD 2 0121



FIORD 2 0151



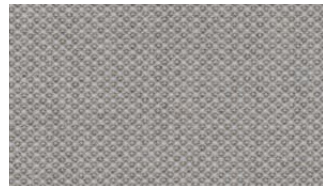
FIORD 2 0171



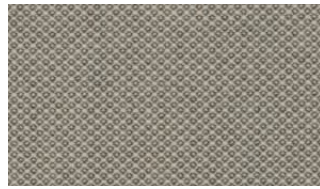
FIORD 2 0191



FIORD 2 0201



FIORD 2 0251



FIORD 2 0262



FIORD 2 0271



FIORD 2 0322



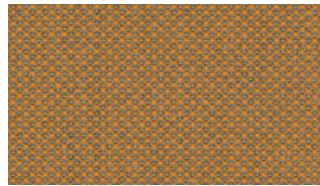
FIORD 2 0351



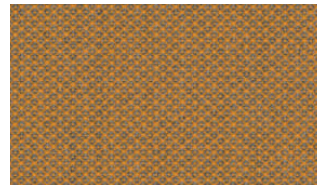
FIORD 2 0371



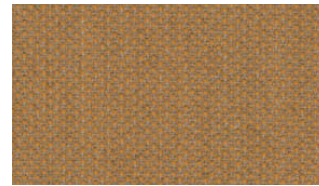
FIORD 2 0391



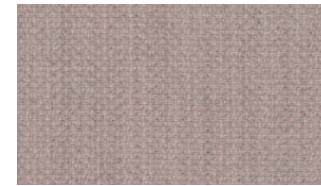
FIORD 2 0422



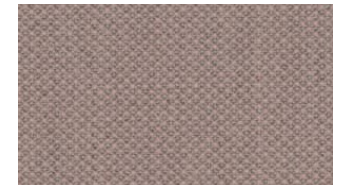
FIORD 2 0442



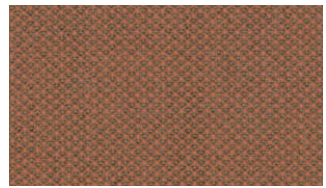
FIORD 2 0451



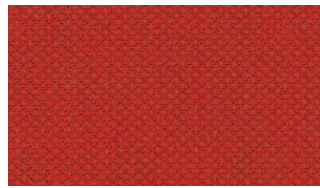
FIORD 2 0521



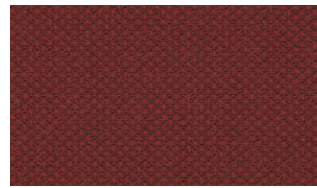
FIORD 2 0551



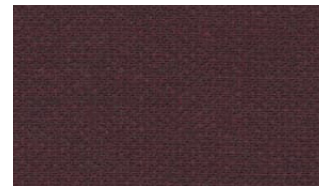
FIORD 2 0562



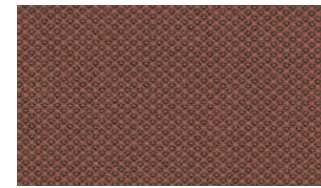
FIORD 2 0571



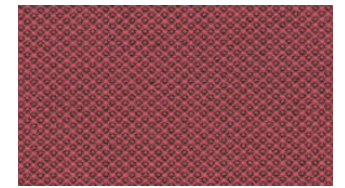
FIORD 2 0581



FIORD 2 0591



FIORD 2 0642



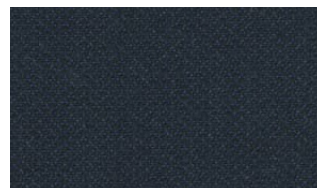
FIORD 2 0662



FIORD 2 0751



FIORD 2 0771



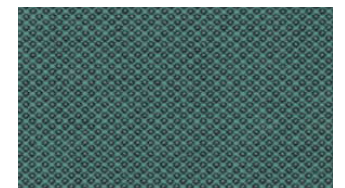
FIORD 2 0782



FIORD 2 0791



FIORD 2 0821



FIORD 2 0862

Textiles Fiord 2



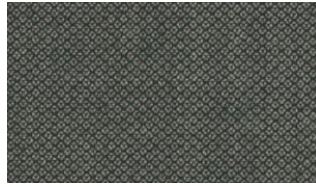
FIORD 2

0951



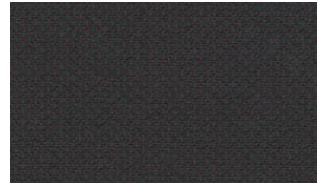
FIORD 2

0961



FIORD 2

0971



FIORD 2

0981



FIORD 2

0991

ZERO

The influence of Parisian couture clothing can be seen in this elegant and irregular bouclé upholstery textile. The pearl effect yarn is used in both warp and weft giving a luxurious handle and a sophisticated appearance. The sixteen colourways range from tonal through to contrasting 'salt and pepper' combinations.



0011



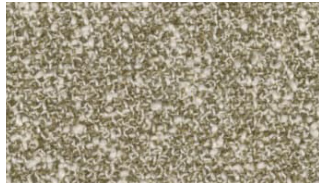
0010

Category	Sahco upholstery
Price Group	6
Composition	65% cotton, 20% polyacrylic, 15% polyester
Width	140 cm (55")
Weight	740 g/lin. m (23.87 oz/ly)
Repeat	0/0 cm (0"/0")
Durability	70,000 Martindale
Pilling	5 (ISO 1-5)
Lightfastness	5-6 (ISO 1-8)
Fire Tests	BS 5852 crib 5 with treatment • EN 1021-1 • US Cal. 117-2013 with Cal. 117 compliant interliner • BS 5852 part 1 with treatment
Seam Slippage	2 mm (warp), 2 mm (weft)

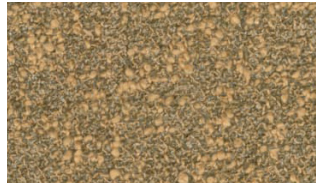
Textiles Zero



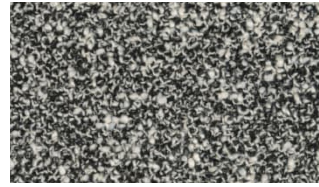
ZERO 0001



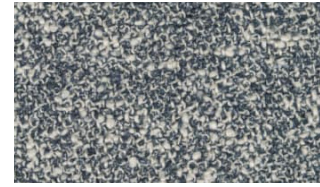
ZERO 0002



ZERO 0003



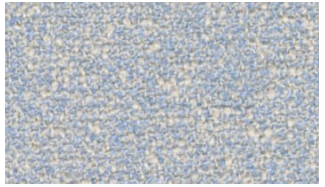
ZERO 0004



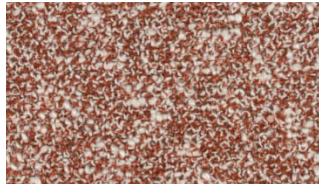
ZERO 0005



ZERO 0006



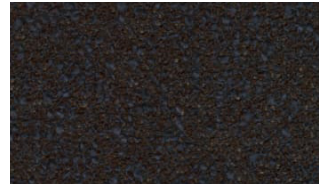
ZERO 0007



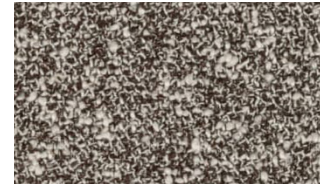
ZERO 0008



ZERO 0009



ZERO 0010



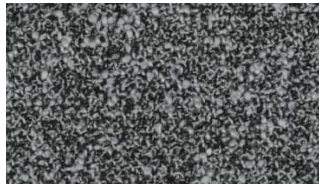
ZERO 0011



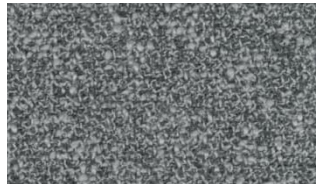
ZERO 0012



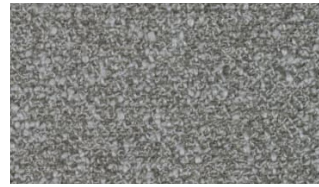
ZERO 0013



ZERO 0014



ZERO 0015



ZERO 0016

VIDAR 4

Originally designed by Fanny Aronsen, Vidar has been re-coloured by Raf Simons, with shades ranging from moss green, dark aubergine, ruby red and midnight blue through to brick and earth tones, and easy neutrals.

Tightly woven, without the irregularities of the other bouclé fabrics within this collection, Vidar has an inviting texture which variously recalls blackberries, orange peel or the comforting close-knit texture of a favourite sweater.



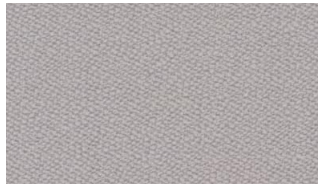
0146

Category	Kvadrat/Raf Simons upholstery
Price Group	6
Pattern	Solid
Composition	94% new wool, 6% nylon
Width	Approx. 140 cm (Approx. 55")
Weight	770 g/lin. m (24.84 oz/ly)
Repeat	Approx. 0/0 cm (Approx. 0"/0")
Durability	100,000 Martindale
Pilling	4 (ISO 1-5)
Lightfastness	7
Fire Tests	BS 5852 crib 5 with treatment • BS 5852 part 1 • IMO FTP Code 2010 Part 8 • NF D 60 013 • NFPA 260 • UNI 9175 1IM • US Cal. Bull. 117-2013 • EN 1021-1/2 • AS/NZS 3837 class 2 • GB 50222 B1 with treatment (Chinese) • SN 198 898 5.3 with treatment • IMO FTP Code 2010 Part 7 with treatment
Fastness to rubbing	3-4 (Dry) 3 (Wet)
Airflow	367 Pa s/m
Absorption	0.55/Class D (Absorption flat)

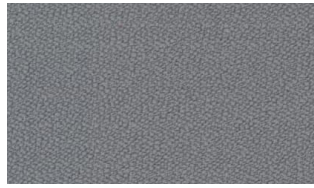
Textiles Vidar 4



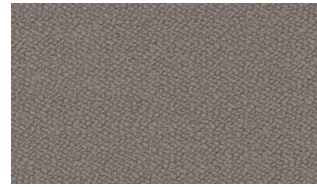
VIDAR 4 0106



VIDAR 4 0123



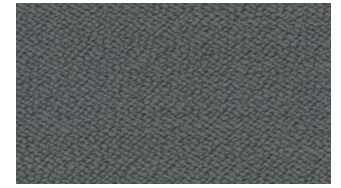
VIDAR 4 0133



VIDAR 4 0143



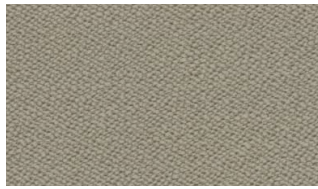
VIDAR 4 0146



VIDAR 4 0152



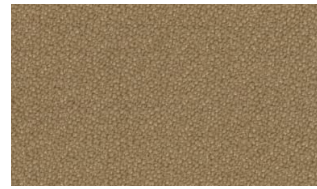
VIDAR 4 0182



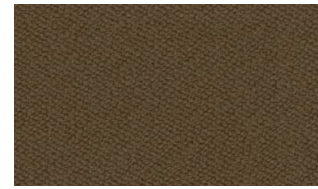
VIDAR 4 0222



VIDAR 4 0323



VIDAR 4 0333



VIDAR 4 0353



VIDAR 4 0363



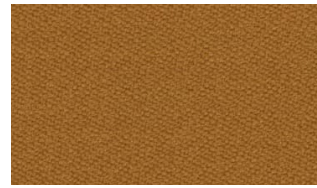
VIDAR 4 0386



VIDAR 4 0443



VIDAR 4 0456



VIDAR 4 0472



VIDAR 4 0526



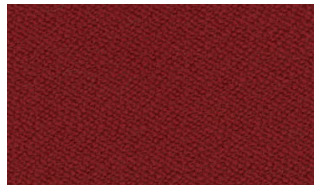
VIDAR 4 0542



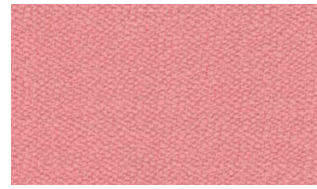
VIDAR 4 0554



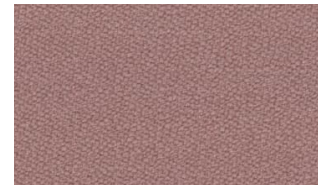
VIDAR 4 0556



VIDAR 4 0582



VIDAR 4 0622



VIDAR 4 0633



VIDAR 4 0653



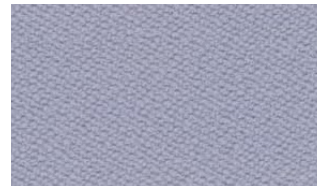
VIDAR 4 0656



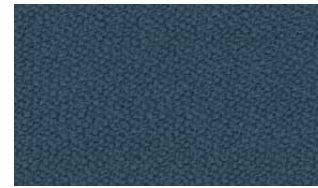
VIDAR 4 0676



VIDAR 4 0693



VIDAR 4 0723



VIDAR 4 0733



VIDAR 4 0743

Textiles Vidar 4



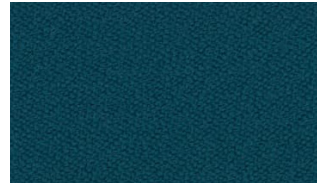
VIDAR 4

0772



VIDAR 4

0786



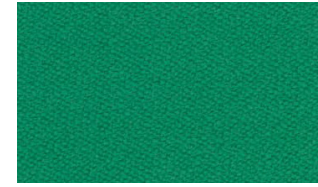
VIDAR 4

0872



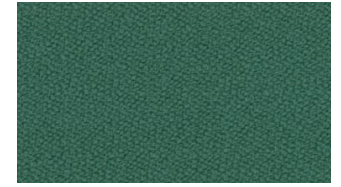
VIDAR 4

0913



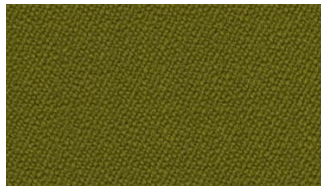
VIDAR 4

0932



VIDAR 4

0943



VIDAR 4

0956



VIDAR 4

0972



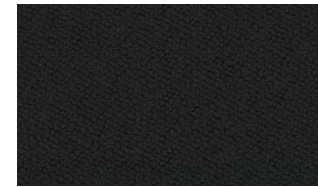
VIDAR 4

1062



VIDAR 4

1511



VIDAR 4

1880



ELLE

A curled bouclé fabric, Elle drapes and curves around furniture like an elegant designer coat. The spun bouclé yarn created by blending wool, viscose and acrylic gives the surface a soft tactility. During the subsequent dyeing the yarns take the colour differently, creating captivating shifts within the same tones.



Category	Sahco upholstery
Price Group	7
Composition	25% cotton, 20% viscose, 20% polyacrylic, 20% wool, 15% polyamide
Width	140 cm (55")
Weight	900 g/lin. m (29.03 oz/ly)
Repeat	0/0 cm (0"/0")
Durability	70,000 Martindale
Pilling	4-5 (ISO 1-5)
Lightfastness	6 (ISO 1-8)
Fire Tests	US Cal. Bull. 117-2013 • BS 5852 crib 5 with treatment • EN 1021-1/2 • BS 5852 part 1 • IMO FTP Code 2010 Part 8
Fastness to rubbing	4-5 (Dry) 4 (Wet)
Seam Slippage	7 mm (warp), 2 mm (weft)

Textiles Elle



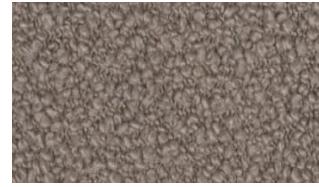
ELLE 0150



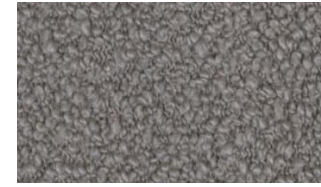
ELLE 0180



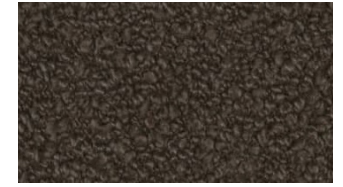
ELLE 0200



ELLE 0220



ELLE 0230



ELLE 0280



ELLE 0290



ELLE 0350



ELLE 0390



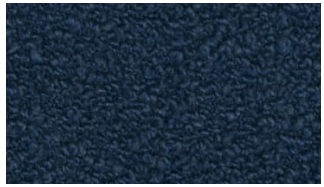
ELLE 0480



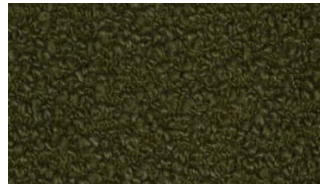
ELLE 0530



ELLE 0680



ELLE 0750



ELLE 0950

RAR COLLECTION

A timeless, dark grey fabric, elegantly woven with a classic weave texture, Re-Born is primarily crafted from a recycled polyethylene and a hardwearing polyester.

The sophisticated Venezia Off-White textile features a combination of slightly different off-white shades woven into each other with a tactility reminiscent of a subtle bouclé-like fabric.



RE-BORN

DARK GREY



VENEZIA

OFF-WHITE

RE-BORN

Composition	60% recycled polyethylene, 40% polyester
Durability	100.000 Martindale
Lightfastness	4-5
Pilling	4

VENEZIA

Composition	62% polyester, 17% cotton, 14% viscose, 7% linen
Durability	40.000 Martindale
Lightfastness	5
Pilling	4



Rar Sofa in Venezia Off-White & Rar Cushions 50x50 in Venezia Off-White and Re-Born Dark Grey

CONTACT

NORMANN COPENHAGEN

Niels Hemmingsens Gade 12,
1153 Copenhagen, Denmark

normann@normann-copenhagen.com

+45 35 55 44 59

normann
C O P E N H A G E N