

WOUD FABRIC AND LEATHER SELECTION



WOUD UPHOLSTERY SELECTION

Get an overview of our defined fabric and leather options. The upholstery programme for Collar, Flora, Nakki and Meadow consists of different fabric and leather price groups. Covering more than 750 textile and leather (Nakki and Meadow only) alternatives from high-quality textile manufacturer brands. Please note that we can not guarantee that fabrics with distinct pattern of direction will align where sewn together.

Custom upholstery orders are ready to ship with standard delivery lead time of 8-10 weeks. It is possible to use customer's own materials (COM) with extended delivery lead times upon fabric approval. COM-prices are based on price group 1A.

Fire retardent foam is available upon request and standard for all Great Britain orders.

Please note that the presented colour references are only intended as a guide. For further information and care instructions, please see manufacturer websites:

kvadrat.dk

gabriel.dk

sorensenleather.com

nevotex.com

Explore our upholstered furniture at woudesign.com/fabric-collection/

TEXTILE PRICE GROUP 1A

Textafoam Alpine *

TEXTILE PRICE GROUP 1B

Reflect, Kvadrat

Cura, Gabriel

Cyber, Gabriel

Step Melange, Gabriel

TEXTILE PRICE GROUP 2A

Gaja C2C, Gabriel

Remix 3, Kvadrat

Re-wool, Kvadrat

TEXTILE PRICE GROUP 2B

Ara, Kvadrat

Clay, Kvadrat

Ecriture, Kvadrat

Fiord 2, Kvadrat

Hallingdal 65, Kvadrat

Steelcut trio 3, Kvadrat

Vidar 4, Kvadrat

Barnum, Nevotex

TEXTILE PRICE GROUP 3A

Harald 3, Kvadrat (currently not available for meadow)

Nara, Kvadrat

Sisu, Kvadrat

LEATHER PRICE GROUP 1

Envy, Sørensen Leather

Nuance, Sørensen Leather

LEATHER PRICE GROUP 2

Duet, Sørensen Leather

Dunes, Sørensen Leather

Savanne, Sørensen Leather

Spectrum, Sørensen Leather

LEATHER PRICE GROUP 3

Royal nubuck, Sørensen Leather



TEXTILE/LEATHER	COLLAR	FLORA	MEADOW	NAKKI
TEXTILE PRICE GROUP 1 A				
Alpine, Textafoam	●	●	●	●
TEXTILE PRICE GROUP 1 B				
Reflect, Kvadrat	●	●	●	●
Cura, Gabriel	●	●	●	●
Cyber, Gabriel	●	●	●	●
Step Melange, Gabriel	●	●	●	●
TEXTILE PRICE GROUP 2 A				
Remix 3, Kvadrat	●	●	●	●
Re-wool, Kvadrat	●	●	●	●
Gaja C2C, Gabriel	●	●	●	●
TEXTILE PRICE GROUP 2 B				
Ara, Kvadrat	●	●	●	●
Clay, Kvadrat	●	●	●	●
Ecriture, Kvadrat	●	●	●	●
Fiord 2, Kvadrat	●	●	●	●
Hallingdal 65, Kvadrat	●	●	●	●
Steelcut trio 3 , Kvadrat	●	●	●	●
Vidar 4, Kvadrat	●	●	●	●
TEXTILE PRICE GROUP 3 A				
Harald 3, Kvadrat	●	●		●
Nara, Kvadrat	●	●	●	●
Sisu, Kvadrat	●	●	●	●
LEATHER PRICE GROUP 1				
Nuance, Sørensens Leather			●	●
Envy, Sørensens Leather			●	●
LEATHER PRICE GROUP 2				
Savanne, Sørensens Leather			●	●
Spectrum, Sørensens Leather			●	●
Duet, Sørensens Leather			●	●
Dunes, Sørensens Leather			●	●
LEATHER PRICE GROUP 3				
Royal nubuck, Sørensens Leather			●	●



TEXTAAFOAM

ALPINE AUTHENTIC BOUCLÉ



COMPOSITION
96% PES, 4% PAC

MARTINDALE
75.000

PILLING
4

CARE INSTRUCTIONS

LIGHTFASTNESS
5

TEAR GROWTH RESISTANCE
WARP: 136,9
WEFT: 176,3

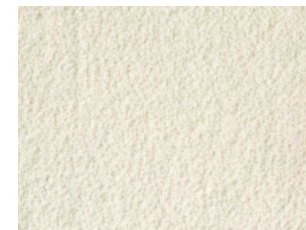
SEAM SLIPPAGE
WARP: 2.0
WEFT: 2.0

WIDTH AND WEIGHT
+/- 143 CM
+/- 680 G/M

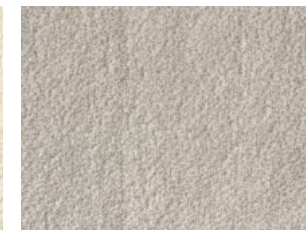
TENSILE STRENGTH
WARP: 1514
WEFT: 717

SELECTED UPHOLSTERY OPTIONS

PLEASE NOTE THAT THE COLOUR REFERENCES ARE ONLY INTENDED AS A GUIDE



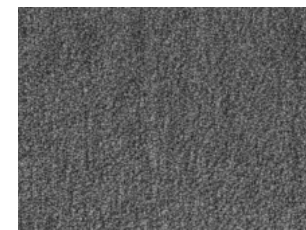
IVORY 101



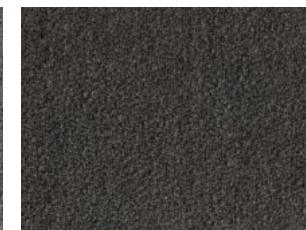
NATURAL 01



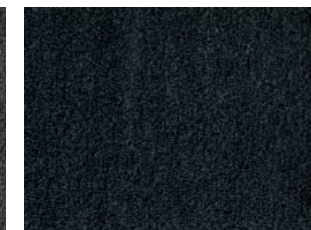
STEEL 149



GREY 65



DARK BROWN 18



ONYX 169

1A

Textile price group



UPHOLSTERY
TEXTAAFOAM, ALPINE, 101

1B

Textile price group

REFLECT

RECYCLED POLYESTER TWILL WEAVE TEXTILE



COMPOSITION
100% POST-CONSUMER RECYCLED POLYESTER

MARTINDALE
100.000

PILLING
4

CARE INSTRUCTIONS



LIGHTFASTNESS
6

SUSTAINABILITY
GREENGUARD GOLD, HPD, EPD

SEAM SLIPPAGE
WARP: 2.5
WEFT: 2.5

WIDTH AND WEIGHT
+/- 140 CM
+/- 430 G/M

MANUFACTURED IN
HOLLAND

DESIGNER
PATRICIA URQUIOLA



0104

0114

0124

0154

0164

0174

0184

0194

0204

0224

0274

0344



0374

0384

0404

0434

0444

0464

0564

0574

0614

0644

0674

0694

0714

0744

0774

0794

0824

0884

0924

0944

0964

0984

0994

CURA

TWO-COLOURED FABRIC MADE FROM POST-CONSUMER RECYCLED POLYESTER



COMPOSITION
98% POST-CONSUMER RECYCLED POLYESTER
2% POLYESTER

MARTINDALE
100.000

PILLING
4-5

CARE INSTRUCTIONS
40° X X X P

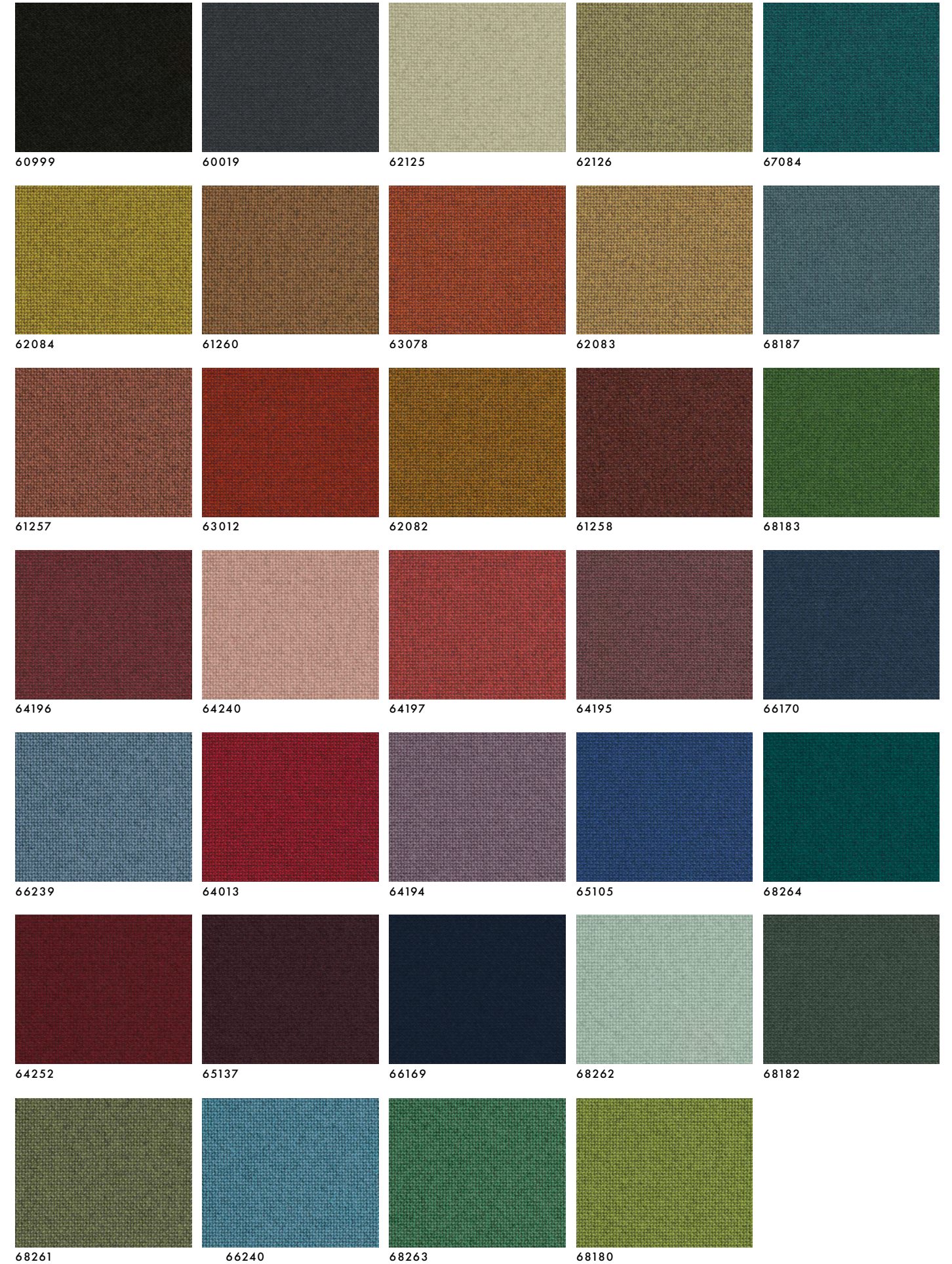
LIGHTFASTNESS
5-8

SUSTAINABILITY
STANDARD 100 BY OEKO-TEX®
EU ECOLABEL

WIDTH AND WEIGHT
+/- 140 CM
+/- 420 G/M

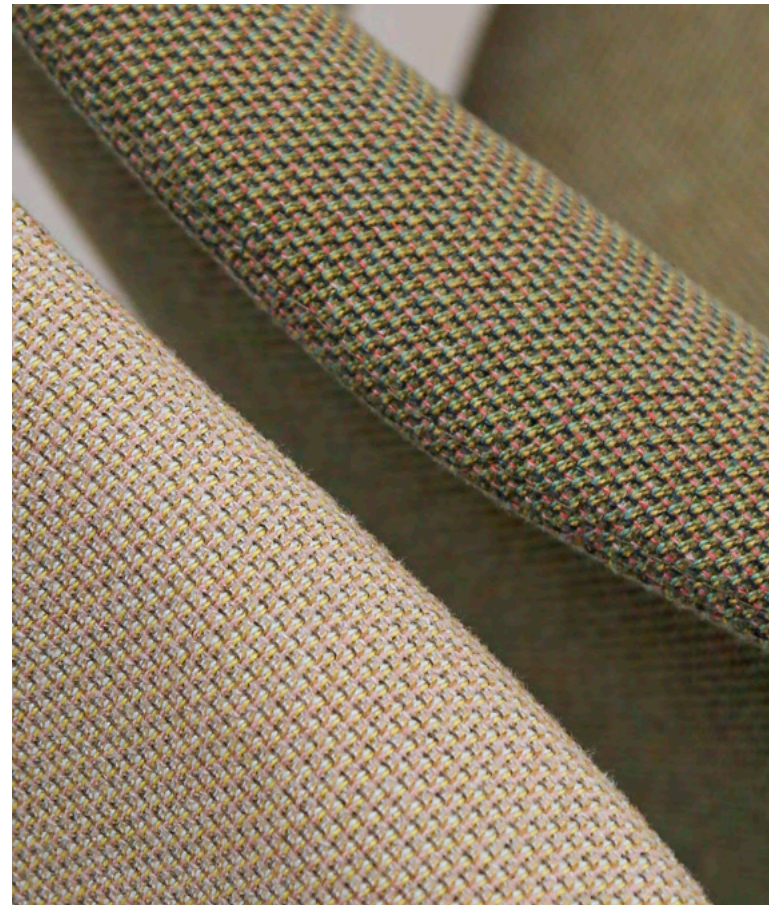
FLAMMABILITY
CONTAINS NO FLAME RETARDANT
CHEMICALS

DESIGNER
CENK KIRIKOGLU



CYBER

MATT MULTI-COLOURED LOW IMPACT FABRIC



COMPOSITION
100% POST-CONSUMER RECYCLED POLYESTER

MARTINDALE
120.000

PILLING
4-5

CARE INSTRUCTIONS
40°C, No Bleach, No Iron, No Dry Clean, No Steam, No Tumble Dry

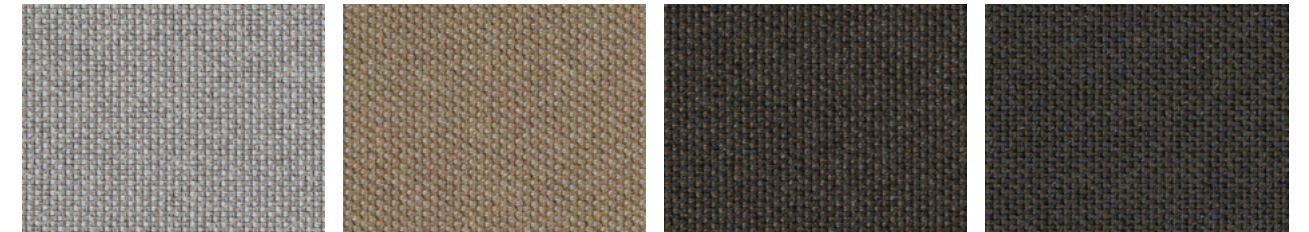
LIGHTFASTNESS
7-8

SUSTAINABILITY
STANDARD 100 BY OEKO-TEX®
EU ECOLABEL

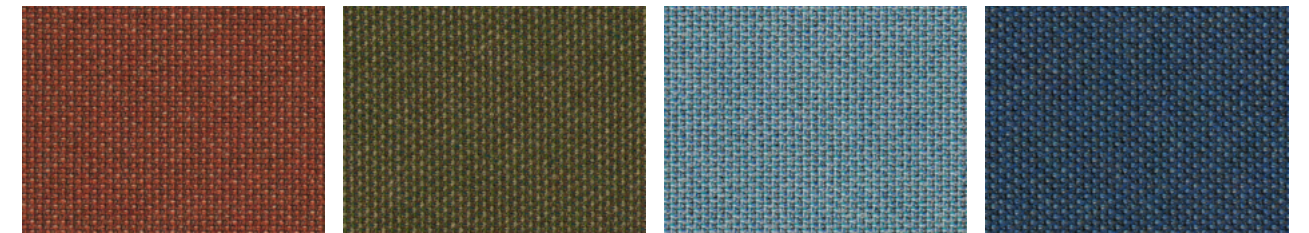
WIDTH AND WEIGHT
+/- 140 CM
+/- 570 G/M

FLAMMABILITY
CONTAINS NO FLAME RETARDANT
CHEMICALS

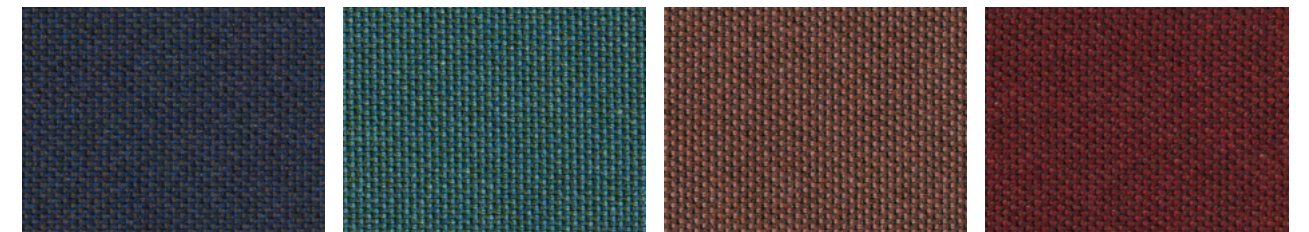
DESIGNER
CENK KIVRIKOGLU



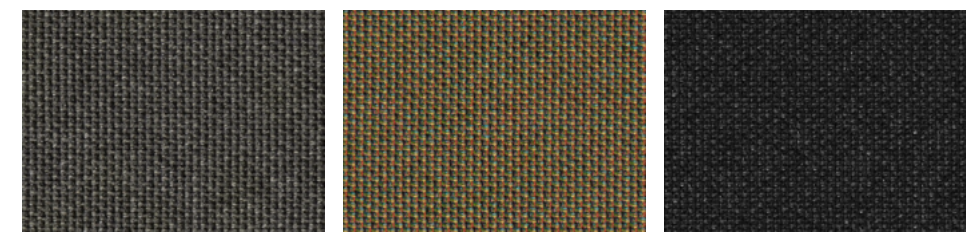
1901 2001 2101 2102



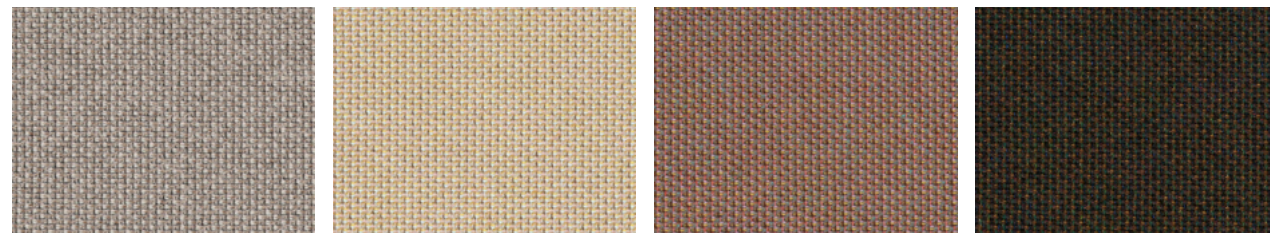
2201 2301 2401 2501



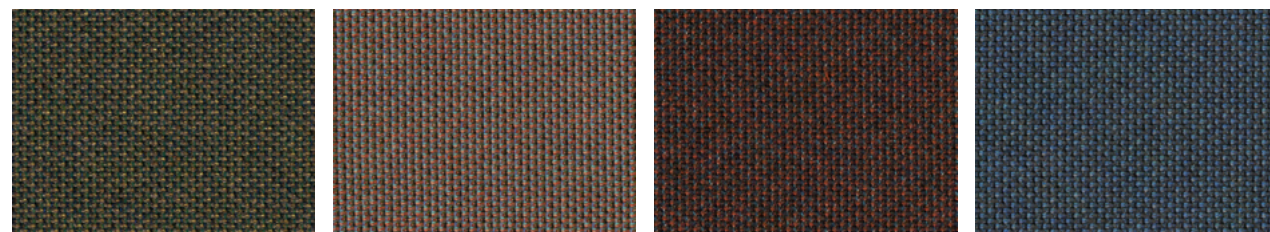
2502 2601 2701 2801



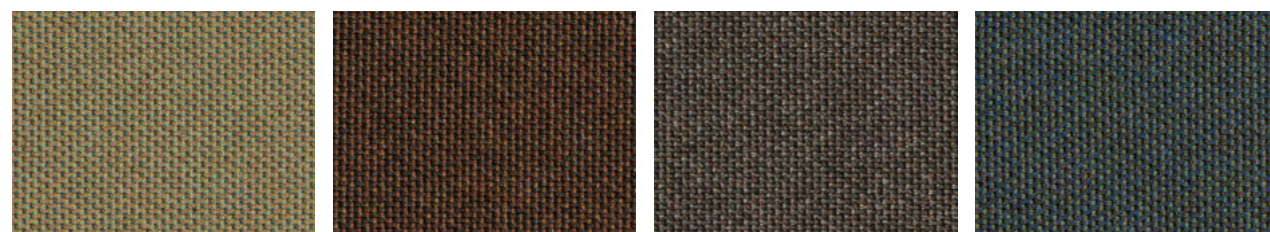
2901 3001 3101



1101 1102 1201 1301



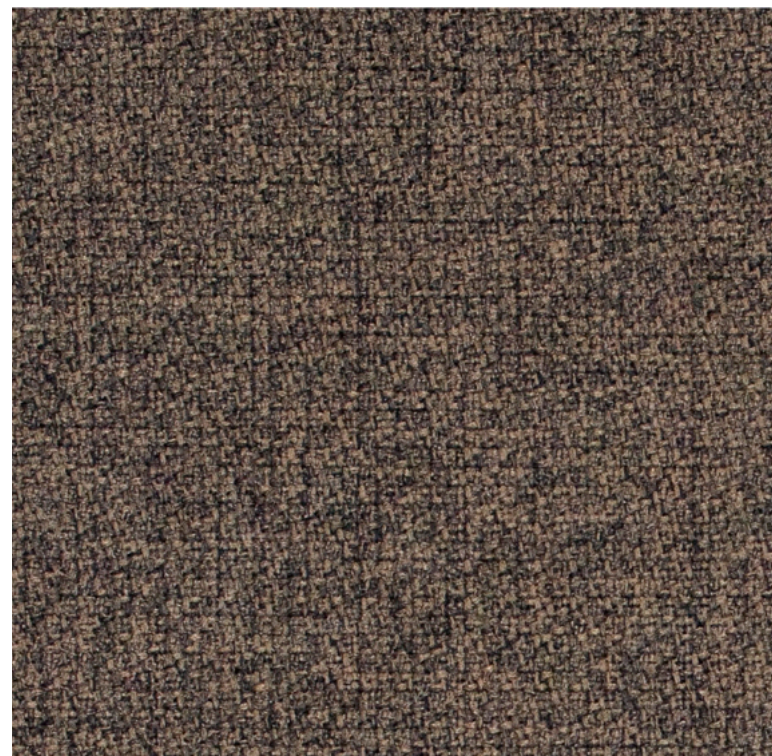
1302 1401 1501 1601



1701 1801 1802 1803

STEP MELANGE

DELICATE MELANGE EFFECT



COMPOSITION
100% TREVIRA CS (POLYESTER)

MARTINDALE
100.000

PILLING
4-5

CARE INSTRUCTIONS

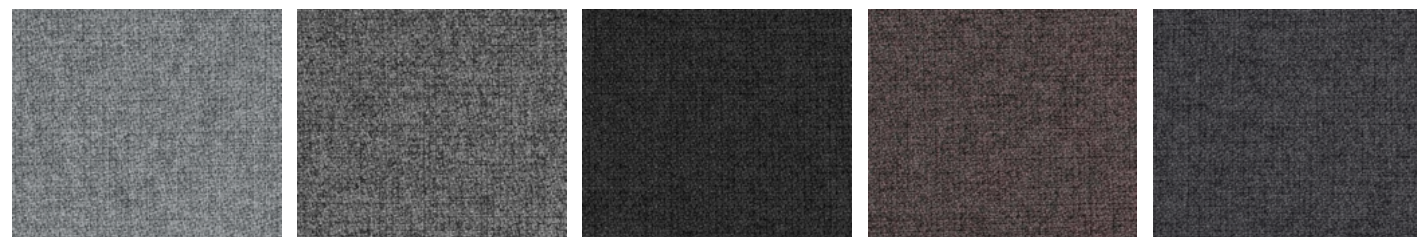


LIGHTFASTNESS
5-7

SUSTAINABILITY
STANDARD 100 BY OEKO-TEX®
EU ECOLABEL
MEETS MÖBELFAKTA REQUIREMENTS

WIDTH AND WEIGHT
+/- 140 CM
+/- 470 G/M

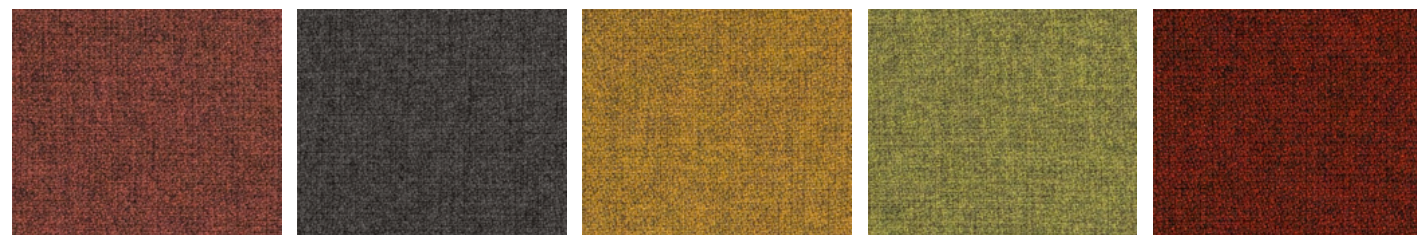
FLAMMABILITY
POWERFUL FIRE-RESISTANT



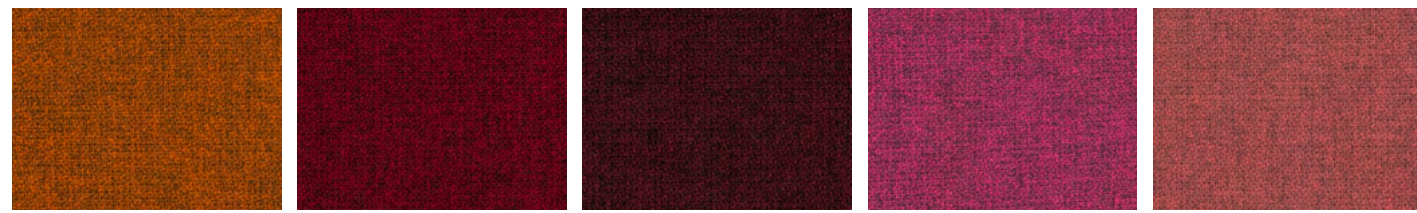
60004 60011 60021 60090 60092



61102 61103 61104 61149 61150



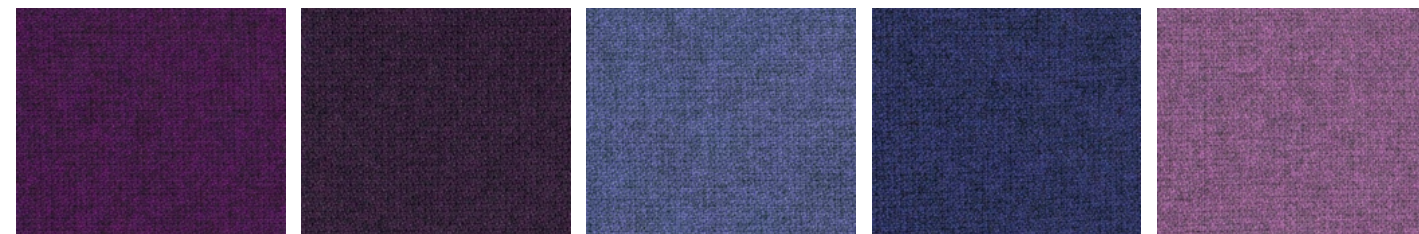
61151 61152 62057 62073 63075



63082 64013 64159 64177 64178



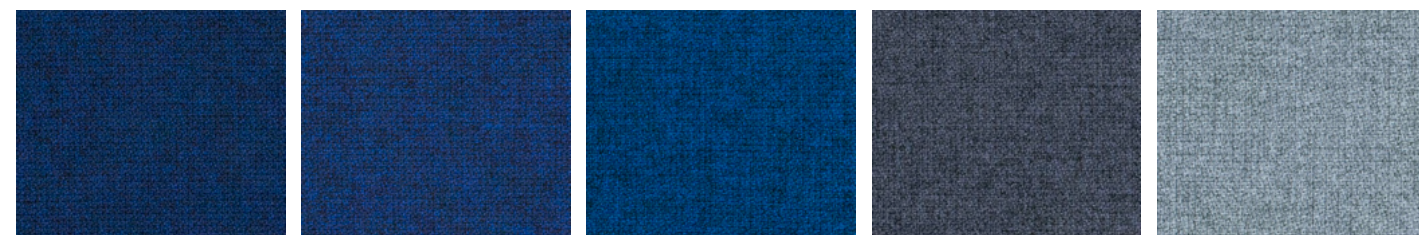
64179 64181 64182 65011 65018



65023 65047 65090 65091 65092



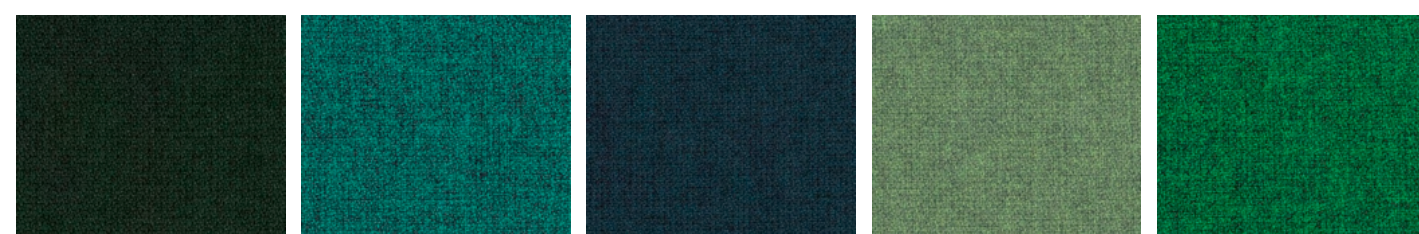
65093 65094 66018 66019 66148



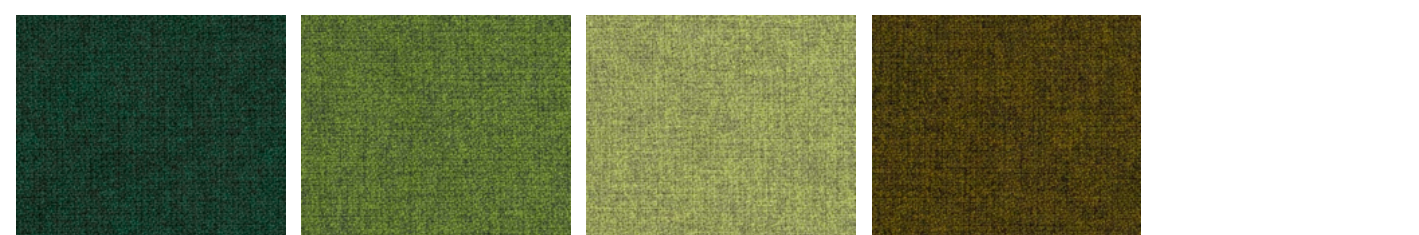
66149 66150 66151 66152 67004



67007 67072 68118 68119 68120



68121 68157 68158 68159 68160



68161 68162 68163 68165

2A

Textile price group

KVADRAT

PRICE GROUP 2A

REMIX 3

UNICOLOUR FROM A DISTANCE, MELANGE WHEN YOU GET CLOSER



COMPOSITION

90% NEW WOOL WORSTED, 10% NYLON

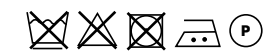
MARTINDALE

100.000

PILLING

4 (ISO 1-5)

CARE INSTRUCTIONS



LIGHTFASTNESS

5-7

SEAM SLIPPAGE

WARP: 5

WEFT: 3

WIDTH AND WEIGHT

+/- 140 CM

+/- 420 G/M

SUSTAINABILITY

EU ECOLABEL, GREENGUARD GOLD, HPD, EPD

MANUFACTURED IN

UNITED KINGDOM

DESIGNER

GIULIO RIDOLFO



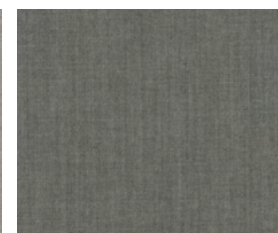
0113



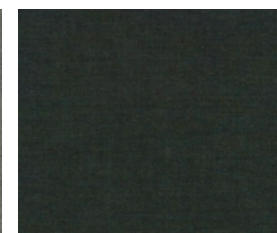
0123



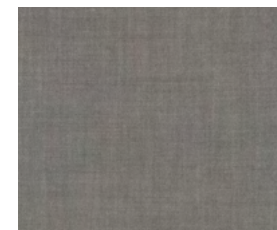
0126



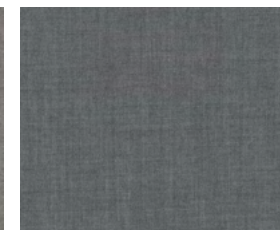
0133



0973



0136



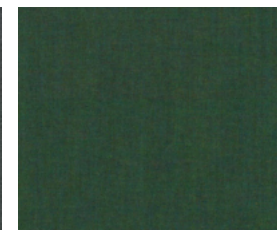
0143



0152



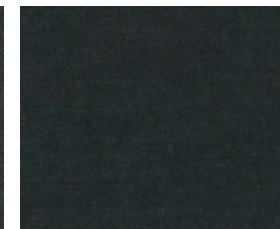
0163



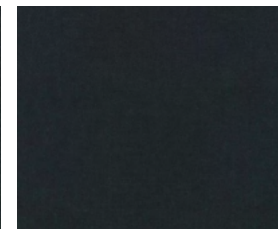
0982



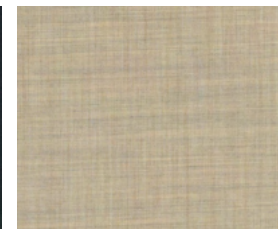
0173



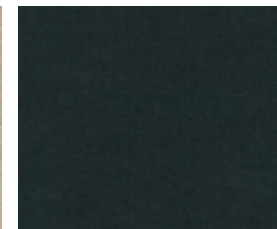
0183



0196



0223



0996



GAJA C2C

PURE WOOL, CRADLE TO CRADLE CERTIFIED TEXTILE



COMPOSITION

100% NEW ZEALAND WOOL, RECYCLABLE

MARTINDALE

50.000

PILLING

4-5

CARE INSTRUCTIONS



LIGHTFASTNESS

5-7

SUSTAINABILITY

GREENGUARD GOLD, HPD, EPD
CRADLE TO CRADLE CERTIFIED® SILVER
CONTAINS NO HARMFUL SUBSTANCES AND CAN
BE COMPOSTED

WIDTH AND WEIGHT

+/- 140 CM
+/- 530 G/M

FLAMMABILITY

CONTAINS NO FLAME RETARDANT CHEMICALS

DESIGNER

DORTE BO BOJESEN



RE-WOOL

DYNAMIC WOOL WITH A SUSTAINABLE PROFILE



COMPOSITION
45% RECYCLED WOOL, 45% NEW WOOL
WORSTED, 10% NYLON

MARTINDALE
100.000

PILLING
4 (ISO 1-5)

CARE INSTRUCTIONS
☒ ☒ ☒ ☒ ☒

LIGHTFASTNESS
6

SEAM SLIPPAGE
WARP: 3,5
WEFT: 5

WIDTH AND WEIGHT
+/- 140 CM
+/- 540 G/M

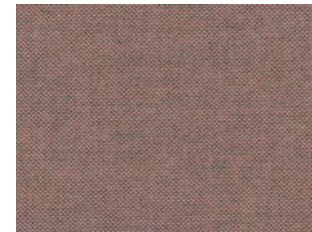
SUSTAINABILITY
EU ECOLABEL, GREENGUARD GOLD,
HPD, EPD

MANUFACTURED IN
UNITED KINGDOM

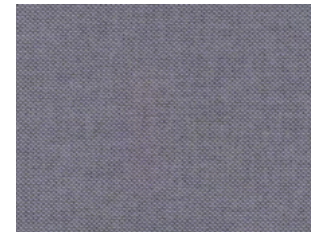
DESIGNER
MARGRETHE ODGAARD



0628



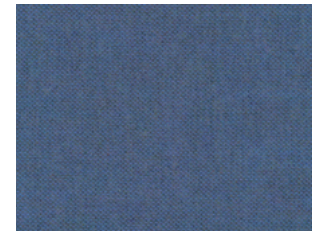
0648



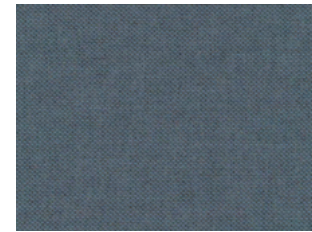
0658



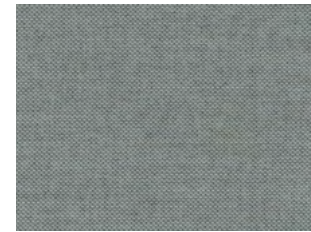
0718



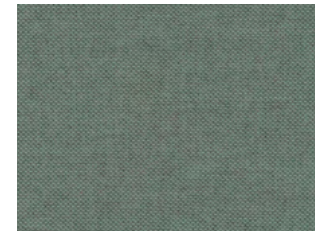
0758



0768



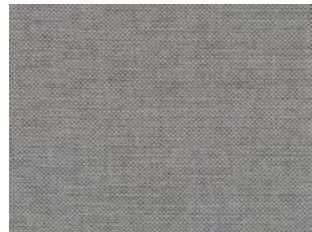
0828



0858



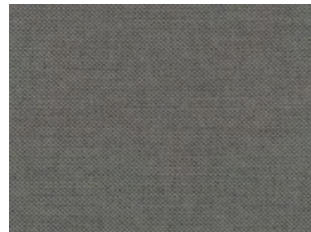
0868



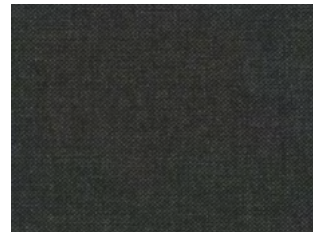
0108



0128



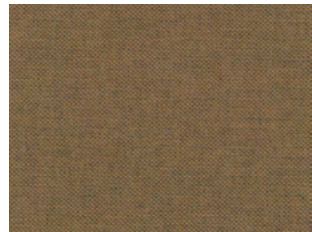
0158



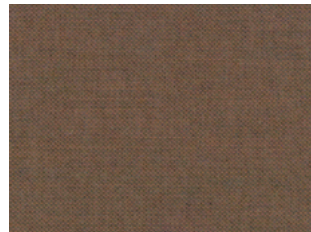
0198



0218



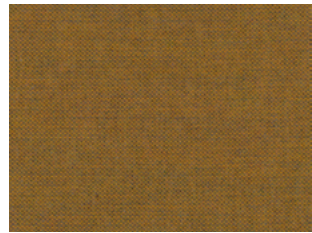
0358



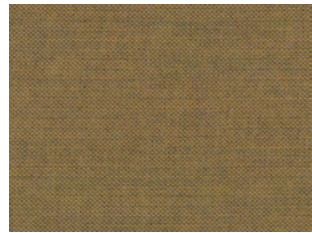
0378



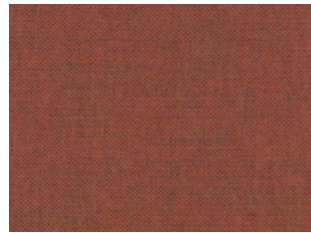
0408



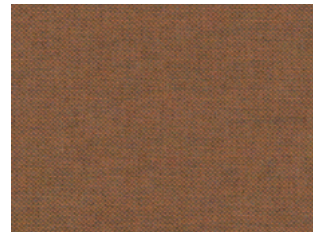
0448



0458



0558



0568

2B

Textile price group

KVADRAT

PRICE GROUP 2B

ARA DOTS OF COLOUR



COMPOSITION

92% NEW WOOL WORSTED, 8% NYLON

MARTINDALE

70.000

PILLING

4

CARE INSTRUCTIONS



LIGHTFASTNESS

5-6

SUSTAINABILITY

GREENGUARD GOLD, HPD, EPD

SEAM SLIPPAGE

WARP: 5

WEFT: 7

WIDTH AND WEIGHT

+/- 148 CM

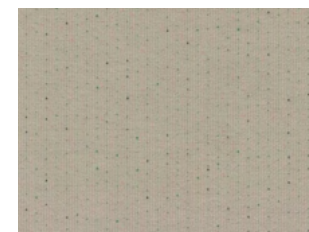
+/- 530 G/M

MANUFACTURED IN

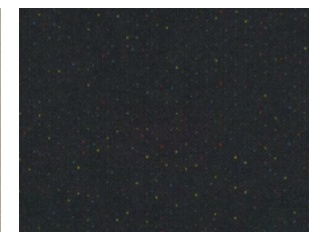
NORWAY

DESIGNER

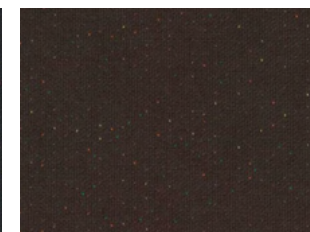
MARGRETHE ODGAARD



0104



0194



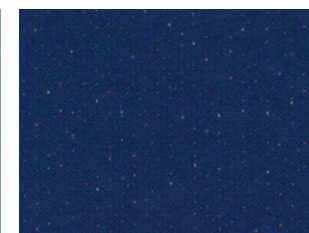
0294



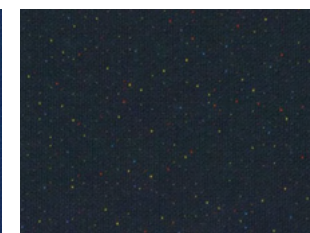
0354



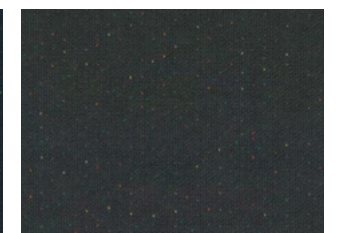
0724



0764



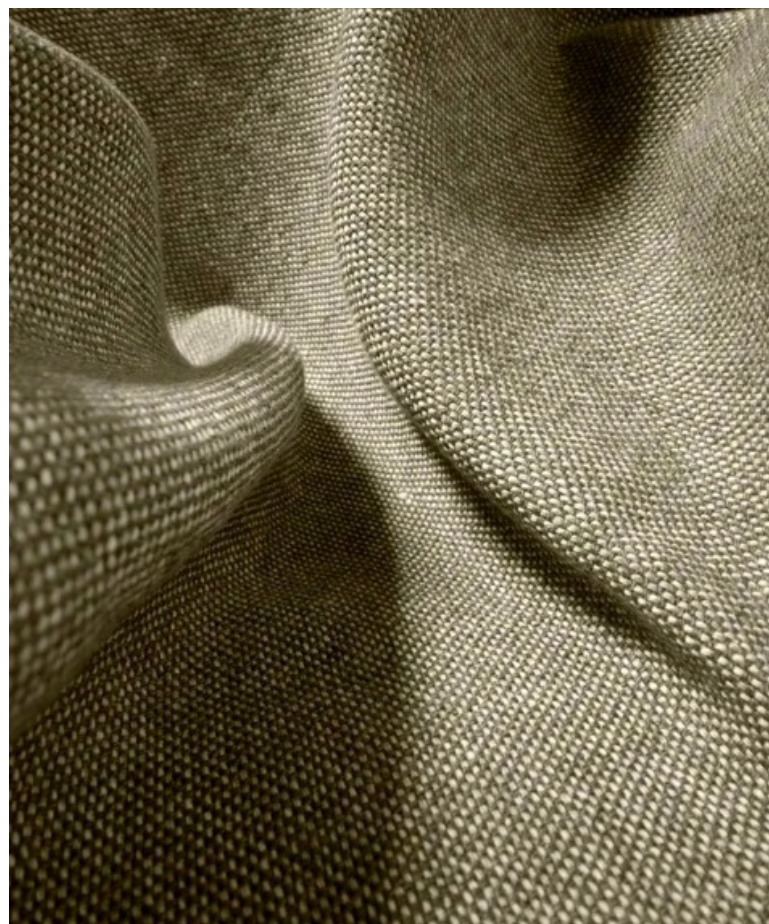
0794



0994

CLAY

A MIX OF COLOURED YARNS



COMPOSITION
76% LINEN, 21% COTTON, 3% POLYESTER

MARTINDALE
45.000

PILLING
4 (ISO 1-5)

CARE INSTRUCTIONS
[Washing symbols: no chlorine bleach, no iron, no dry clean, no tumble dry, no steam, no wring]

LIGHTFASTNESS
5-6

SUSTAINABILITY
GREENGUARD GOLD, HPD, EPD

SEAM SLIPPAGE
WARP: 2.75
WEFT: 2.8

WIDTH AND WEIGHT
+/- 140 CM
+/- 1,090 G/M

MANUFACTURED IN
TURKEY

DESIGNER
VINCENT VAN DUYSSEN



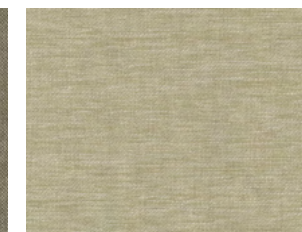
0013



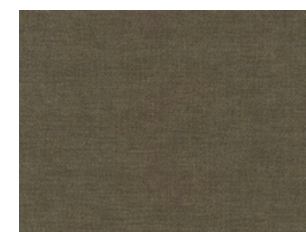
0014



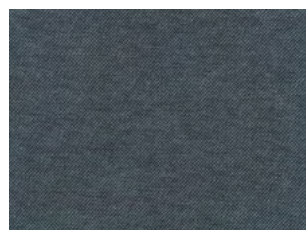
0015



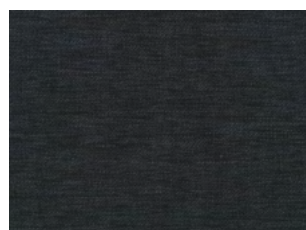
0016



0017



0001



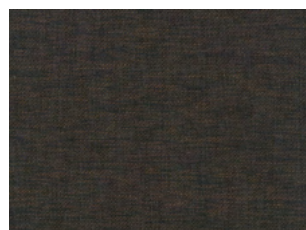
0002



0003



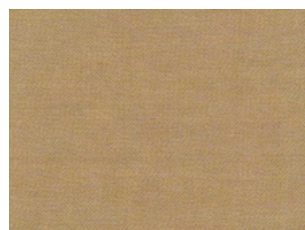
0004



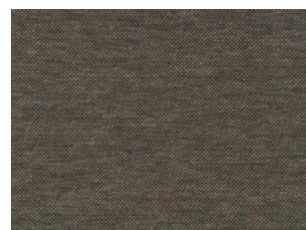
0005



0006



0007



0008



0009



0010



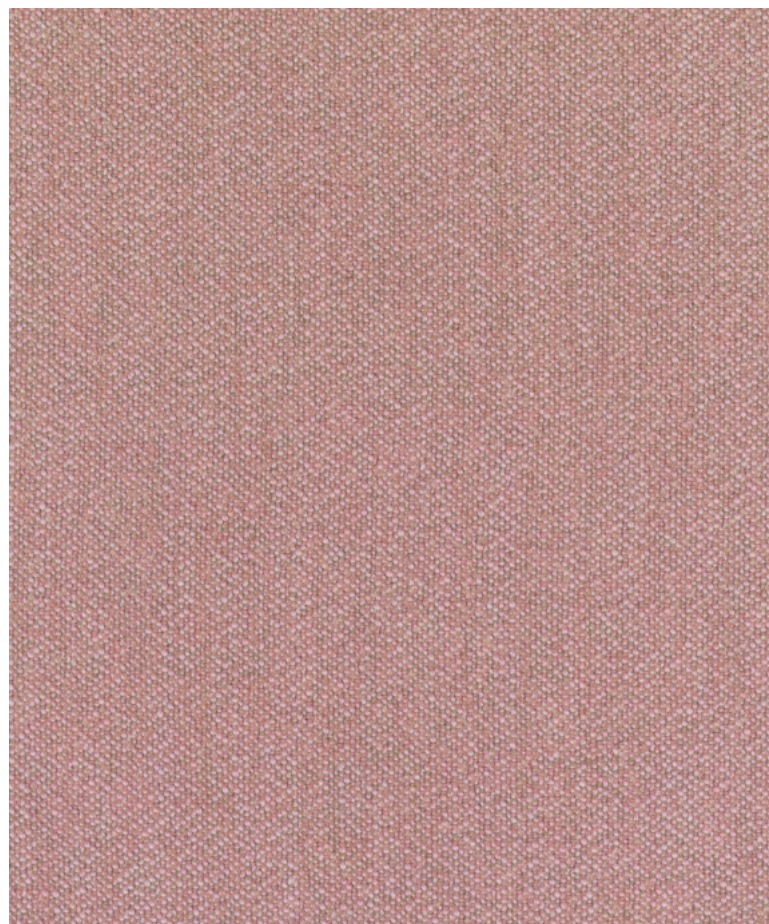
0011



0012

ECRITURE

MATT MELANGE BOUCLÉ



COMPOSITION
40% POLYACRYLIC, 27% POLYESTER,
18% VISCOSE, 9% LINEN, 6% COTTON

MARTINDALE
70.000

PILLING
4-5 (ISO 1-5)

CARE INSTRUCTIONS

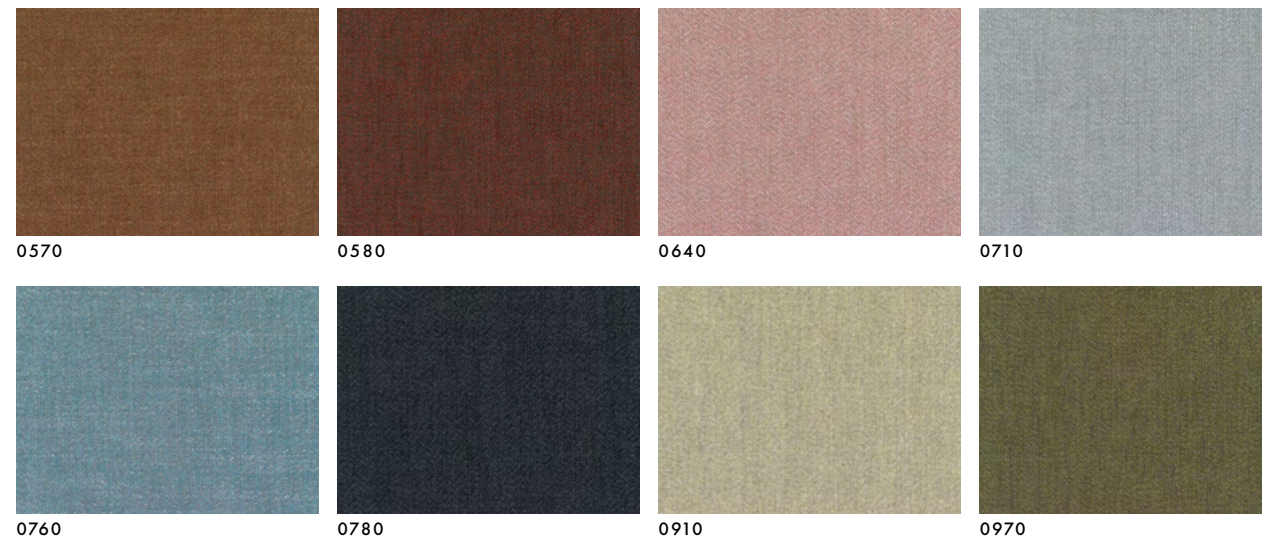
LIGHTFASTNESS
6

SUSTAINABILITY
GREENGUARD CERTIFIED, EPD

SEAM SLIPPAGE
WARP: 2
WEFT: 2

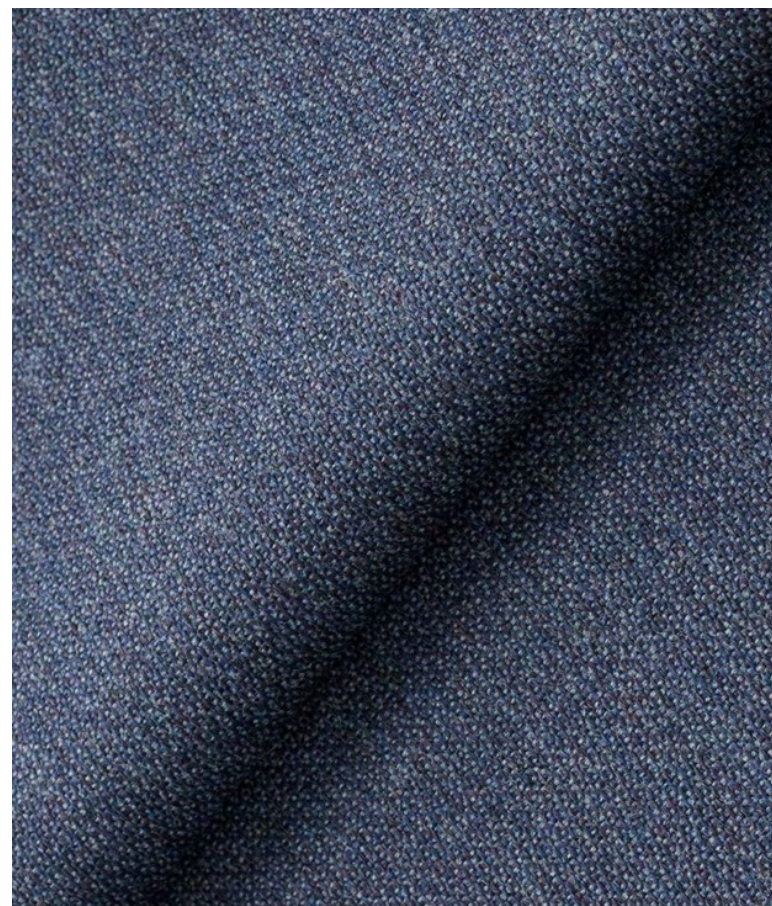
WIDTH AND WEIGHT
+/- 140 CM
+/- 1,040 G/M

MANUFACTURED IN
ITALY



FIORD 2

WOOLEN UPHOLSTERY WITH MELANGE EFFECT



COMPOSITION
92% NEW WOOL (WORSTED), 8% NYLON

MARTINDALE
60.000

PILLING
4-6 (ISO 1-5)

CARE INSTRUCTIONS
☒ ☒ ☒ ☒ Ⓟ

LIGHTFASTNESS
6

SEAM SLIPPAGE
WARP: 4,5
WEFT: 5

WIDTH AND WEIGHT
+/- 140 CM
+/- 500 G/M

SUSTAINABILITY
EU ECOLABEL, GREENGUARD GOLD,
EPD, HPD

MANUFACTURED IN
NORWAY

DESIGNER
LOUISE SIGVARDT



0101 0121 0151 0171

0191 0201 0251 0262

0271 0322 00351 0371



0382 0391 0422 0442

0451 0521 0551 0562

0571 0581 0591 0642

0662 0672 0721 0751

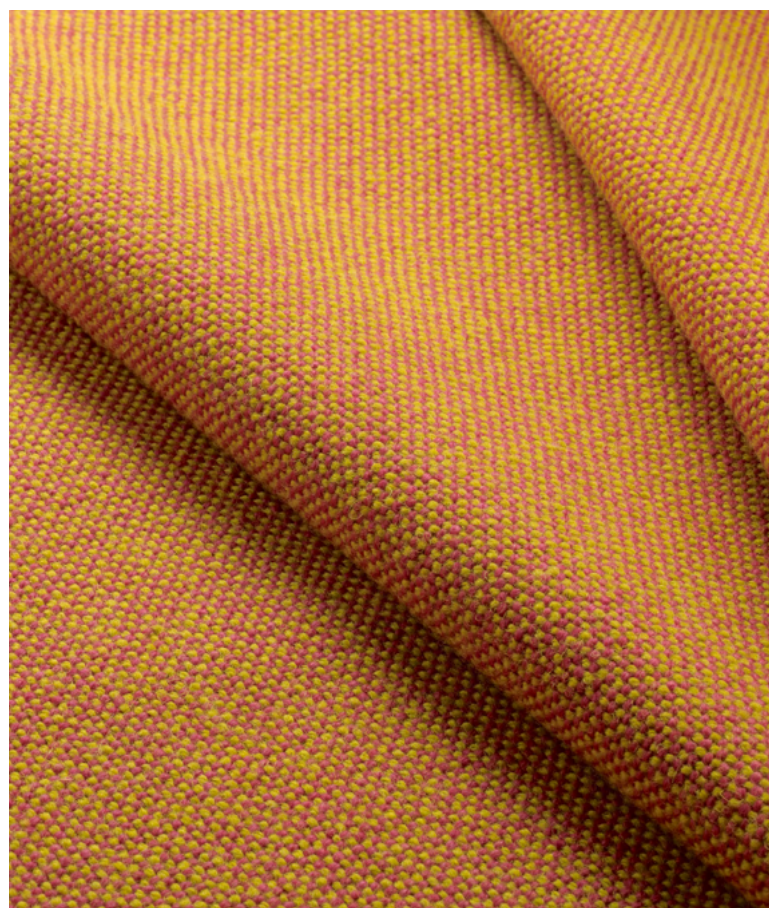
0762 0771 0782 0791

0821 0862 0951 0961

0971 0981 0991

HALLINGDAL 65

A WOOLEN TEXTILE



COMPOSITION
70% NEW WOOL, 30% VISCOSE

MARTINDALE
100.000

PILLING
3-4 (ISO 1-5)

CARE INSTRUCTIONS



LIGHTFASTNESS
7

SEAM SLIPPAGE
WARP: 4,5
WEFT: 4

WIDTH AND WEIGHT
+/- 130 CM
+/- 795 G/M

SUSTAINABILITY
EU ECOLABEL, GREENGUARD GOLD,
EPD, HPD

MANUFACTURED IN
NORWAY

DESIGNER
NANNA DITZEL



0100

0103

0110

0113

0116

0123

0126

0130

0143

0153

0166

0173



0180

0190

0200

0220

0224

0227

0270

0350

0368

0370

0376

0390

0407

0420

0457

0526

0547

0563

0573

0590

0596

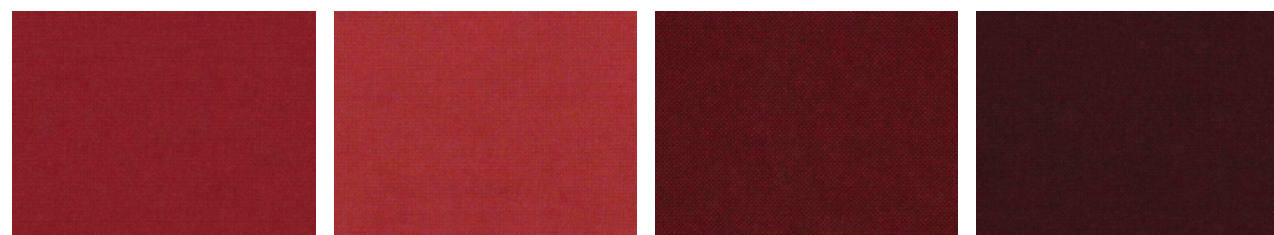
0600

0657

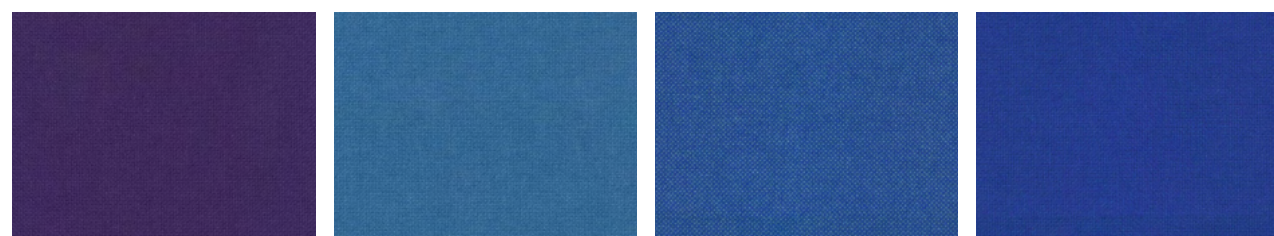
0660

STEELCUT TRIO 3

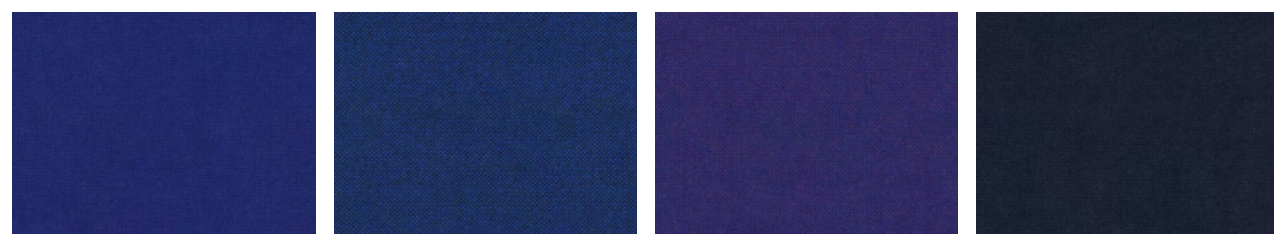
THREE-DIMENSIONAL, WOOLLEN SURFACE



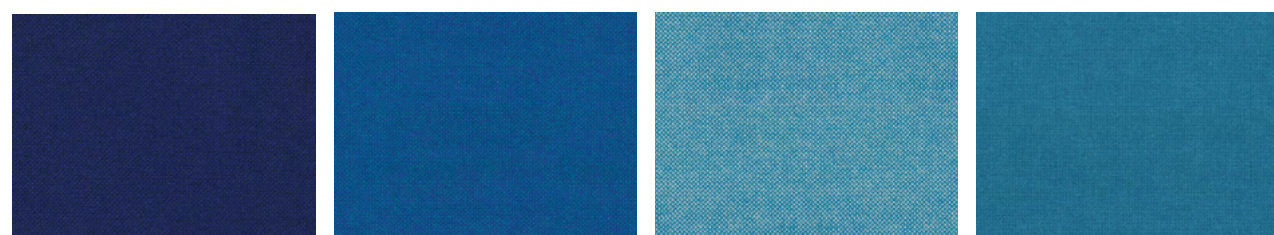
0674 0680 0687 0694



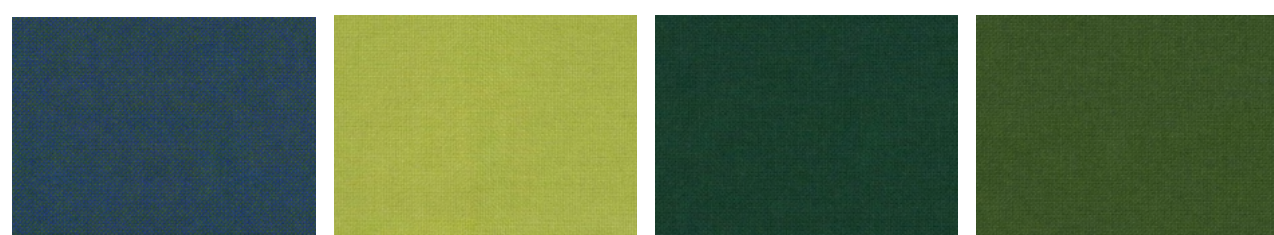
0702 0723 0733 0750



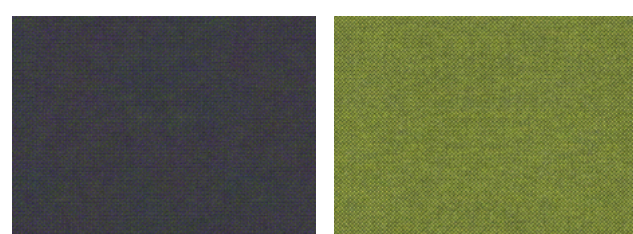
0753 0754 0763 0764



0773 0810 0840 0850



0890 0907 0944 0960



0968 0980



COMPOSITION

90% NEW WOOL (WORSTED), 10% NYLON

MARTINDALE

100.000

PILLING

4 (ISO 1-5)

CARE INSTRUCTIONS



LIGHTFASTNESS

6-7

SEAM SLIPPAGE

WARP: 3,5

WEFT: 2

WIDTH AND WEIGHT

+/- 140 CM

+/- 770 G/M

SUSTAINABILITY

EU ECOLABEL, GREENGUARD GOLD, EPD, HPD

MANUFACTURED IN

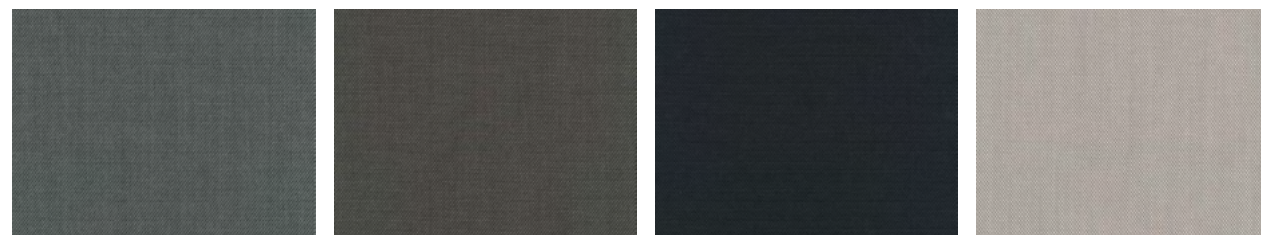
GREAT BRITAIN

DESIGNER

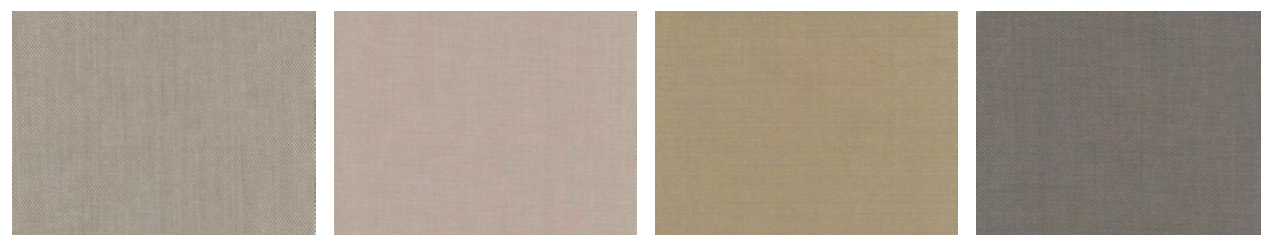
FRANS DIJKMEIJER



0105 0113 0124 0133



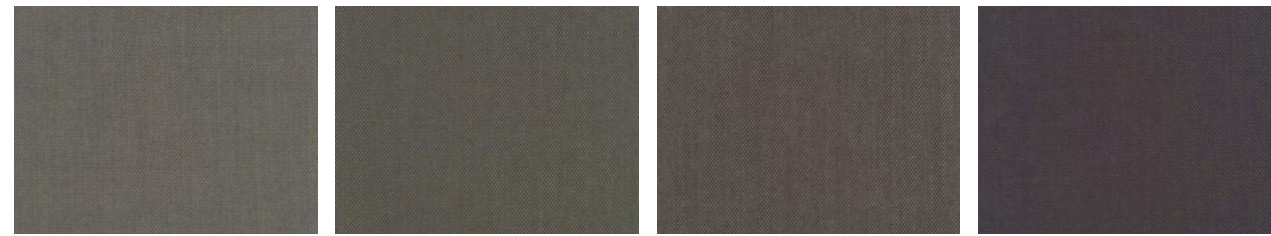
0153 0176 0195 0205



0213 0226 0236 0246

STEELCUT TRIO, KVADRAT

PRICE GROUP 2B

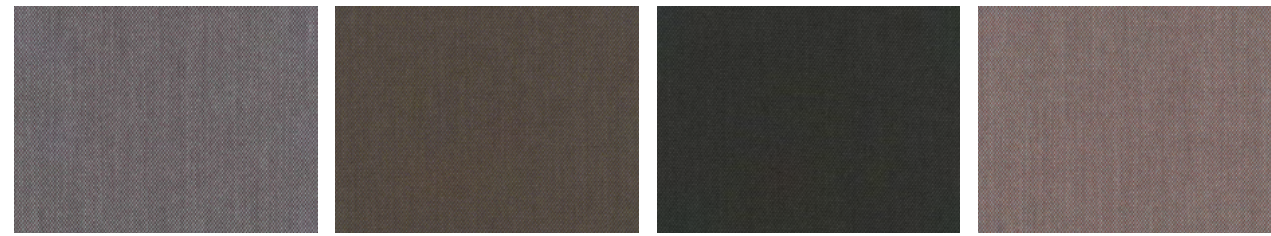


0253

0266

0276

0283

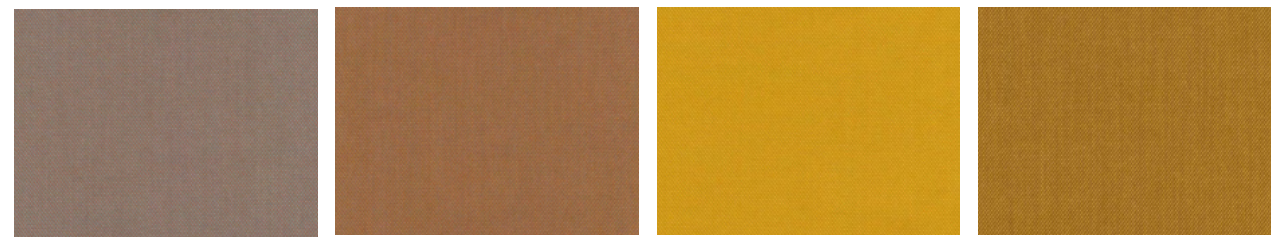


0336

0376

0383

0416

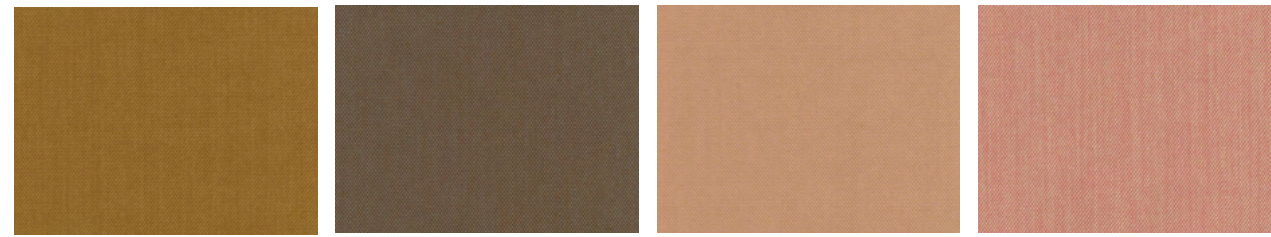


0426

0436

0446

0453

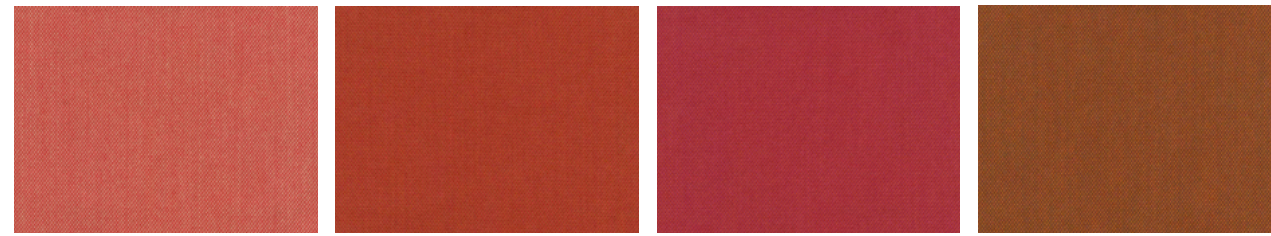


0466

0476

0506

0515

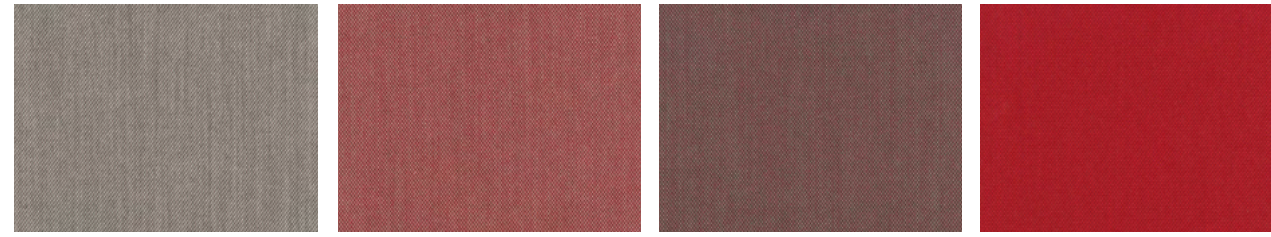


0526

0533

0553

0576



0616

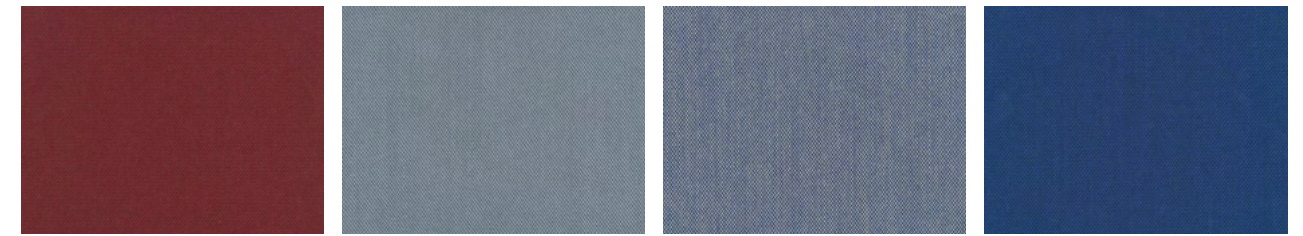
0636

0645

0666

STEELCUT TRIO, KVADRAT

PRICE GROUP 2B

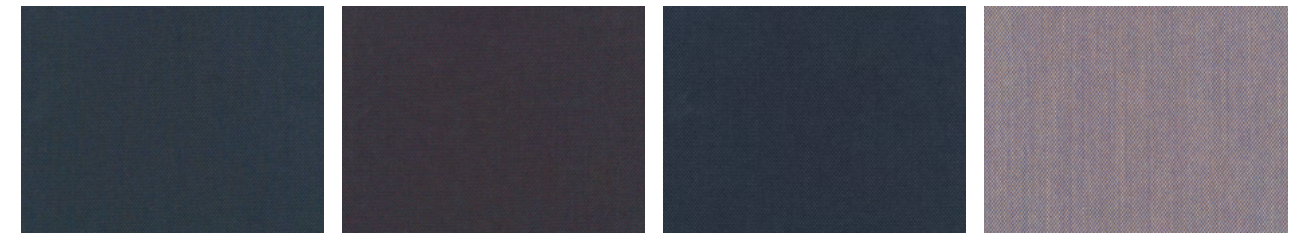


0686

0713

0716

0746

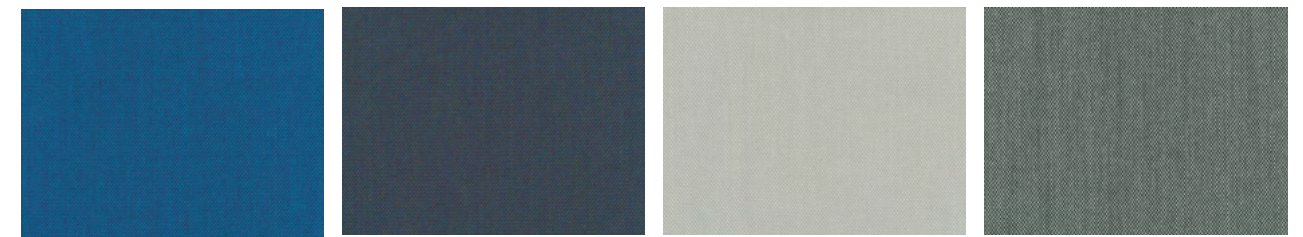


0756

0776

0796

0806

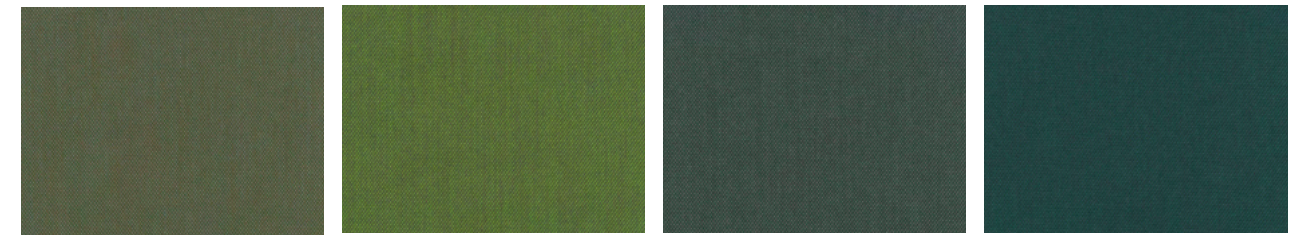


0865

0883

0906

0916

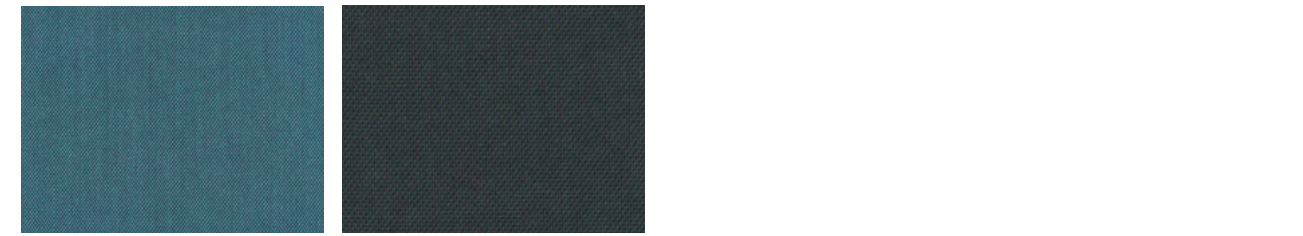


0946

0953

0966

0976



0983

0996

VIDAR 4

TIGHTLY WOVEN FABRIC WITH A GENTLE SATIN SURFACE



COMPOSITION
94% NEW WOOL (WORSTED), 6% NYLON

MARTINDALE
100.000

PILLING
4 (ISO 1-5)

CARE INSTRUCTIONS
☒☒☒☒Ⓟ

LIGHTFASTNESS
7

WIDTH AND WEIGHT
+/- 140 CM
+/- 765 G/M

SUSTAINABILITY
EU ECOLABEL, GREENGUARD GOLD,
EPD, HPD

MANUFACTURED IN
NORWAY

DESIGNER
FANNY ARONSEN / RAF SIMONS



0106

0123

0133

0143

0146

0152

0182

0222

0323

0333

0353

0363



0386

0443

0456

0472

0526

0542

0554

0556

0582

0622

0633

0653

0656

0676

0693

0723

0733

0743

0772

0786

0872

0913

0943

0956

0972

1062

1511

1880

BARNUM

RETRO-INSPIRED BOUCLÉ



COMPOSITION
94% COTTON, 15% WOOL, 13% ACRYLIC,
19% VISCOSE, 8% NYLON

MARTINDALE
60.000

PILLING
4 (ISO 1-5)

CARE INSTRUCTIONS
[Washing symbols: hand wash, gentle cycle, no bleach, no iron, no dry clean]

LIGHTFASTNESS
5

WEIGHT
+/- 680 G/M

SUSTAINABILITY
OEKO-TEX 21CX00014



3A

Textile price group

HARALD 3

CLOSELY-WOVEN, SHORT-PILE VELOUR



COMPOSITION
100% COTTON

MARTINDALE
100.000

PILLING
4-5 (ISO 1-5)

CARE INSTRUCTIONS



LIGHTFASTNESS
4-5

SUSTAINABILITY
GREENGUARD GOLD, HPD, EPD, NATURAL FIBERS

SEAM SLIPPAGE
WARP: 2,5
WEFT: 3

WIDTH AND WEIGHT
+/- 140 CM
+/- 520 G/M

MANUFACTURED IN
ITALY

DESIGNER
FANNY ARONSEN



NARA


TEXTURED, SOFT AND RICH



COMPOSITION
50% LINEN, 35% COTTON, 15% VISCOSE

MARTINDALE
60.000

PILLING
5 (ISO 1-5)

CARE INSTRUCTIONS


LIGHTFASTNESS
5-6 (ISO 1-8)

SUSTAINABILITY
GREENGUARD GOLD, HPD

SEAM SLIPPAGE
WARP: 1, WEFT: 2

WIDTH AND WEIGHT
+/- 140 CM, +/- 1.010 G/M

MANUFACTURED IN
ITALY



SISU

CHECKED, THICK, VOLUMINOUS WOOLLEN TEXTILE



COMPOSITION
91% NEW NORWEGIAN WOOL, 8% NEW ZEALAND WOOL, 1% NYLON

MARTINDALE
70.000

PILLING
3-4 (ISO 1-5)

CARE INSTRUCTIONS


LIGHTFASTNESS
7 (ISO 1-8)

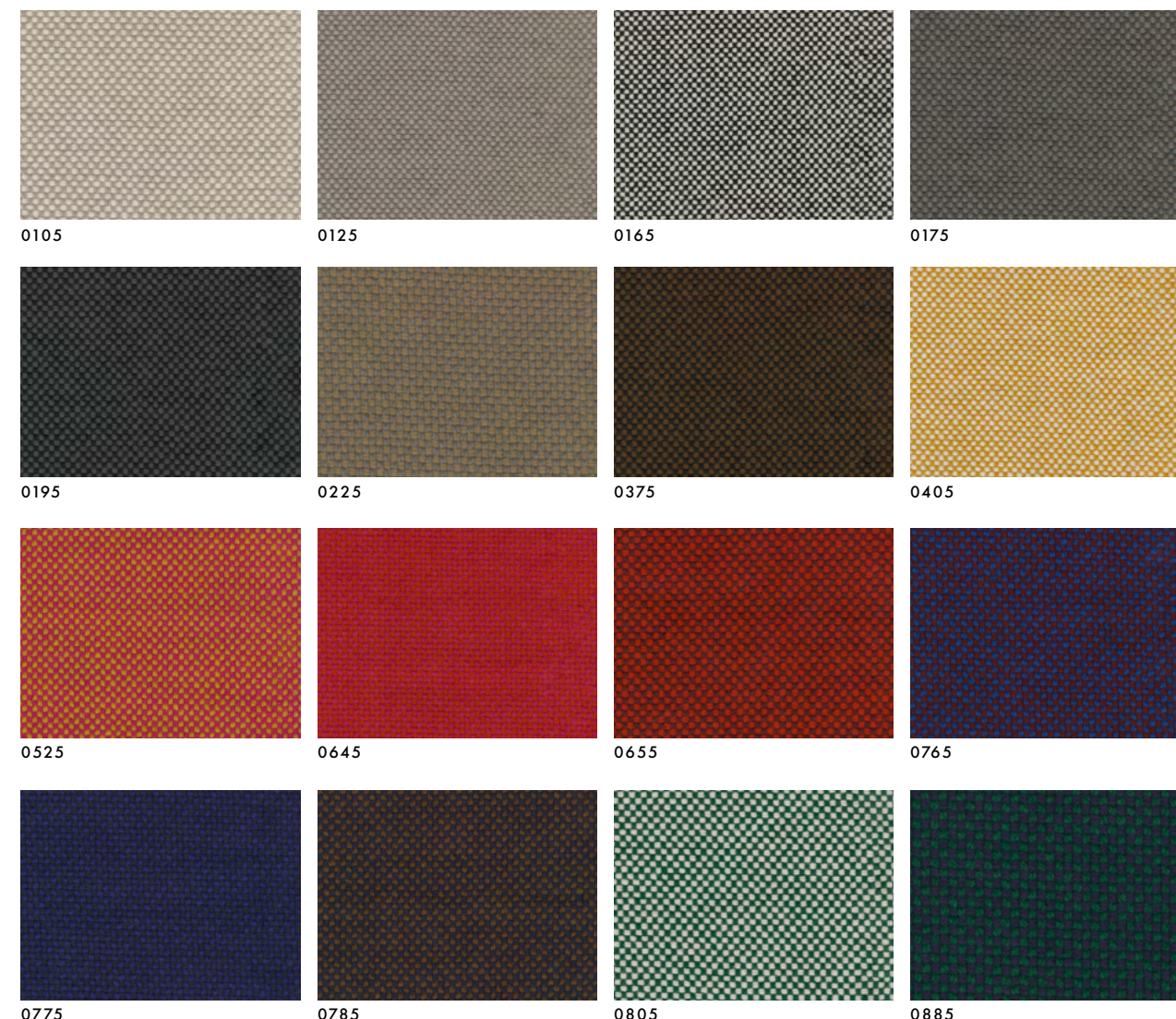
SUSTAINABILITY
GREENGUARD GOLD, HPD, EPD

SEAM SLIPPAGE
WARP: 1,5 , WEFT: 3

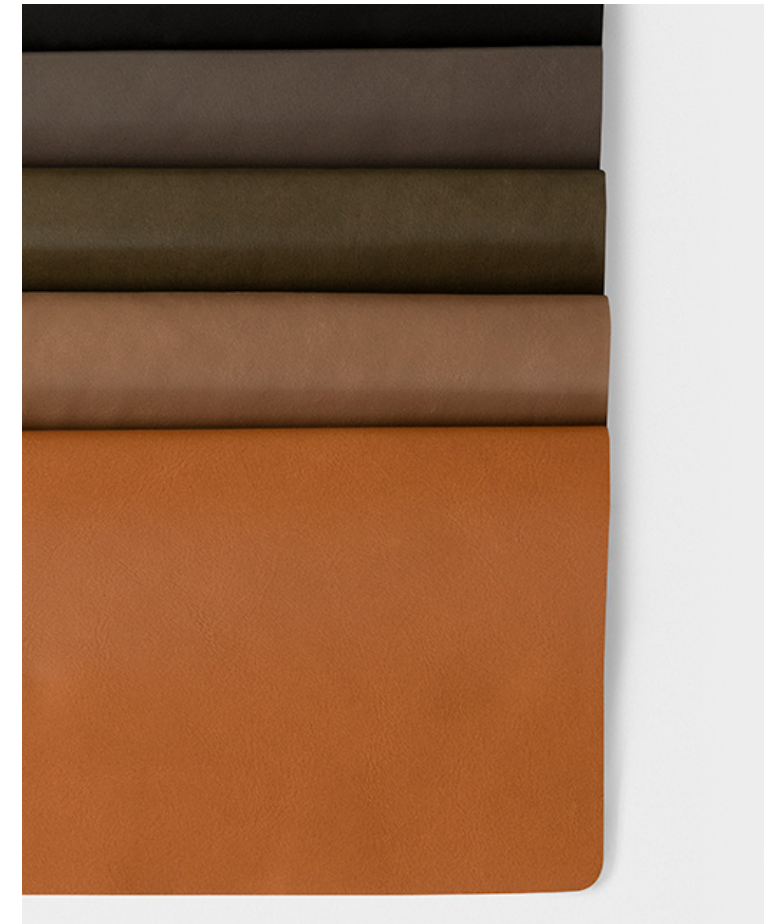
WIDTH AND WEIGHT
+/- 142 CM, +/- 1.010 G/M

MANUFACTURED IN
NORWAY

DESIGNED BY
NANNA DITZEL, DAHN VO



ENVY ELEGANT ANILINE LEATHER



TYPE
ANILINE LEATHER

ORIGIN
EUROPEAN RAWHIDE

SURFACE
NATURAL SURFACE WITH MARKINGS

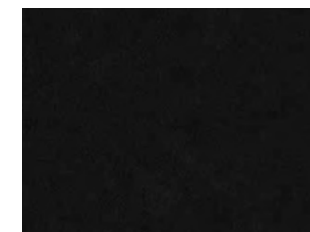
FINISH
WAX WITH A SILKY FEEL

TANNAGE
CHROME

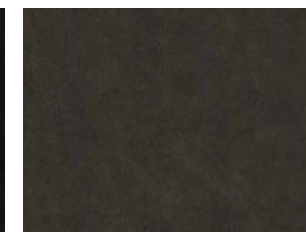
DYE
WATER-BASED ANILINE DYE

THICKNESS
1,0 - 1,2 MM

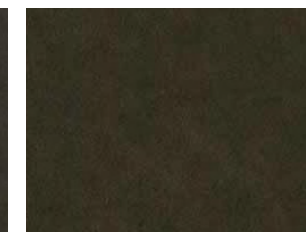
CARE
ONLY VACUUM WITH A SOFT BRUSH
PROTECT FROM DIRECTLY SUNLIGHT



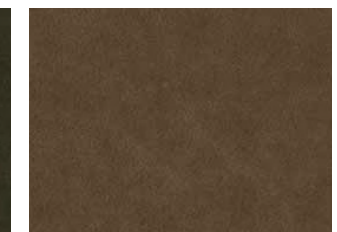
20321 - BLACK



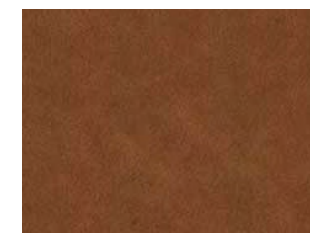
20323 - ANTHRAZITE



20324 - OLIVE



20322 - NOUGAT

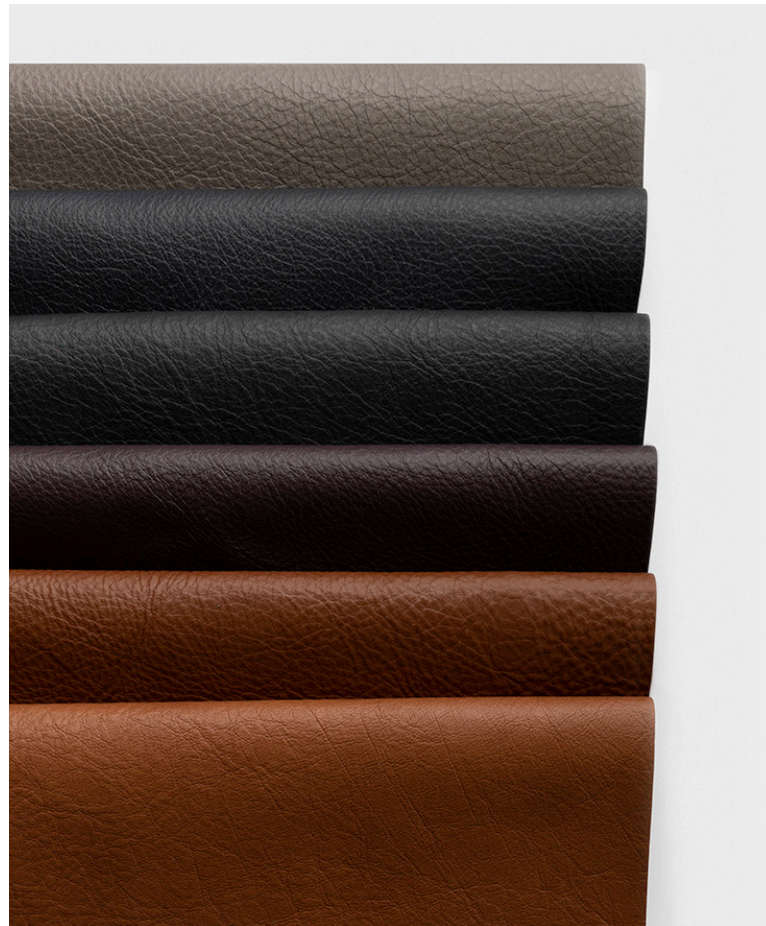


20320 - COGNAC

Leather price group

NUANCE

DURABLE PROTECTED LEATHER



TYPE
PROTECTED LEATHER

ORIGIN
NON-EU

SURFACE
VISIBLE NATURAL MARKINGS AND TWO-TONED TEXTURE

FINISH
SURFACE PROTECTION

TANNAGE
CHROME

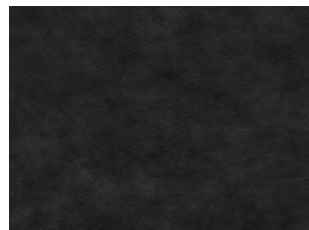
DYE
WATER-BASED ANILINE DYE

THICKNESS
1,2 - 1,4 MM

SPECIFICATIONS
TVOC TESTED. WATER AND DIRT REPELLENT, STAIN RESISTANT

CARE
ONLY VACUUM WITH A SOFT BRUSH
PROTECT FROM DIRECTLY SUNLIGHT

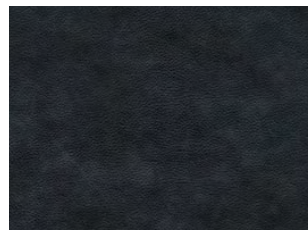
*DEVELOPED IN COLLABORATION WITH
SPACE COPENHAGEN*



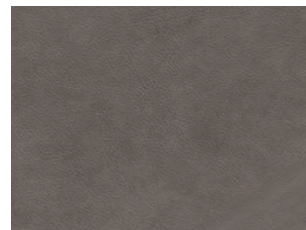
40780 - SHADOW GREY



40784 - EARTHY GREY



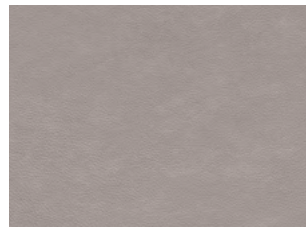
40781 - HEAVENLY GREY



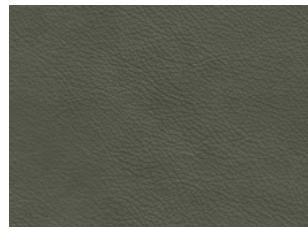
40785 - SMOKED GREY



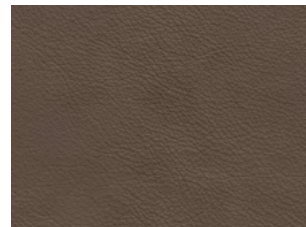
40783 - BURNED GREY



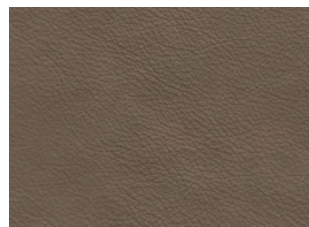
40782 - LIGHT GREY



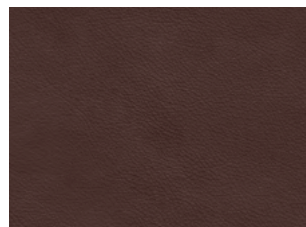
40787 - DARK GREEN



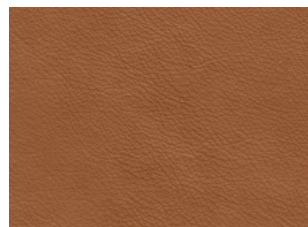
40791 - DARK BROWN



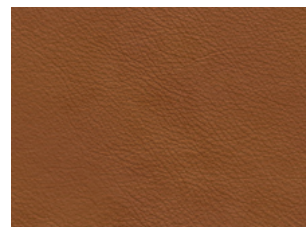
40788 - CINNAMON



40789 - BURGUNDY



40790 - WALNUT

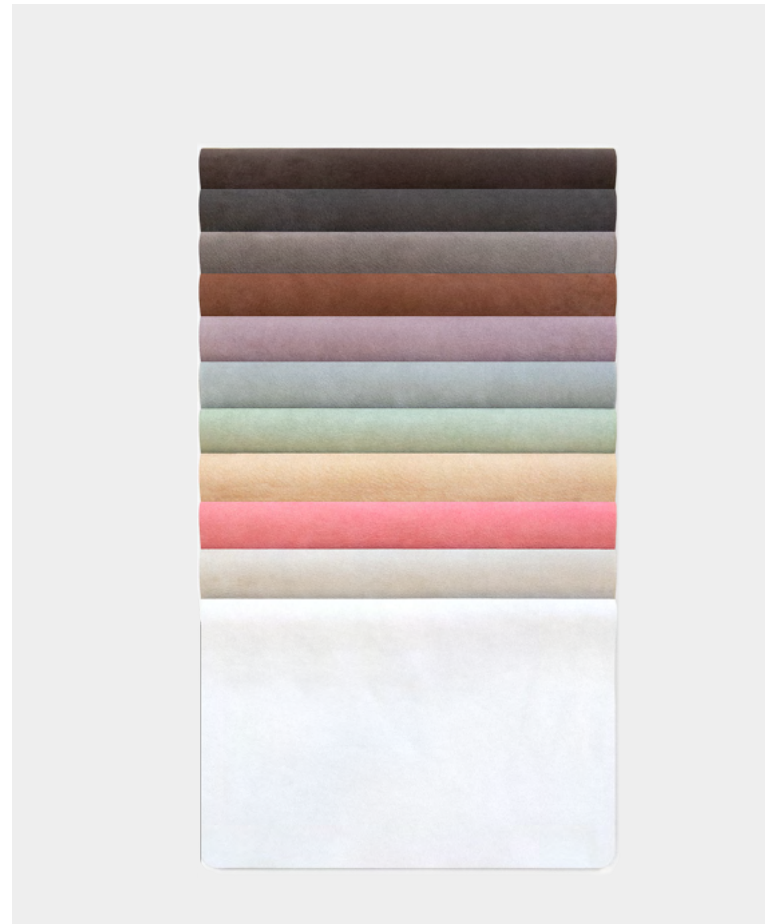


40786 - RUST



Leather price group

DUET DOUBLE-SIDED ANILINE LEATHER



TYPE
ANILINE LEATHER

ORIGIN
EUROPEAN RAWHIDE

SURFACE
SMOOTH GRAIN STRUCTURE OF NUBUCK AND TEXTURED SURFACE OF SUEDE

FINISH
NUBUCK: NATURAL WITH A SCOTCHGUARD® PROTECTION ON THE SURFACE.
SUEDE SIDE: NO FINISH

TANNAGE
CHROME

DYE
WATER-BASED ANILINE DYE

THICKNESS
1,1 - 1,3 MM

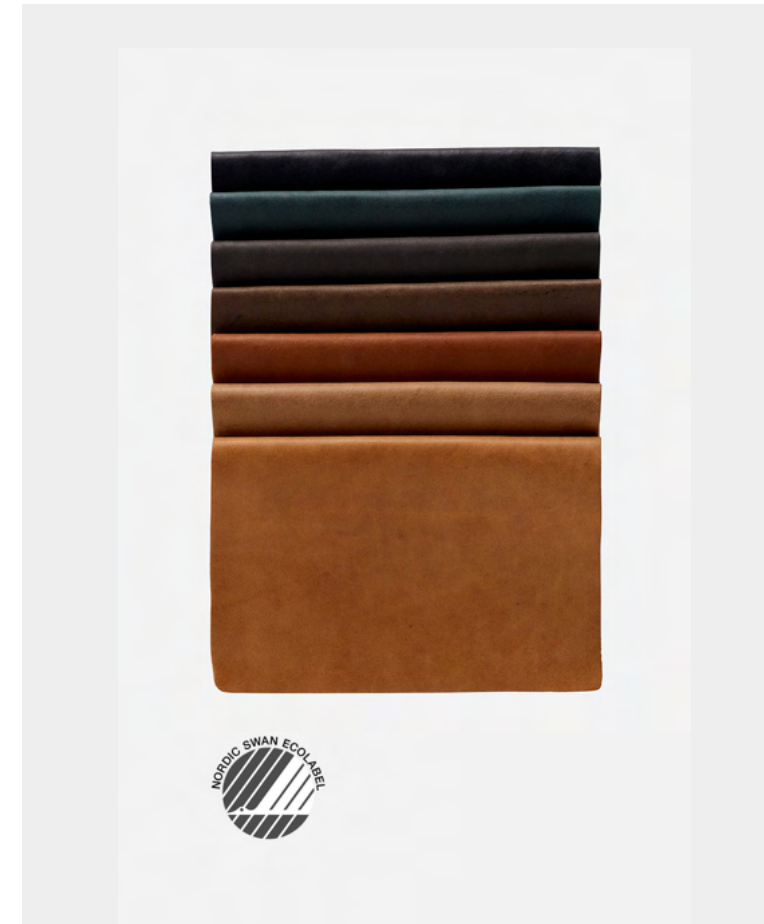
SPECIFICATIONS
TVOC TESTED. WATER AND DIRT REPELLENT, STAIN RESISTANT

CARE
ONLY VACUUM WITH A SOFT BRUSH
PROTECT FROM DIRECTLY SUNLIGHT

DEVELOPED IN COLLABORATION WITH TOM DIXON



DUNES VELVETY ANILINE LEATHER



TYPE
ANILINE LEATHER

ORIGIN
EUROPEAN RAWHIDE

SURFACE
MATT SURFACE WITH A VELVETY FEEL

FINISH
SPECIAL LEATHER OIL

TANNAGE
CHROME-FREE

DYE
WATER-BASED ANILINE DYE

THICKNESS
1,1 - 1,3 MM

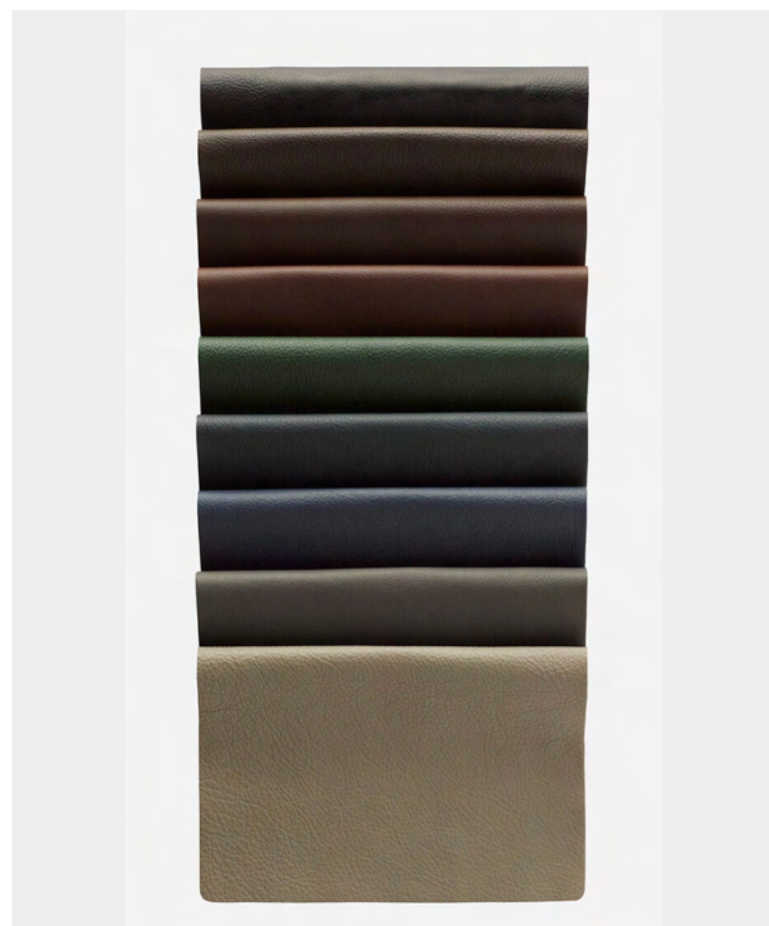
CERTIFICATES
NORDIC SWAN ECOLABEL, EU ECOLABEL

CARE
ONLY VACUUM WITH A SOFT BRUSH
PROTECT FROM DIRECTLY SUNLIGHT



SAVANNE

CLASSIC SEMI-ANILINE LEATHER



TYPE
SEMI-ANILINE LEATHER

ORIGIN
EUROPEAN RAWHIDE

SURFACE
MATT SURFACE WITH VISIBLE TEXTURE

FINISH
LIGHT SURFACE PROTECTION

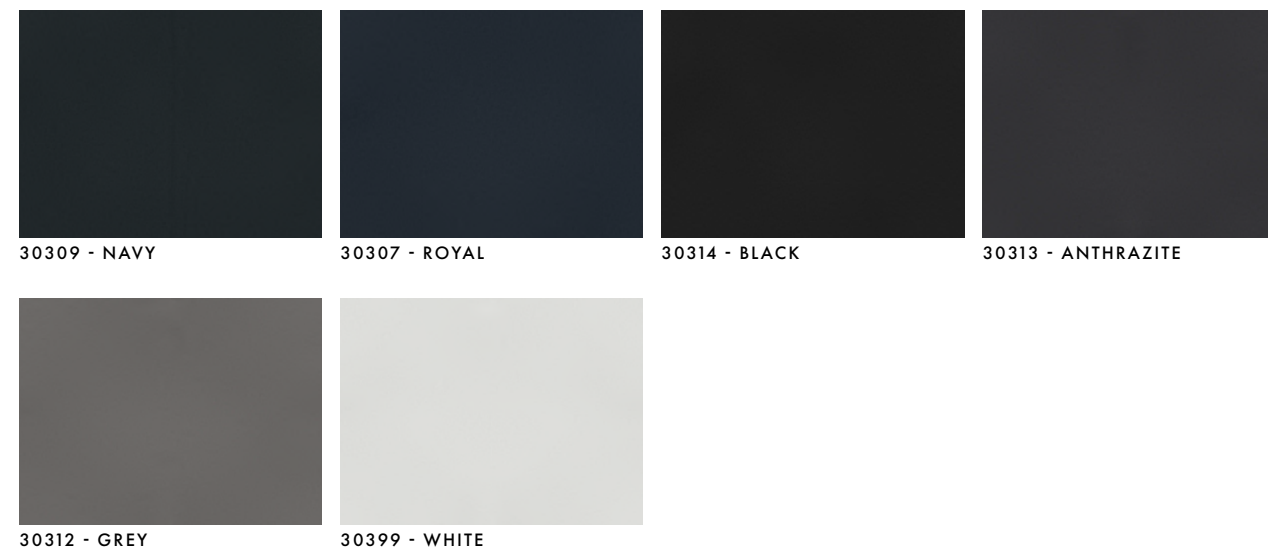
TANNAGE
CHROME

DYE
WATER-BASED ANILINE DYE

THICKNESS
1,0 - 1,2 MM

CERTIFICATE
OEKO-TEX

CARE
VACUUM WITH A SOFT BRUSH
PROTECT FROM DIRECTLY SUNLIGHT



SPECTRUM SEMI-ANILINE AND FULL-GRAIN LEATHER



TYPE
SEMI-ANILINE LEATHER

ORIGIN
EUROPEAN RAWHIDE

SURFACE
MATT, SMOOTH SURFACE WITH VISIBLE TEXTURE

FINISH
LIGHT SURFACE PROTECTION

TANNAGE
CHROME

DYE
WATER-BASED ANILINE DYE

THICKNESS
1,0 - 1,2 MM

CERTIFICATE
OEKO-TEX

CARE
VACUUM WITH A SOFT BRUSH
PROTECT FROM DIRECTLY SUNLIGHT



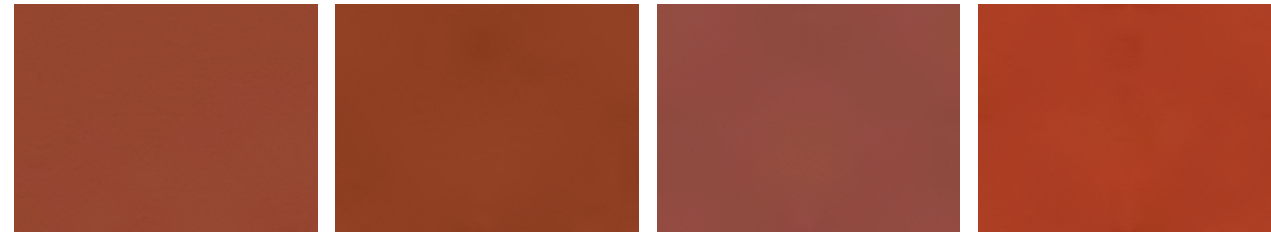


30089 - MANDRAIN

30173 - BURNED ORANGE

30090 - SUNSET

30092 - BURN



30091 - SUMMER

30122 - APRICOT

30172 - RED BROWN

30121 - PAPAYA



30119 - BRICK

30171 - TERRACOTTA

30109 - RUST

30118 - CORAL



30116 - RUBY

30088 - LAVENDER

30117 - WINE RED

30115 - BLACKBERRY



30113 - CHOCOLATE

30112 - COFFEE

30111 - TOBACCO

30086 - MUD

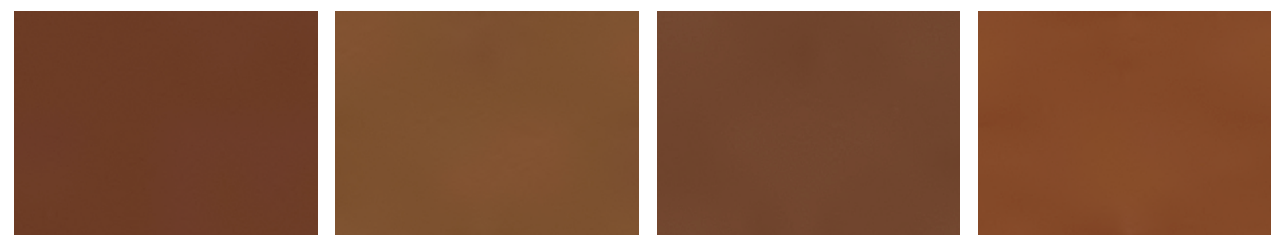


30087 - BROWN

30146 - CINNAMON

30110 - HAVANA

30108 - TAN



30094 - TERRA

30153 - MOCCA

30107 - COGNAC

30155 - BRANDY



30093 - WALNUT

30120 - MANGO

30152 - LIGHT TAN

30145 - SAFARI



30147 - MIX

30149 EARTH

30148 - BARK

30151 - PARCHMENT



30150 - ALMOND

30154 - TOFFEE

30106 - CAMEL

30095 - NOUGAT

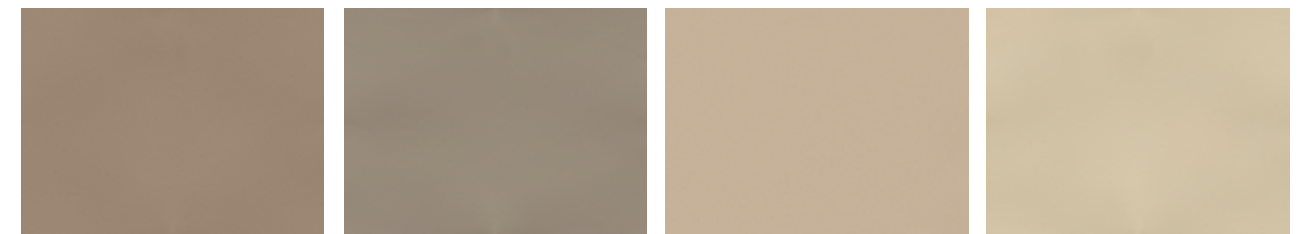


30103 - CORN

30096 - GINGER

30102 - HONEY

30101 - CREAM



30105 - MARBLE

30160 - MINERAL

30076 - SAND

30100 - EGGSHELL



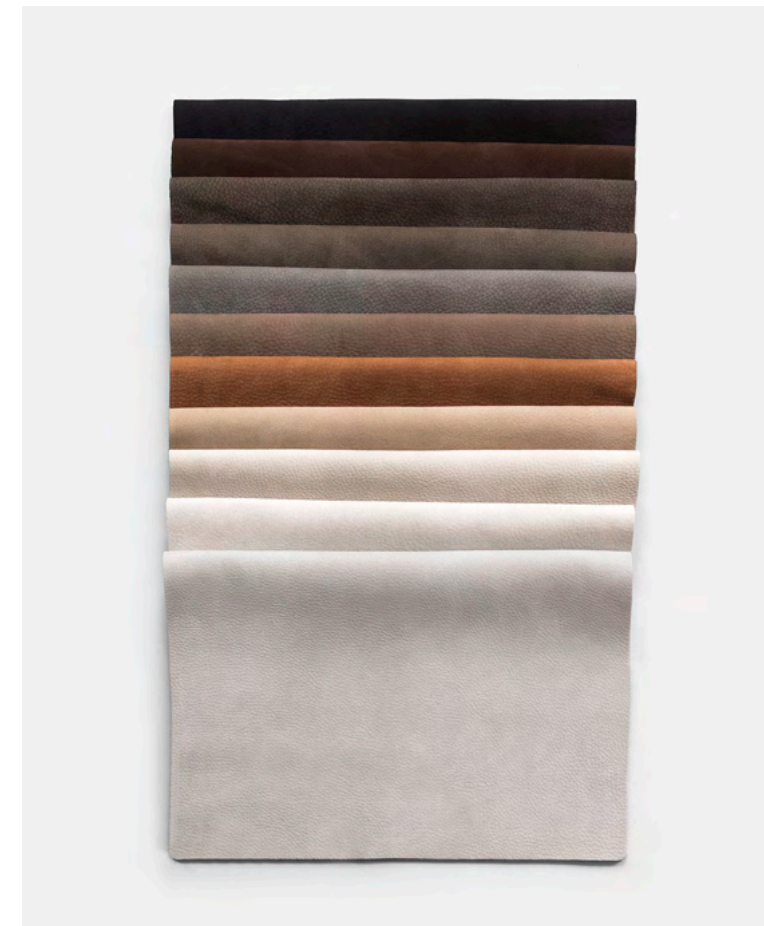
30075 - ICE

30161 - IVORY

30140 - WHITE

ROYAL NUBUCK

HIGH-END ANILINE LEATHER



TYPE
ANILINE LEATHER

ORIGIN
EUROPEAN RAWHIDE

SURFACE
SMOOTH, VELVETY GRAIN STRUCTURE

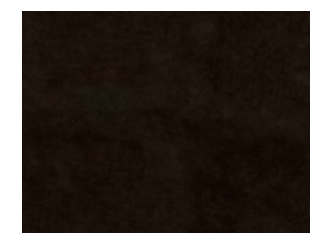
FINISH
SCOTCHGUARD® PROTECTION, INSTANTLY PREVENTING LIQUIDS FROM PENETRATING THE LEATHER AND MAKES THE LEATHER MORE STAIN RESISTANT

TANNAGE
CHROME

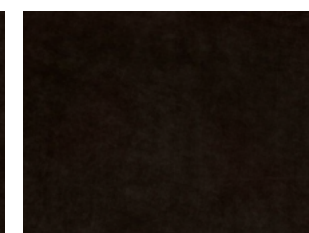
DYE
WATER-BASED ANILINE DYE

THICKNESS
1,4 - 1,6 MM

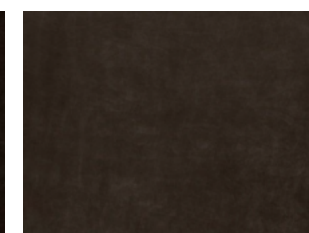
CARE
ONLY VACUUM WITH A SOFT BRUSH
PROTECT FROM DIRECTLY SUNLIGHT



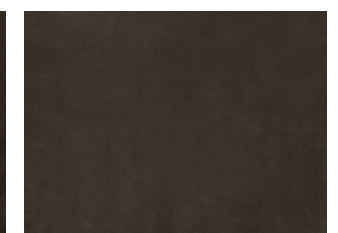
30259 - BLACK



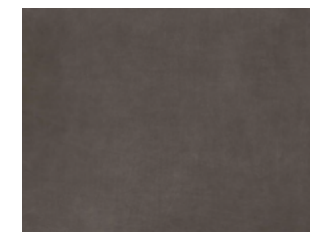
30258 - HAVANNA



30255 - STONE



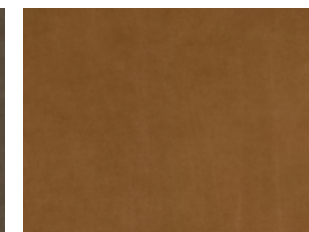
30257 - CINNAMON



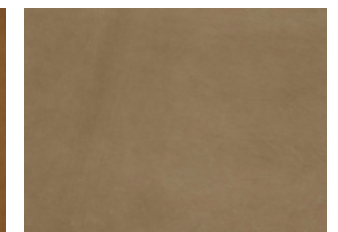
30254 - LAVA



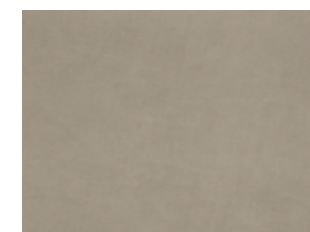
30256 - ALMOND



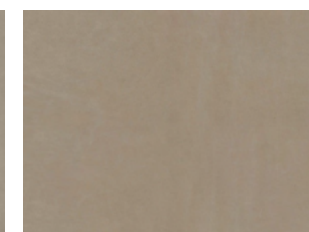
30260 - COGNAC



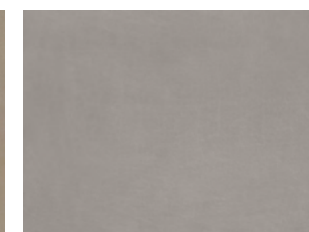
30253 - ECRU



30251 - MINERAL



30252 - OFF-WHITE



30250 - LIGHT GREY

3

Leather price group



WOUD